

OVERFLOW TRAP

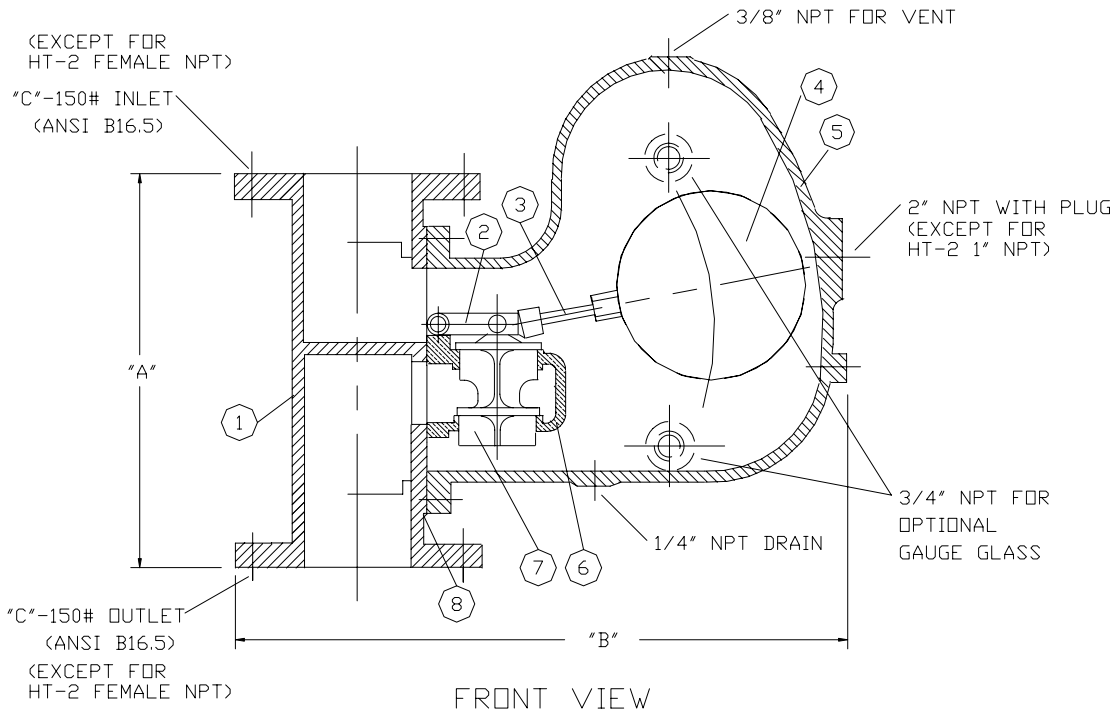
EFFECTIVE DATE: 2/20/04

REPLACES:

NOTES:

1. DIMENSIONS ARE SUBJECT TO CHANGE WITHOUT NOTICE. CONSULT FACTORY FOR CERTIFIED DIMENSIONS.

MATERIALS OF CONSTRUCTION : CARBON STEEL
EXTERNAL SURFACES PAINTED WITH ONE COAT
OF HEAT RESISTANT ALUMINUM PAINT.



ITEM	MAT'L.	DESCRIPTION
8	FR162	3/16" RUBBER GASKET
7	BRASS	VALVE
6	BRASS	VALVE SEAT CASING
5	C.I.	TRAP HOOD
4	304 SS	7" DIA. FLOAT
3	C'STL.	PIPE
2	BRASS	FLOAT LEVER
1	C.I.	TRAP BODY

NOTE -- ITEMS 2, 6, AND 7 MAKE A COMPLETE VALVE ASSEMBLY.

MODELS	DIMENSIONS		
	A	B	C
HT-2	6-3/4"	14-3/4"	2" NPT
HT-3	14-3/4"	21-1/2"	3" FLG
HT-4	14-7/8"	22-1/2"	4" FLG
HT-6	14-3/4"	31-3/4"	6" FLG

B BRYAN STEAM

783 N. CHILI AVE.
PERU, INDIANA 46970

DWG. NO: A50870
FORM NO: 2211