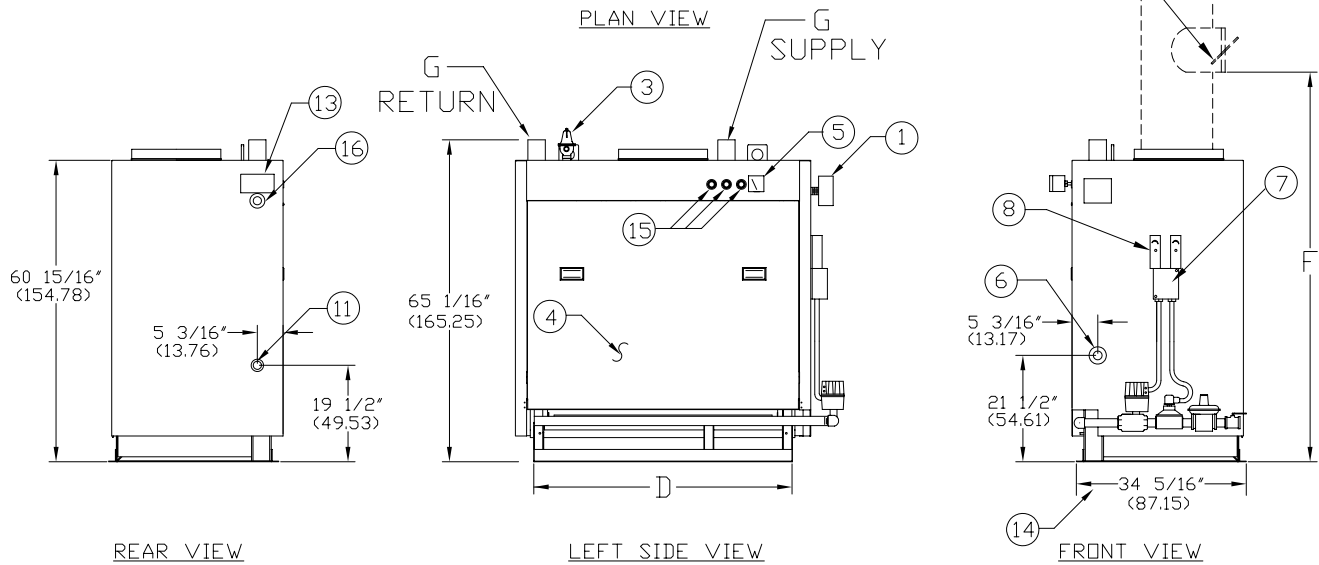
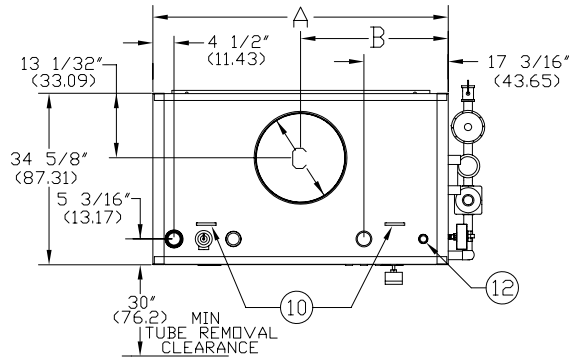


CLM SERIES ATMOSPHERIC GAS
WATER BOILERS (CLM90-CLM300)

EFFECTIVE DATE: 10/2/08
REPLACES: 11/14/06

NOTES:

1. ALL DIMENSIONS ARE IN INCHES. THOSE IN PARENTHESES ARE CENTIMETERS.
2. LOCATION DIMENSIONS ARE ALL $\pm 1/2"$.
3. GAS TRAIN, CONTROL AND BURNER CONFIGURATION WILL VARY DEPENDING ON JOB SPECIFICATIONS & CONDITIONS.
4. DIMENSIONS ARE SUBJECT TO CHANGE WITHOUT NOTICE. CONSULT FACTORY FOR CERTIFIED DIMENSIONS.



- | | | | |
|-------------------------|----------------------------------|-----------------------------|-----------------------------------|
| 1. PROBE TYPE L.W.C.O.- | 6. CLNDOUT./INSP. OPNG-1 1/2"NPT | 11. DRAIN CONNECTION | 16. CLNDOUT./INSP. OPNG-1 1/4"NPT |
| 2. BAROMETRIC DAMPER | 7. ELEC. ENCLOSURE- | 12. 1" (2.54) EXP TANK CONN | |
| 3. RELIEF VALVE | 8. AQUASTATS | 13. ASME NAME PLATE | |
| 4. TUBE ACCESS PANEL | | 14. WIDTH OVER MTG BASE | |
| 5. PRESS/TEMP. GAUGE | 10. LIFTING LUG | 15. CONTROL CONNECTIONS | |

BOILER MODEL	CLM90	CLM120	CLM150	CLM180	CLM210	CLM240	CLM270	CLM300
A-LENGTH OVER JACKET	41 7/16" (105.24)	50 11/16" (128.74)	59 11/16" (151.60)	69 1/8" (175.57)	78 3/8" (199.07)	88" (232.52)	97" (246.38)	106 5/8" (270.82)
B-FLUE LOCATION	20 23/32" (52.62)	25 11/32" (64.37)	29 27/32" (75.80)	34 9/16" (87.78)	39 3/16" (99.53)	44" (111.76)	48 1/2" (123.19)	53 5/16" (135.41)
C-FLUE DIAMETER	14" (35.56)	16" (40.64)	18" (45.72)	20" (50.80)	20" (50.80)	22" (55.88)	22" (55.88)	22" (55.88)
D-LENGTH OVER BASE	33 5/8" (85.40)	42 7/8" (108.90)	52 1/8" (132.39)	61 7/16" (156.05)	70 11/16" (179.54)	80" (203.20)	89 1/4" (226.69)	98 1/2" (250.19)
F-HEIGHT TO BAROMETRIC	70 15/16" (180.17)	72 7/16" (183.98)	72 15/16" (185.25)	73 7/16" (186.52)	73 15/16" (187.79)	74 7/16" (189.06)	74 15/16" (190.33)	75 7/16" (191.60)
G-SUPPLY/RETURN NOZZLE SIZE	3" (7.62)	3" (7.62)	3" (7.62)	3" (7.62)	3" (7.62)	3" (7.62)	3" (7.62)	3" (7.62)



BRYAN BOILERS

783 NORTH CHILI AVE
PERU, INDIANA 46970

ORDER NO.:

ORDER REV. NO.:

FORM NO.: 2130

CLM SERIES ATMOSPHERIC GAS WATER BOILERS

BOILER MODEL		CLM90	CLM120	CLM150	CLM180	CLM210	CLM240	CLM270	CLM300
INPUT	MBH	900	1,200	1,500	1,800	2,100	2,400	2,700	3,000
	(KW)	263.7	351.6	439.5	527.4	615.3	703.2	791.1	879.0
OUTPUT*	MBH	720	960	1,200	1,440	1,680	1,920	2,160	2,400
	(KW)	211.0	281.3	351.6	421.9	492.2	562.6	632.9	703.2
BOILER HORSEPOWER	HP	21	29	36	43	50	57	64	72
	(KW)	206	284	353	421	490	559	627	706
TUBE DIAMETER	INCHES	1.00	1.00	1.00	1.00	1.00	1.00	1.00	1.00
	(CM)	2.54	2.54	2.54	2.54	2.54	2.54	2.54	2.54
NUMBER OF TUBES		27	36	45	54	63	72	81	90
PRESSURE VESSEL									
VOLUME	GAL	30	38	47	55	63	71	80	88
	(L)	113.6	143.8	177.9	208.2	238.5	268.7	302.8	333.1
HEATING SURFACE	SQ FT	110	145	180	215	251	287	322	360
	(SQ M)	10.2	13.5	16.7	20.0	23.3	26.7	29.9	33.5
OPERATING WEIGHT	LBS	1,885	2,300	2,710	3,125	3,535	3,950	4,610	5,175
	(KG)	855.0	1,043.3	1,229.3	1,417.5	1,603.5	1,791.7	2,091.1	2,347.4
SHIPPING WEIGHT	LBS	1,425	1,550	1,875	2,075	2,475	2,800	3,000	3,825
	(KG)	646.4	703.1	850.5	941.2	1,122.7	1,270.1	1,360.8	1,735.0

* Output based on nominal 80% of input. Actual combustion efficiencies may vary.