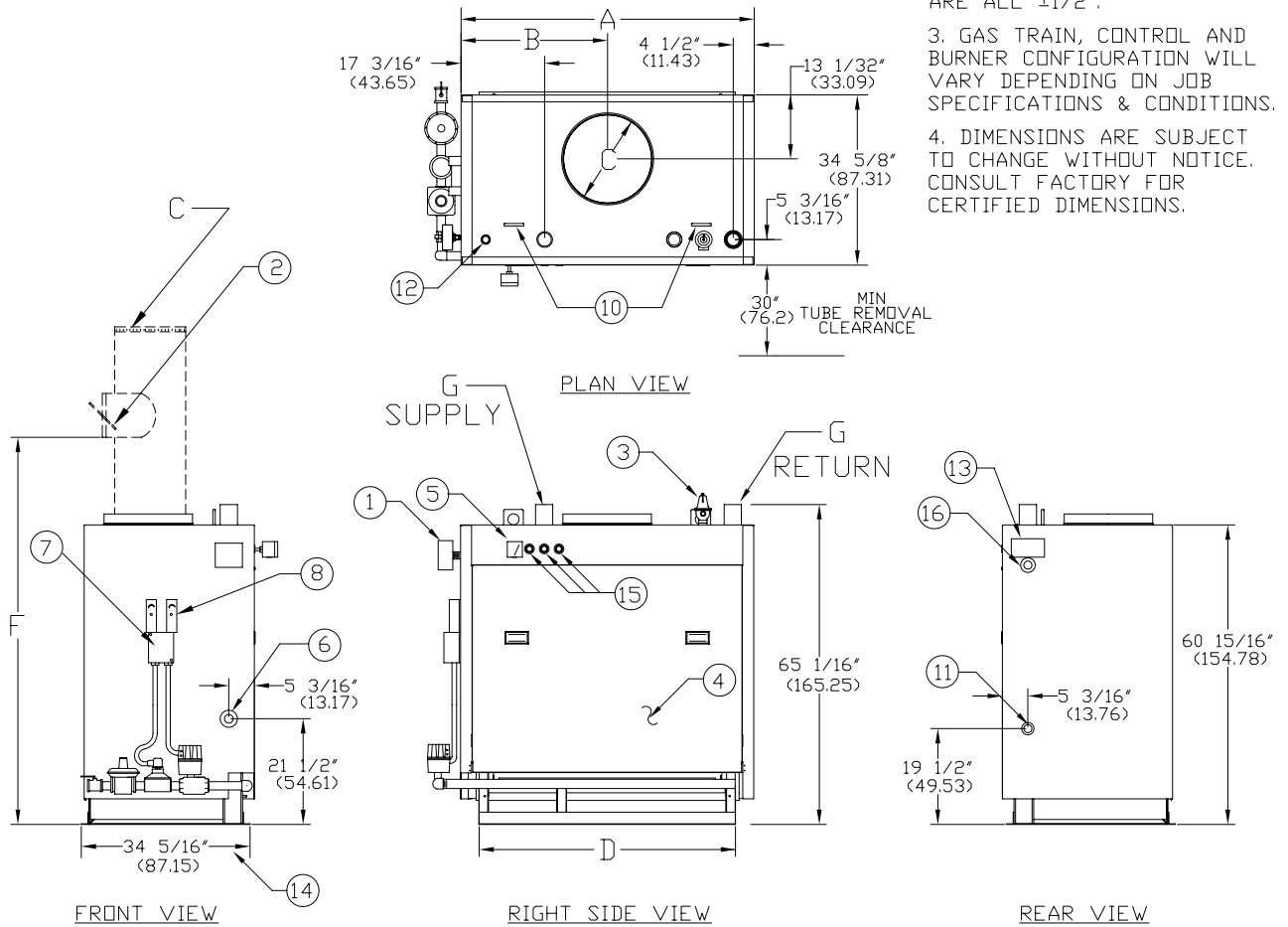


CLM SERIES ATMOSPHERIC GAS
WATER BOILERS (CLM90-CLM300) REVERSE CONSTRUCTION

EFFECTIVE DATE: 10/02/08
REPLACES: 11/17/06

NOTES:

1. ALL DIMENSIONS ARE IN INCHES. THOSE IN PARENTHESES ARE CENTIMETERS.
2. LOCATION DIMENSIONS ARE ALL $\pm 1/2"$.
3. GAS TRAIN, CONTROL AND BURNER CONFIGURATION WILL VARY DEPENDING ON JOB SPECIFICATIONS & CONDITIONS.
4. DIMENSIONS ARE SUBJECT TO CHANGE WITHOUT NOTICE. CONSULT FACTORY FOR CERTIFIED DIMENSIONS.



- | | | | |
|-------------------------|----------------------------------|-----------------------------|-----------------------------------|
| 1. PROBE TYPE L.W.C.O.- | 6. CLNDOUT./INSP. OPNG-1 1/2"NPT | 11. DRAIN CONNECTION | 16. CLNDOUT./INSP. OPNG-1 1/4"NPT |
| 2. BAROMETRIC DAMPER | 7. ELEC. ENCLOSURE- | 12. 1" (2.54) EXP TANK CONN | |
| 3. RELIEF VALVE | 8. AQUASTATS | 13. ASME NAME PLATE | |
| 4. TUBE ACCESS PANEL | 10. LIFTING LUG | 14. WIDTH OVER MTG BASE | |
| 5. PRESS/TEMP. GAUGE | | 15. CONTROL CONNECTIONS | |

| BOILER MODEL | CLM90 | CLM120 | CLM150 | CLM180 | CLM210 | CLM240 | CLM270 | CLM300 |
|-----------------------------|--------------------|--------------------|--------------------|-------------------|--------------------|-------------------|--------------------|-------------------|
| A-LENGTH OVER JACKET | 41 7/16" (105.24) | 50 11/16" (128.74) | 59 11/16" (151.60) | 69 1/8" (175.57) | 78 3/8" (199.07) | 88" (232.52) | 97" (270.82) | 106 5/8" (270.82) |
| B-FLUE LOCATION | 20 23/32" (52.62) | 25 11/32" (64.37) | 29 27/32" (75.80) | 34 9/16" (87.78) | 39 3/16" (99.53) | 44" (111.76) | 48 1/2" (123.19) | 53 5/16" (135.41) |
| C-FLUE DIAMETER | 14" (35.56) | 16" (40.64) | 18" (45.72) | 20" (50.80) | 20" (50.80) | 22" (55.88) | 22" (55.88) | 22" (55.88) |
| D-LENGTH OVER BASE | 33 5/8" (85.40) | 42 7/8" (108.90) | 52 1/8" (132.39) | 61 7/16" (156.05) | 70 11/16" (179.54) | 80" (203.20) | 89 1/4" (226.69) | 98 1/2" (250.19) |
| F-HEIGHT TO BAROMETRIC | 70 15/16" (180.17) | 72 7/16" (183.98) | 72 15/16" (185.25) | 73 7/16" (186.52) | 73 15/16" (187.79) | 74 7/16" (189.06) | 74 15/16" (190.33) | 75 7/16" (191.60) |
| G-SUPPLY/RETURN NOZZLE SIZE | 3" (7.62) | 3" (7.62) | 3" (7.62) | 3" (7.62) | 3" (7.62) | 3" (7.62) | 3" (7.62) | 3" (7.62) |



BRYAN BOILERS

783 NORTH CHILI AVE
PERU, INDIANA 46970

ORDER NO.:

ORDER REV. NO.:

FORM NO.: 2151

CLM SERIES ATMOSPHERIC GAS WATER BOILERS REVERSE CONSTRUCTION

| BOILER MODEL | | CLM90 | CLM120 | CLM150 | CLM180 | CLM210 | CLM240 | CLM270 | CLM300 |
|-------------------|--------|-------|---------|---------|---------|---------|---------|---------|---------|
| INPUT | MBH | 900 | 1,200 | 1,500 | 1,800 | 2,100 | 2,400 | 2,700 | 3,000 |
| | (KW) | 263.7 | 351.6 | 439.5 | 527.4 | 615.3 | 703.2 | 791.1 | 879.0 |
| OUTPUT* | MBH | 720 | 960 | 1,200 | 1,440 | 1,680 | 1,920 | 2,160 | 2,400 |
| | (KW) | 211.0 | 281.3 | 351.6 | 421.9 | 492.2 | 562.6 | 632.9 | 703.2 |
| BOILER HORSEPOWER | HP | 21 | 29 | 36 | 43 | 50 | 57 | 64 | 72 |
| | (KW) | 206 | 284 | 353 | 421 | 490 | 559 | 627 | 706 |
| TUBE DIAMETER | INCHES | 1.00 | 1.00 | 1.00 | 1.00 | 1.00 | 1.00 | 1.00 | 1.00 |
| | (CM) | 2.54 | 2.54 | 2.54 | 2.54 | 2.54 | 2.54 | 2.54 | 2.54 |
| NUMBER OF TUBES | | 27 | 36 | 45 | 54 | 63 | 72 | 81 | 90 |
| PRESSURE VESSEL | | | | | | | | | |
| VOLUME | GAL | 30 | 38 | 47 | 55 | 63 | 71 | 80 | 88 |
| | (L) | 113.6 | 143.8 | 177.9 | 208.2 | 238.5 | 268.7 | 302.8 | 333.1 |
| HEATING SURFACE | SQ FT | 110 | 145 | 180 | 215 | 251 | 287 | 322 | 360 |
| | (SQ M) | 10.2 | 13.5 | 16.7 | 20.0 | 23.3 | 26.7 | 29.9 | 33.5 |
| OPERATING WEIGHT | LBS | 1,885 | 2,300 | 2,710 | 3,125 | 3,535 | 3,950 | 4,610 | 5,175 |
| | (KG) | 855.0 | 1,043.3 | 1,229.3 | 1,417.5 | 1,603.5 | 1,791.7 | 2,091.1 | 2,347.4 |
| SHIPPING WEIGHT | LBS | 1,425 | 1,550 | 1,875 | 2,075 | 2,475 | 2,800 | 3,000 | 3,825 |
| | (KG) | 646.4 | 703.1 | 850.5 | 941.2 | 1,122.7 | 1,270.1 | 1,360.8 | 1,735.0 |

* Output based on nominal 80% of input. Actual combustion efficiencies may vary.