

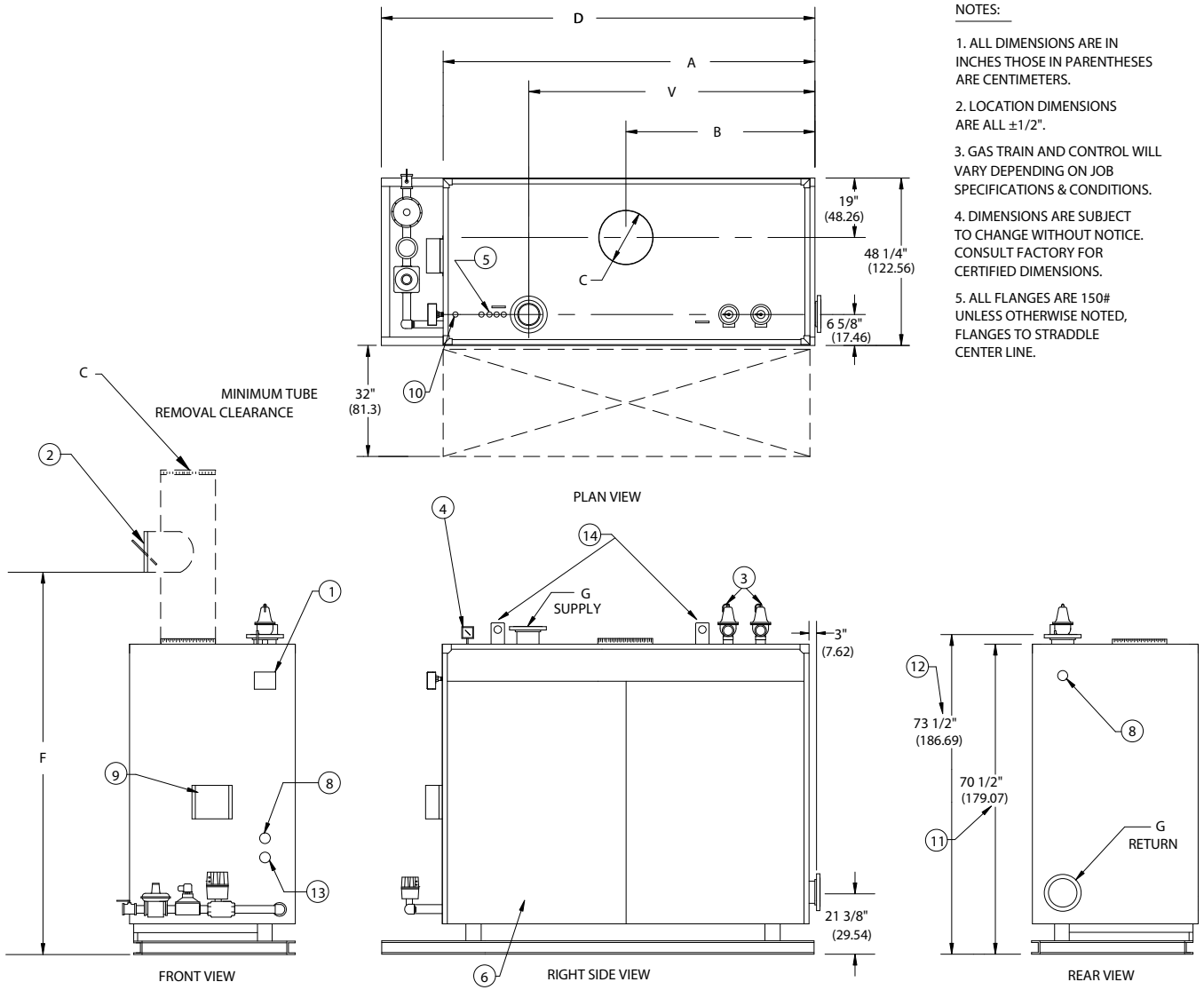
**K SERIES ATMOSPHERIC GAS
WATER BOILERS (K350-K650) REVERSE CONSTRUCTION**

EFFECTIVE DATE: 8/18/03

REPLACES:

NOTES:

1. ALL DIMENSIONS ARE IN INCHES THOSE IN PARENTHESES ARE CENTIMETERS.
2. LOCATION DIMENSIONS ARE ALL ±1/2".
3. GAS TRAIN AND CONTROL WILL VARY DEPENDING ON JOB SPECIFICATIONS & CONDITIONS.
4. DIMENSIONS ARE SUBJECT TO CHANGE WITHOUT NOTICE. CONSULT FACTORY FOR CERTIFIED DIMENSIONS.
5. ALL FLANGES ARE 150# UNLESS OTHERWISE NOTED, FLANGES TO STRADDLE CENTER LINE.



| | | | |
|-------------------------------|----------------------------------|-----------------------------|-----|
| 1. PROBE TYPE L.W.C.O.- | 6. JACKET ACCESS PANELS | 11. HEIGHT OVER JACKET | 16. |
| 2. BARO DRAFT CONTROL (LOOSE) | 7. | 12. HEIGHT OVER SUPPLY | 17. |
| 3. RELIEF VALVE'S | 8. CLNOUT./INSP. OPNG.-1 1/2"NPT | 13. DRAIN CONNECTION 2" NPT | 18. |
| 4. PRESS./TEMP. GAUGE | 9. ELEC. ENCLOSURE- | 14. LIFTING LUGS | 19. |
| 5. CONTROL TAPPINGS 3/4" NPT | 10. VENT CONNECTION 1" NPT | 15. | 20. |

| BOILER MODEL | K350 | K400 | K450 | K500 | K550 | K600 | K650 |
|-----------------------------|----------------------|---------------------|----------------------|----------------------|----------------------|----------------------|----------------------|
| A-LENGTH OVER JACKET | 107 1/4" (272.42) | 117" (297.13) | 129 3/4" (329.57) | 142 1/2" (361.95) | 155 1/2" (394.97) | 165" (419.10) | 178" (452.12) |
| B-FLUE LOCATION | 54 1/8" (137.48) | 59" (149.86) | 65 3/8" (166.05) | 71 3/4" (182.25) | 78 1/4" (198.76) | 83" (210.82) | 89 1/2" (227.33) |
| C-FLUE DIAMETER | 24" (60.96) | 24" (60.96) | 26" (66.04) | 28" (71.12) | 30" (76.2) | 30" (76.2) | 30" (76.2) |
| D-LENGTH OVER BASE | 123 1/4" (313.06) | 133" (337.82) | 145 3/4" (370.21) | 158 1/2" (402.59) | 171 1/2" (435.61) | 181" (459.74) | 194" (492.76) |
| F-HEIGHT TO BAROMETRIC | 97 1/2" (247.65) | 97 1/2" (247.65) | 99 1/2" (252.73) | 101 1/2" (257.81) | 103 1/2" (262.89) | 103 1/2" (262.89) | 103 1/2" (262.89) |
| G-SUPPLY-RETURN NOZZLE SIZE | 4" FLG (10.2) | 6" FLG (15.24) | 6" FLG (15.24) | 6" FLG (15.24) | 6" FLG (15.24) | 6" FLG (15.24) | 6" FLG (15.24) |
| V-SUPPLY NOZZLE LOCATION | 75 3/4" (192.41) | 85 1/2" (217.17) | 98 1/4" (249.56) | 111" (281.94) | 124" (314.96) | 133 1/2" (339.09) | 146 1/2" (372.11) |



783 NORTH CHILI AVE
PERU, INDIANA 46970

ORDER NO.: _____
 ORDER REV. NO.: _____
 FORM NO.: 2170

K SERIES ATMOSPHERIC GAS WATER BOILERS REVERSE CONSTRUCTION

| BOILER MODEL | | K350 | K400 | K450 | K500 | K550 | K600 | K650 |
|--|--------|-------------|-------------|-------------|-------------|-------------|-------------|-------------|
| INPUT | MBH | 3,500 | 4,000 | 4,500 | 5,000 | 5,500 | 6,000 | 6,500 |
| | (KW) | 1,025.5 | 1,172.0 | 1,318.5 | 1,465.0 | 1,611.5 | 1,758.0 | 1,904.5 |
| OUTPUT* | MBH | 2,800 | 3,200 | 3,600 | 4,000 | 4,400 | 4,800 | 5,200 |
| | (KW) | 820.4 | 937.6 | 1,054.8 | 1,172.0 | 1,289.2 | 1,406.4 | 1,523.6 |
| BOILER HORSEPOWER | HP | 84 | 96 | 108 | 120 | 131 | 143 | 155 |
| | (KW) | 823 | 941 | 1,058 | 1,176 | 1,284 | 1,401 | 1,519 |
| TUBE DIAMETER | INCHES | 1.50 | 1.50 | 1.50 | 1.50 | 1.50 | 1.50 | 1.50 |
| | (CM) | 3.81 | 3.81 | 3.81 | 3.81 | 3.81 | 3.81 | 3.81 |
| NUMBER OF TUBES | | 53 | 59 | 67 | 75 | 83 | 89 | 97 |
| PRESSURE VESSEL | | | | | | | | |
| VOLUME | GAL | 146 | 160 | 179 | 198 | 217 | 232 | 251 |
| | (L) | 552.6 | 605.6 | 677.5 | 749.4 | 821.3 | 878.1 | 950.0 |
| HEATING SURFACE | SQ FT | 424 | 480 | 540 | 600 | 661 | 717 | 777 |
| | (SQ M) | 39.4 | 44.6 | 50.2 | 55.8 | 61.4 | 66.6 | 72.2 |
| OPERATING WEIGHT | LBS | 5,980 | 6,645 | 7,355 | 8,060 | 8,770 | 9,445 | 10,155 |
| | (KG) | 2,712.5 | 3,014.2 | 3,336.2 | 3,656.0 | 3,978.1 | 4,284.3 | 4,606.3 |
| SHIPPING WEIGHT | LBS | 4,760 | 5,310 | 5,860 | 6,410 | 6,960 | 7,510 | 8,060 |
| | (KG) | 2,159.1 | 2,408.6 | 2,658.1 | 2,907.6 | 3,157.1 | 3,406.5 | 3,656.0 |
| RELIEF VALVE TYPICAL 30 PSIG (206.8 KPA) | | | | | | | | |
| QUANTITY | | 1 | 1 | 2 | 2 | 2 | 2 | 2 |
| SIZE | INCHES | 2 x 2½ | 2 x 2½ | 1¼ x 2 | 2 x 2½ | 2 x 2½ | 2 x 2½ | 2 x 2½ |
| | (CM) | 5.08 x 6.35 | 5.08 x 6.35 | 3.17 x 5.08 | 5.08 x 6.35 | 5.08 x 6.35 | 5.08 x 6.35 | 5.08 x 6.35 |
| CAPACITY-TOTAL | MBH | 5,250 | 5,250 | 5,800 | 10,500 | 10,500 | 10,500 | 10,500 |
| | (KW) | 1,538.2 | 1,538.2 | 1,699.4 | 3,076.5 | 3,076.5 | 3,076.5 | 3,076.5 |
| RELIEF VALVE TYPICAL 125 PSIG (861.8 KPA) | | | | | | | | |
| QUANTITY | | 1 | 1 | 1 | 1 | 2 | 2 | 2 |
| SIZE | INCHES | 1¼ x 1¼ | 1¼ x 1¼ | 1½ x 1½ | 1½ x 1½ | 1¼ x 1¼ | 1¼ x 1¼ | 1¼ x 1¼ |
| | (CM) | 3.17 x 3.17 | 3.17 x 3.17 | 3.81 x 3.81 | 3.81 x 3.81 | 3.17 x 3.17 | 3.17 x 3.17 | 3.17 x 3.17 |
| CAPACITY-TOTAL | MBH | 5,370 | 5,370 | 6,460 | 6,460 | 10,740 | 10,740 | 10,740 |
| | (KW) | 1,573.4 | 1,573.4 | 1,892.8 | 1,892.8 | 3,146.8 | 3,146.8 | 3,146.8 |

* Output based on nominal 80% of Input. Actual combustion efficiencies may be higher.