

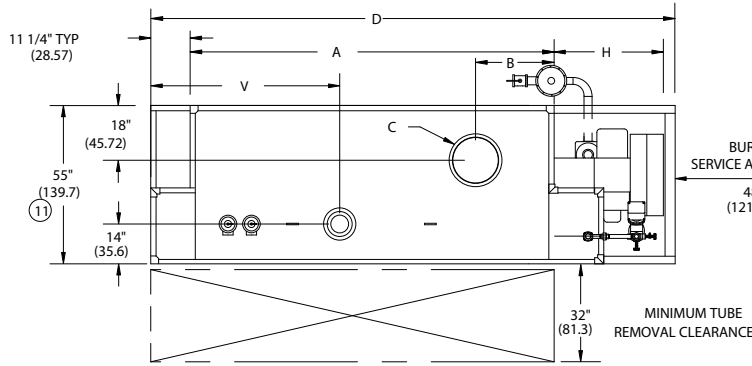
RV-KD SERIES FORCED DRAFT 15# & 150#
STEAM BOILERS (RV250-RV400)

EFFECTIVE DATE: 8/7/03

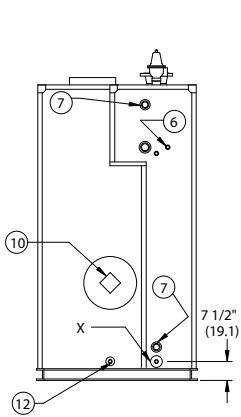
REPLACES:

NOTES:

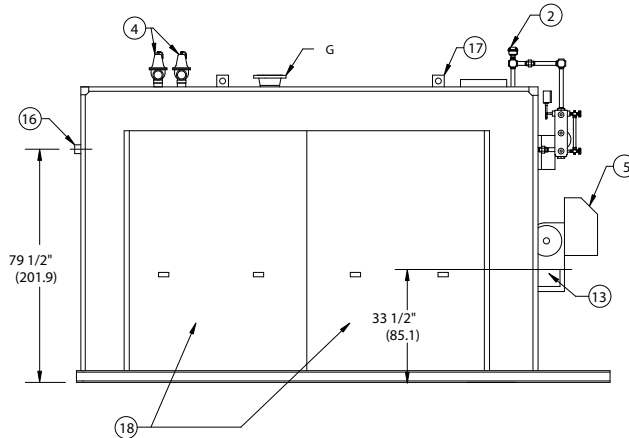
1. ALL DIMENSIONS ARE IN INCHES. THOSE IN PARENTHESES ARE CENTIMETERS.
2. LOCATION DIMENSIONS ARE ALL $\pm 1/2"$.
3. GAS TRAIN, CONTROL AND BURNER CONFIGURATION WILL VARY DEPENDING ON JOB SPECIFICATIONS & CONDITIONS.
4. DIMENSIONS ARE SUBJECT TO CHANGE WITHOUT NOTICE. CONSULT FACTORY FOR CERTIFIED DIMENSIONS.
5. ALL FLANGES ARE 150# UNLESS OTHERWISE NOTED.



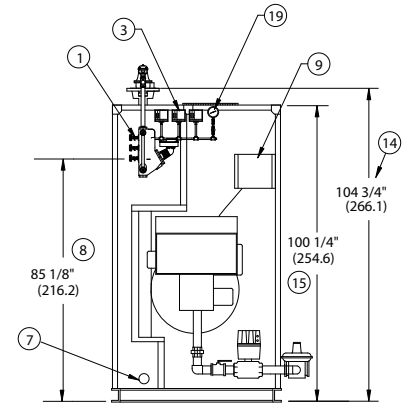
PLAN VIEW



REAR VIEW



LEFT SIDE VIEW



FRONT VIEW

1. L.W.C.O./PUMP CONTROL - 157	6. SURFACE BLOWOFF 1" NPT	11. WIDTH OVER BASE	16. FEEDWATER CONN. 2" NPT
2. PROBE TYPE AUX. L.W.C.O.	7. CLNOUT./INSP. OPNG.-1 1/2"NPT	12. COMB. CHAMBER DRAIN 1" NPT	17. LIFTING LUGS
3. PRESSURE CONTROLS	8. NORMAL BOILER WATER LEVEL	13. OIL CONNECTION	18. JACKET ACCESS PANELS
4. RELIEF VALVE(S)	9. ELEC. ENCLOSURE-	14. HEIGHT OVER FLOW NOZZLE	19. PRESSURE GAUGE
5. FORCED DRAFT BURNER	10. FLAME OBSERVATION PORT	15. HEIGHT OVER JACKET	

BOILER MODEL		RV250	RV300	RV350	RV400
A-LENGTH OVER JACKET		75 1/2" (191.8)	88 1/2" (224.8)	98" (248.9)	111" (281.9)
B-FLUE LOCATION		13 1/4" (33.7)	16 1/4" (41.3)	16" (40.6)	18 3/4" (47.6)
C-FLUE DIAMETER		12" (30.5)	12" (30.5)	16" (40.6)	16" (40.6)
D-LENGTH OVER BASE		119 3/8" (303.2)	132 1/4" (335.9)	141 7/8" (360.3)	156 1/8" (396.5)
G-SUPPLY NOZZLE SIZE	15 PSI	6" FLG (15.2)	6" FLG (15.2)	6" FLG (15.2)	8" FLG (20.3)
	150 PSI	4" FLG (10.2)	4" FLG (10.2)	4" FLG (10.2)	6" FLG (15.2)
H-BURNER EXTENSION	CONSULT FACTORY FOR BURNER EXTENSION APPLICATIONS				
V-SUPPLY NOZZLE LOC.		37 1/4" (96.4)	43 11/16" (110.9)	48 1/2" (123.2)	53 3/8" (135.5)
X-BLOWDOWN CONNECTION		1" (2.54)	1" (2.54)	1" (2.54)	1" (2.54)



BRYAN BOILERS

783 NORTH CHILI AVE
PERU, INDIANA 46970

ORDER NO.:

ORDER REV. NO.:

FORM NO.: 2168

RV SERIES FORCED DRAFT KNOCKDOWN STEAM BOILERS

BOILER MODEL		RV250	RV300	RV350	RV400
INPUT	MBH	2,500	3,000	3,500	4,000
	(KW)	732.5	879.0	1,025.5	1,172.0
OUTPUT*	MBH	2,000	2,400	2,800	3,200
	(KW)	586.0	703.2	820.4	937.6
BOILER HORSEPOWER	HP	60	72	84	96
	(KW)	586	703	820	937
TUBE DIAMETER	INCHES	1.50	1.50	1.50	1.50
	(CM)	3.81	3.81	3.81	3.81
NUMBER OF TUBES		33	41	47	55
PRESSURE VESSEL					
VOLUME	GAL	121	143	160	182
	(L)	458.0	541.3	605.6	688.9
HEATING SURFACE	SQ FT	299	365	419	490
	(SQ M)	27.8	33.9	38.9	45.5
STEAM OUTPUT*	LBS/HR	2,062	2,474	2,887	3,299
	(KG/HR)	935.3	1,122.3	1,309.4	1,496.4
OPERATING WEIGHT	LBS	6,979	8,098	8,604	9,848
	(KG)	3,165.7	3,673.1	3,903.0	4,467.0
SHIPPING WEIGHT	LBS	5,970	6,905	7,270	8,330
	(KG)	2,708.0	3,132.1	3,297.7	3,778.5
RELIEF VALVE TYPICAL - 15 PSIG (103.4 KPA)					
QUANTITY		(1) 12-206	(2) 12-205	(2) 12-205	(2) 12-205
SIZE	INCHES	2½ x 2½	2 x 2	2 x 2	2 x 2
	(CM)	6.35 x 6.35	5.08 x 5.08	5.08 x 5.08	5.08 x 5.08
CAPACITY-TOTAL	MBH	3,529	5,000	5,000	5,000
	(KW)	1,034.0	1,465.0	1,465.0	1,465.0
RELIEF VALVE TYPICAL - 150 PSIG (1,034.2 KPA)					
QUANTITY		(1) 6021FE	(1) 6021GF	(1) 6021GF	(1) 6021GF
SIZE	INCHES	1 x 1¼	1¼ x 1½	1¼ x 1½	1¼ x 1½
	(CM)	2.54 x 3.17	3.17 x 3.81	3.17 x 3.81	3.17 x 3.81
CAPACITY-TOTAL	MBH	2,583	4,234	4,234	4,234
	(KW)	756.8	1,240.6	1,240.6	1,240.6

* Output based on nominal 80% of input. Actual combustion efficiencies will vary and are fuel dependant.