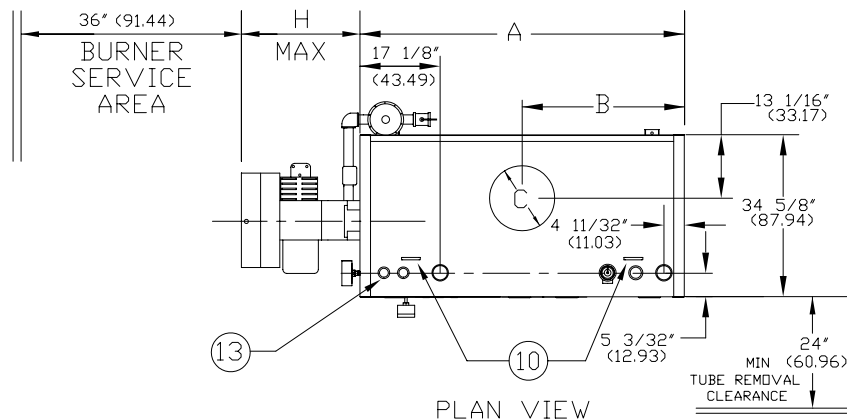


CLM SERIES FORCED DRAFT WATER BOILERS
(CLM120-CLM300) REVERSE CONSTRUCTION

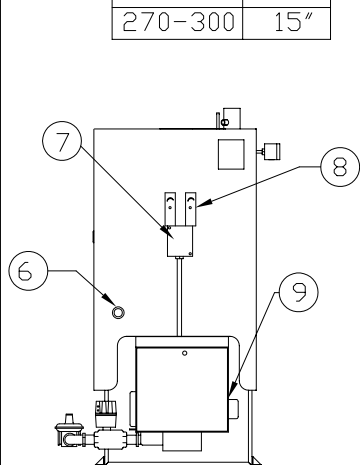
EFFECTIVE DATE: 10/02/08
REPLACES: 6/10/04

NOTES:

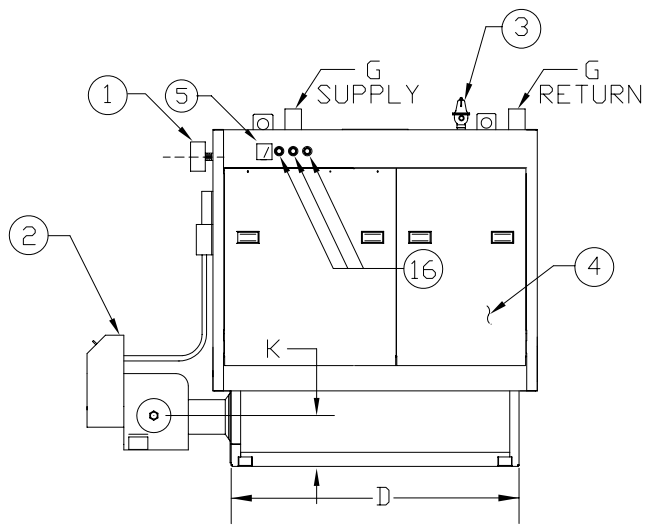
1. ALL DIMENSIONS ARE IN INCHES. THOSE IN PARENTHESES ARE CENTIMETERS.
2. LOCATION DIMENSIONS ARE ALL $\pm 1/2"$.
3. GAS TRAIN, CONTROL AND BURNER CONFIGURATION WILL VARY DEPENDING ON JOB SPECIFICATIONS & CONDITIONS.
4. DIMENSIONS ARE SUBJECT TO CHANGE WITHOUT NOTICE. CONSULT FACTORY FOR CERTIFIED DIMENSIONS.



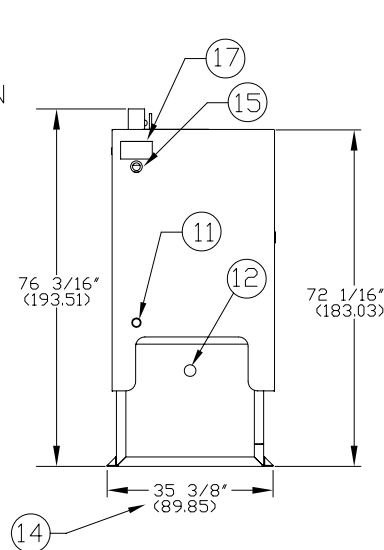
| | |
|---------|-----|
| MODEL | K |
| 120-240 | 12" |
| 270-300 | 15" |



FRONT VIEW



RIGHT SIDE VIEW



REAR VIEW

| | | | |
|------------------------|---------------------------------|----------------------------------|-------------------------|
| 1. PROBE TYPE L.W.C.D. | 6. CLNDUT./INSP. DPNG-1 1/2"NPT | 11. DRAIN CONNECTION | 16. CONTROL CONNECTIONS |
| 2. FORCED DRAFT BURNER | 7. ELEC. ENCLOSURE | 12. FLAME OBSERVATION PORT | 17. ASME NAME PLATE |
| 3. RELIEF VALVE | 8. AQUASTATS | 13. 1" (2.54) EXP TANK CONN | |
| 4. TUBE ACCESS PANEL | 9. OIL PUMP LOCATION | 14. WIDTH OVER MTG BASE | |
| 5. PRESS/TEMP. GAUGE | 10. LIFTING LUG | 15. CLNDUT./INSP. DPNG-1 1/4"NPT | |

| BOILER MODEL | CLM120 | CLM150 | CLM180 | CLM210 | CLM240 | CLM270 | CLM300 |
|------------------------------|--------------------|--------------------|------------------|------------------|------------------|-------------------|-------------------|
| A-LENGTH OVER JACKET | 50 11/16" (128.74) | 59 11/16" (151.60) | 69 1/8" (175.57) | 78 3/8" (199.07) | 88" (223.52) | 97" (246.38) | 106 5/8" (270.82) |
| B-FLUE LOCATION | 25 5/16" (64.29) | 29 13/16" (75.72) | 34 9/16" (87.78) | 39 3/16" (99.53) | 44" (111.76) | 48 1/2" (123.19) | 53 5/16" (135.41) |
| C-FLUE DIAMETER | 10" (25.40) | 12" (30.48) | 14" (35.56) | 14" (35.56) | 16" (40.64) | 16" (40.64) | 16" (40.64) |
| D-LENGTH OVER BASE | 43 1/8" (109.53) | 52 3/8" (133.03) | 61 5/8" (156.52) | 70 7/8" (180.02) | 80 1/8" (203.51) | 89 7/16" (219.54) | 99 1/16" (251.61) |
| G-SUPPLY/ RETURN NOZZLE SIZE | 3" (7.62) | 3" (7.62) | 3" (7.62) | 3" (7.62) | 3" (7.62) | 3" (7.62) | 3" (7.62) |

H-BURNER EXTENSION CONSULT FACTORY FOR BURNER EXTENSION APPLICATIONS



BRYAN BOILERS

783 NORTH CHILI AVE
PERU, INDIANA 46970

ORDER NO.:
ORDER REV. NO.:
FORM NO.: 2150

CLM SERIES FORCED DRAFT WATER BOILER REVERSE CONSTRUCTION

| BOILER MODEL | | CLM120 | CLM150 | CLM180 | CLM210 | CLM240 | CLM270 | CLM300 |
|--------------------|--------|---------|---------|---------|---------|---------|---------|---------|
| INPUT | MBH | 1,200 | 1,500 | 1,800 | 2,100 | 2,400 | 2,700 | 3,000 |
| | (KW) | 351.6 | 439.5 | 527.4 | 615.3 | 703.2 | 791.1 | 879.0 |
| OUTPUT* | MBH | 978 | 1,223 | 1,467 | 1,712 | 1,956 | 2,201 | 2,445 |
| | (KW) | 286.6 | 358.2 | 429.8 | 501.5 | 573.1 | 644.7 | 716.4 |
| BOILER HORSEPOWER* | HP | 29 | 37 | 44 | 51 | 58 | 66 | 73 |
| | (KW) | 286 | 358 | 429 | 501 | 573 | 644 | 716 |
| TUBE DIAMETER | INCHES | 1.00 | 1.00 | 1.00 | 1.00 | 1.00 | 1.00 | 1.00 |
| | (CM) | 2.54 | 2.54 | 2.54 | 2.54 | 2.54 | 2.54 | 2.54 |
| NUMBER OF TUBES | | 36 | 45 | 54 | 63 | 72 | 81 | 90 |
| PRESSURE VESSEL | | | | | | | | |
| VOLUME | GAL | 38 | 47 | 55 | 63 | 71 | 80 | 88 |
| | (L) | 143.8 | 177.9 | 208.2 | 238.5 | 268.7 | 302.8 | 333.1 |
| HEATING SURFACE | SQ FT | 145 | 180 | 215 | 251 | 287 | 322 | 360 |
| | (SQ M) | 13.5 | 16.7 | 20.0 | 23.3 | 26.7 | 29.9 | 33.5 |
| OPERATING WEIGHT | LBS | 3,000 | 3,510 | 4,025 | 4,535 | 5,050 | 6,010 | 6,150 |
| | (KG) | 1,360.8 | 1,592.1 | 1,825.7 | 2,057.1 | 2,290.7 | 2,726.1 | 2,789.6 |
| SHIPPING WEIGHT | LBS | 2,250 | 2,675 | 2,975 | 3,475 | 3,900 | 4,400 | 4,800 |
| | (KG) | 1,020.6 | 1,213.4 | 1,349.5 | 1,576.3 | 1,769.0 | 1,995.8 | 2,177.3 |

* Output and Boiler HP based on an average natural gas combustion efficiency.