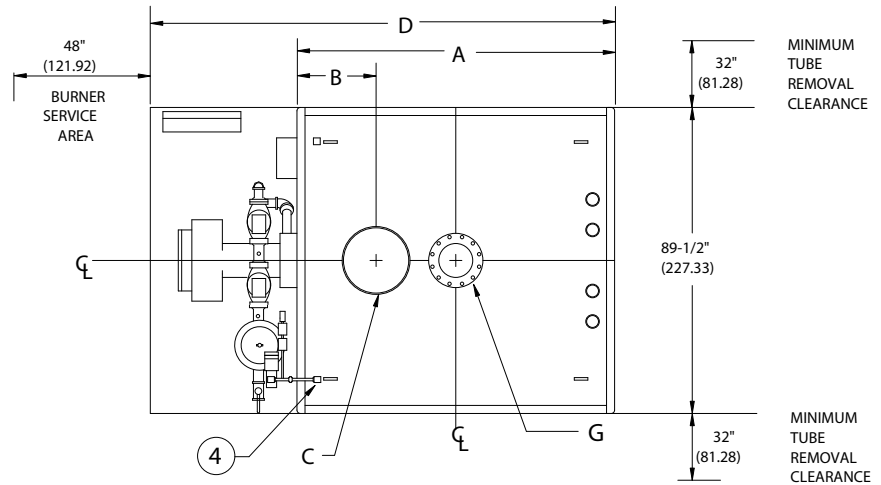


RW SERIES FORCED DRAFT 15# & 150#  
STEAM BOILER (RW850-RW1500)

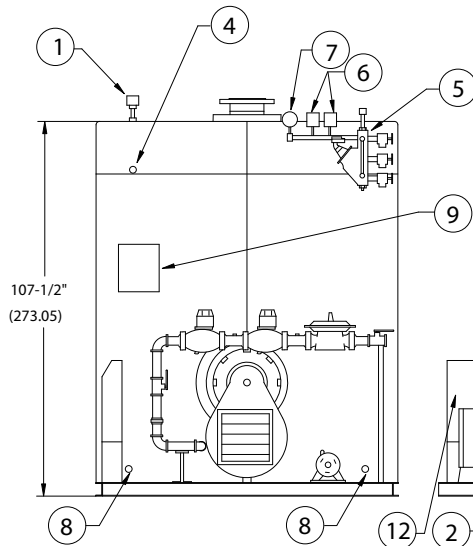
EFFECTIVE DATE: 9/17/03  
REPLACES: 8/4/01

NOTES:

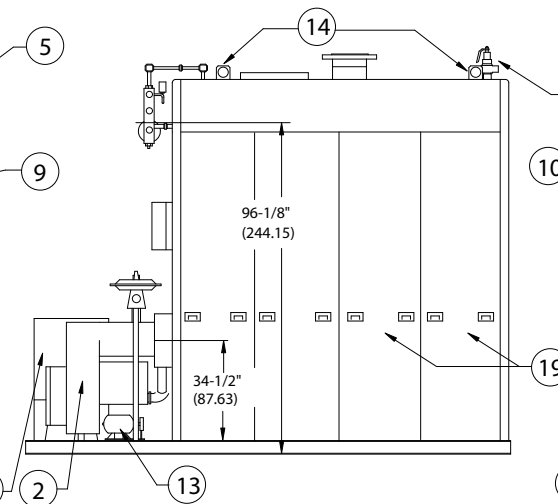
1. ALL DIMENSIONS ARE IN INCHES. THOSE IN PARENTHESIS ARE CENTIMETERS.
2. LOCATION DIMENSIONS ARE ALL  $\pm 1/2"$ .
3. GAS TRAIN, CONTROL AND BURNER CONFIGURATION WILL VARY DEPENDING ON JOB SPECIFICATIONS & CONDITIONS.
4. DIMENSIONS ARE SUBJECT TO CHANGE WITHOUT NOTICE. CONSULT FACTORY FOR CERTIFIED DIMENSIONS.
5. ALL FLANGES ARE 150# UNLESS OTHERWISE NOTED.
6. ALL CONNECTIONS ARE FEMALE NPT.



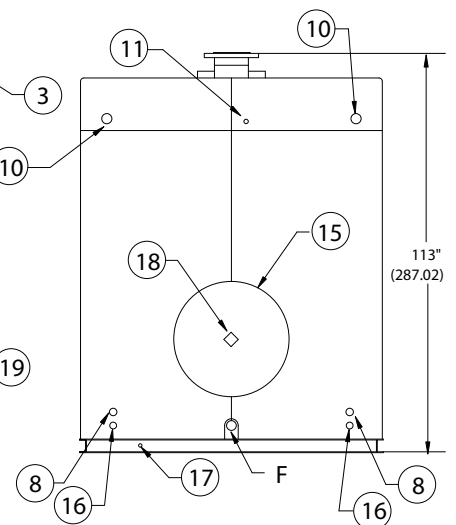
PLAN VIEW



FRONT VIEW



RIGHT SIDE VIEW



REAR VIEW

- |                             |                                  |                               |                            |
|-----------------------------|----------------------------------|-------------------------------|----------------------------|
| 1. PROBE TYPE AUX. L.W.C.O. | 6. PRESSURE CONTROLS             | 11. SURFACE BLOWDOWN - 1" NPT | 16. 1" BLOWDOWN CONN.      |
| 2. FORCED DRAFT BURNER      | 7. PRESSURE GAUGE                | 12. BURNER CONTROL PANEL      | 17. DRAIN                  |
| 3. RELIEF VALVE             | 8. CLNOUT./INSP. OPNG.-1 1/2"NPT | 13. REMOTE OIL PUMP           | 18. FLAME OBSERVATION PORT |
| 4. 1" CONTROL CONN.         | 9. ELEC. ENCLOSURE -             | 14. LIFTING LUGS              | 19. JACKET ACCESS PANEL    |
| 5. LWCO/PUMP CONTROL - 157  | 10. CLNOUT./INSP. OPNG. - 2" NPT | 15. ACCESS DOOR COVER         | 20.                        |

BOILER MODEL	RW850	RW1050	RW1260	RW1500
A-LENGTH OVER JACKET	124" (314.96)	134" (340.36)	156 1/2" (397.51)	179" (454.66)
B-FLUE LOCATION	36" (91.44)	36" (91.44)	37" (93.98)	37" (93.98)
C-FLUE DIAMETER	20" (50.80)	20" (50.80)	22" (55.88)	22" (55.88)
D-LENGTH OVER BASE	163 3/4" (415.93)	176 5/8" (448.63)	199 1/4" (506.10)	221 3/4" (563.25)
F-FEED CONN. SIZE	2" (5.08)	2" (5.08)	2" (5.08)	2" (5.08)
G-SUPPLY NOZZLE SIZE	15#	10" FLG. (25.4)	10" FLG. (25.4)	12" FLG. (30.48)
	150#	6" FLG. (15.24)	6" FLG. (15.24)	8" FLG. (20.32)



783 N CHILI AVE  
PERU, INDIANA 46970

ORDER NO.:	
ORDER REV. NO.:	
FORM NO.:	1966

# RW SERIES FORCED DRAFT STEAM BOILERS

BOILER MODEL		RW850	RW1050	RW1260	RW1500
INPUT	MBH	8,500	10,500	12,600	15,000
	(KW)	2,490.5	3,076.5	3,691.8	4,395.0
OUTPUT*	MBH	6,800	8,400	10,080	12,000
	(KW)	1,992.4	2,461.2	2,953.4	3,516.0
BOILER HORSEPOWER	HP	200	250	300	350
	(KW)	1,960.0	2,450.0	2,940.0	3,430.0
TUBE DIAMETER	INCHES	1.50	1.50	1.50	1.50
	(CM)	3.81	3.81	3.81	3.81
NUMBER OF TUBES		120	136	164	192
PRESSURE VESSEL					
VOLUME	GAL	780	860	1,000	1,140
	(L)	2,952.3	3,255.1	3,785.0	4,314.9
HEATING SURFACE	SQ FT	1,136	1,288	1,552	1,818
	(SQ M)	105.6	119.7	144.2	169.0
STEAM OUTPUT*					
	LBS/HR	7,010	8,659	10,391	12,371
	(KG/HR)	3,179.7	3,927.7	4,713.4	5,611.5
OPERATING WEIGHT	LBS	23,605	26,572	33,040	36,008
	(KG)	10,707.3	12,053.2	14,986.9	16,333.0
SHIPPING WEIGHT	LBS	17,100	19,400	24,700	26,500
	(KG)	7,756.6	8,799.8	11,203.9	12,020.4
RELIEF VALVE TYPICAL - 15 PSIG (103.4 KPA)					
QUANTITY		(2) 14-207	(2) 14-207	(3) 14-207	(2) 14-207
SIZE	INCHES	3 x 3	3 x 3	3 x 3	3 x 3
	(CM)	7.62 x 7.62	7.62 x 7.62	7.62 x 7.62	7.62 x 7.62
CAPACITY-TOTAL	MBH	13,686	13,686	20,529	20,529
	(KW)	4,010.0	4,010.0	6,014.9	6,014.9
RELIEF VALVE TYPICAL - 150 PSIG (1034.0 KPA)					
QUANTITY		(2) 6021GF01	(1) 6021GF01 (1) 6021HG01	(2) 6021HG01	(1) 6021HG01 (1) 6021JH01
SIZE	INCHES	1 ¼ x 1 ½	1 ¼ x 1 ½ 1 ½ x 2	1 ½ x 2	1 ½ x 2 2 x 2 ½
	(CM)	3.17 x 3.81	3.17 x 3.81 3.81 x 5.08	3.81 x 5.08	3.81x5.08 5.08x6.35
CAPACITY-TOTAL	MBH	8,468	10,830	13,192	16,427
	(KW)	2,481.1	3,173.2	3,865.2	4,813.1

\* Output based on nominal 80% of input. Actual combustion efficiencies will be higher and fuel dependent.