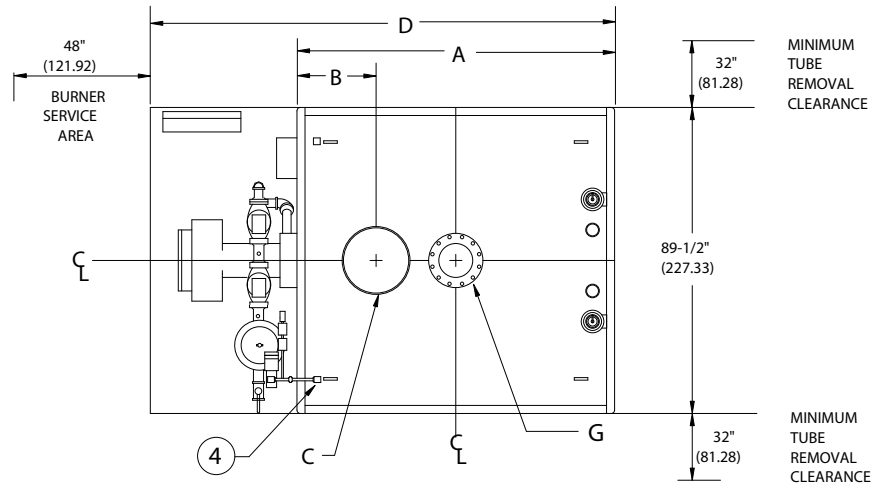


RW SERIES FORCED DRAFT 15# & 150#
STEAM BOILER (RW1700-RW2100)

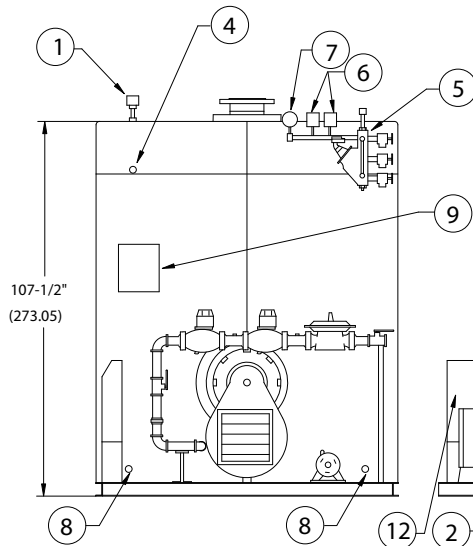
EFFECTIVE DATE: 9/18/03
REPLACES: 9/4/01

NOTES:

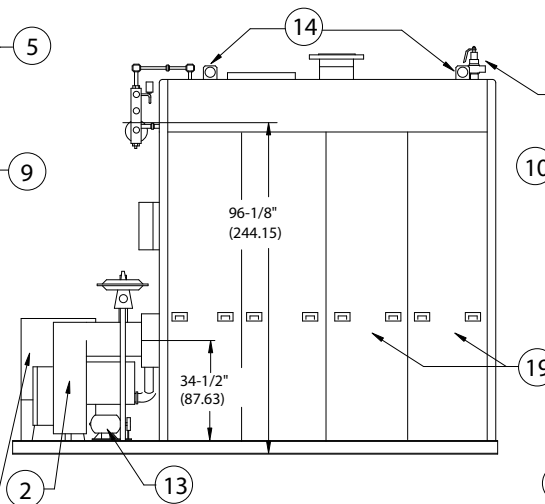
1. ALL DIMENSIONS ARE IN INCHES THOSE IN PARENTHESES ARE CENTIMETERS.
2. LOCATION DIMENSIONS ARE ALL $\pm 1/2"$.
3. GAS TRAIN, CONTROL AND BURNER CONFIGURATION WILL VARY DEPENDING ON JOB SPECIFICATIONS & CONDITIONS.
4. DIMENSIONS ARE SUBJECT TO CHANGE WITHOUT NOTICE. CONSULT FACTORY FOR CERTIFIED DIMENSIONS.
5. ALL FLANGES ARE 150# UNLESS OTHERWISE NOTED, FLANGES TO STRADDLE CENTER LINE.
6. ALL CONNECTIONS ARE FEMALE NPT.



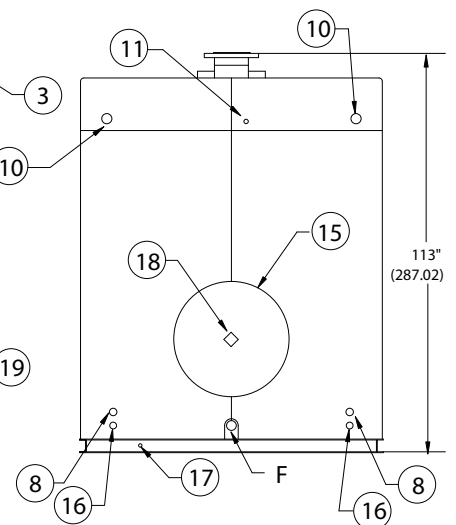
PLAN VIEW



FRONT VIEW



RIGHT SIDE VIEW



REAR VIEW

1. PROBE TYPE AUX. L.W.C.O.
2. FORCED DRAFT BURNER
3. RELIEF VALVE
4. 1" CONTROL CONN.
5. LWCO/PUMP CONTROL - 157

6. PRESSURE CONTROLS
7. PRESSURE GAUGE
8. CLNOUT./INSP. OPNG.-1 1/2"NPT
9. ELEC. ENCLOSURE -
10. CLNOUT./INSP. OPNG. - 2" NPT

11. SURFACE BLOWDOWN - 1" NPT
12. BURNER CONTROL PANEL
13. REMOTE OIL PUMP
14. LIFTING LUGS
15. ACCESS DOOR COVER

16. 1" BLOWDOWN CONN.
17. DRAIN
18. FLAME OBSERVATION PORT
19. JACKET ACCESS PANEL
- 20.

| BOILER MODEL | RW1700 | RW1900 | RW2100 |
|----------------------|-------------------|-------------------|-------------------|
| A-LENGTH OVER JACKET | 201 1/2" (511.81) | 224" (568.96) | 246 1/2" (626.11) |
| B-FLUE LOCATION | 38" (96.52) | 39" (99.06) | 40" (101.60) |
| C-FLUE DIAMETER | 24" (60.96) | 26" (66.04) | 28" (71.12) |
| D-LENGTH OVER BASE | 244 1/4" (620.40) | 266 3/4" (677.55) | 289 1/2" (735.33) |
| F-FEED CONN. SIZE | 2" (5.08) | 2" (5.08) | 2" (5.08) |
| G-SUPPLY NOZZLE SIZE | 15# | 12" FLG. (30.48) | 12" FLG. (30.48) |
| | 150# | 8" FLG. (20.32) | 8" FLG. (20.32) |



BRYAN BOILERS

783 N CHILI AVE
PERU, INDIANA 46970

ORDER NO.:

ORDER REV. NO.:

FORM NO.: 1967

RW SERIES FORCED DRAFT STEAM BOILERS

| BOILER MODEL | | RW1700 | RW1900 | RW2100 |
|--|---------|------------------------------|------------------------------|--------------|
| INPUT | MBH | 17,000 | 19,000 | 21,000 |
| | (KW) | 4,981.0 | 5,566.9 | 6,152.9 |
| OUTPUT* | MBH | 13,600 | 15,200 | 16,800 |
| | (KW) | 3,984.8 | 4,453.6 | 4,922.4 |
| BOILER HORSEPOWER | HP | 400 | 450 | 500 |
| | (KW) | 3,920.0 | 4,410.0 | 4,900.0 |
| TUBE DIAMETER | INCHES | 1.50 | 1.50 | 1.50 |
| | (CM) | 3.81 | 3.81 | 3.81 |
| NUMBER OF TUBES | | 220 | 248 | 276 |
| PRESSURE VESSEL | | | | |
| VOLUME | GAL | 1,280 | 1,415 | 1,555 |
| | (L) | 4,844.8 | 5,355.8 | 5,885.7 |
| HEATING SURFACE | SQ FT | 2,087 | 2,347 | 2,612 |
| | (SQ M) | 194.0 | 218.1 | 242.8 |
| STEAM OUTPUT* | | | | |
| | LBS/HR | 14,020 | 15,670 | 17,319 |
| | (KG/HR) | 6,359.5 | 7,107.9 | 7,855.9 |
| OPERATING WEIGHT | LBS | 43,000 | 46,110 | 49,800 |
| | (KG) | 19,504.8 | 20,915.5 | 22,589.3 |
| SHIPPING WEIGHT | LBS | 32,400 | 34,300 | 36,800 |
| | (KG) | 14,696.6 | 15,558.5 | 16,692.5 |
| RELIEF VALVE TYPICAL - 15 PSIG (103.4 KPA) | | | | |
| QUANTITY | | (4) 14-207 | (4) 14-207 | (4) 14-207 |
| SIZE | INCHES | 3 x 3 | 3 x 3 | 3 x 3 |
| | (CM) | 7.62 x 7.62 | 7.62 x 7.62 | 7.62 x 7.62 |
| CAPACITY-TOTAL | MBH | 27,372 | 27,372 | 27,372 |
| | (KW) | 8,019.9 | 8,019.9 | 8,019.9 |
| RELIEF VALVE TYPICAL - 150 PSIG (1034.0 KPA) | | | | |
| QUANTITY | | (1) 6021HG01 (1) 6021JH01 | (1) 6021HG01 (1) 6021JH01 | (2) 6021JH01 |
| SIZE | INCHES | 1½x2 2x2½ | 1½x2 2x2½ | 2x2½ |
| | (CM) | 3.81x5.08 5.08x6.35 | 3.81x5.08 5.08x6.35 | 5.08x6.35 |
| CAPACITY-TOTAL | MBH | 16,427 | 16,427 | 19,646 |
| | (KW) | 4,813.1 | 4,813.1 | 5,756.2 |

* Output based on nominal 80% of input. Actual combustion efficiencies will be higher and fuel dependent.