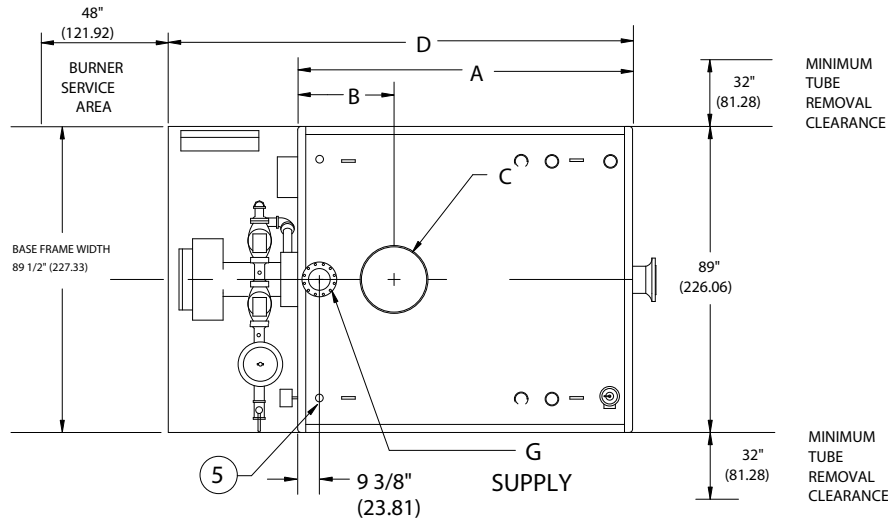


**RW SERIES FORCED DRAFT WATER BOILERS  
(RW850-RW2100)**

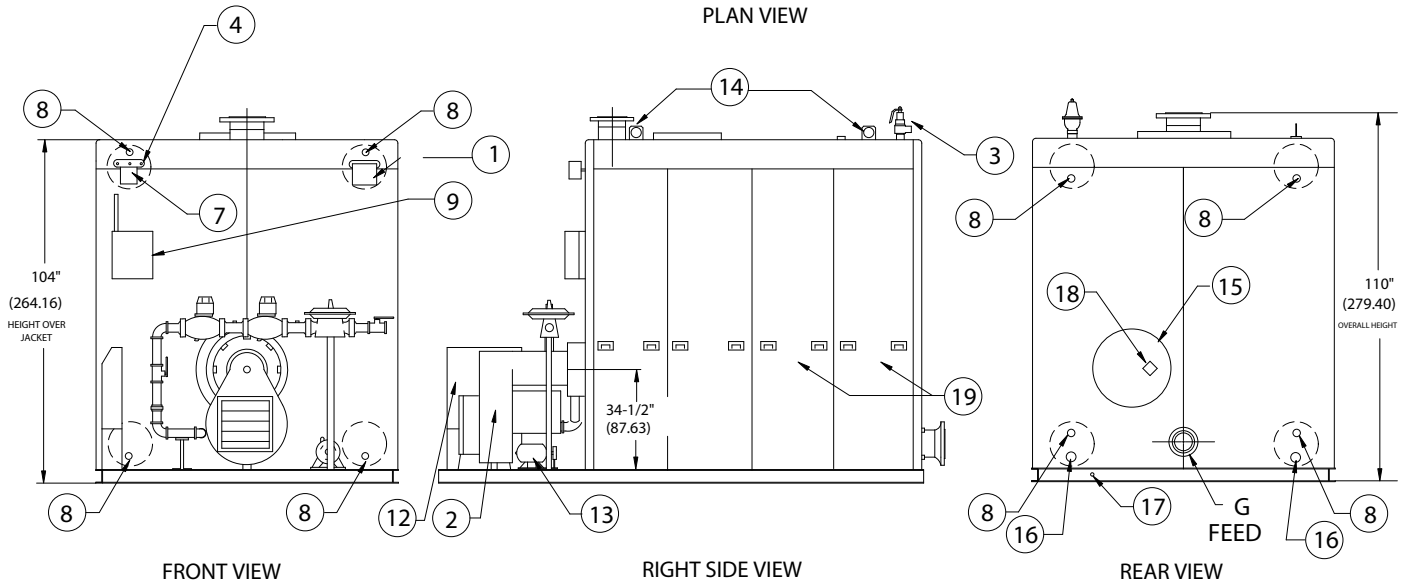
EFFECTIVE DATE: 9/17/03  
REPLACES: 3/6/00

**NOTES:**

1. ALL DIMENSIONS ARE IN INCHES. THOSE IN PARENTHESES ARE CENTIMETERS.
2. LOCATION DIMENSIONS ARE ALL ±1/2".
3. GAS TRAIN, CONTROL AND BURNER CONFIGURATION WILL VARY DEPENDING ON JOB SPECIFICATIONS & CONDITIONS.
4. DIMENSIONS ARE SUBJECT TO CHANGE WITHOUT NOTICE. CONSULT FACTORY FOR CERTIFIED DIMENSIONS.
5. ALL FLANGES ARE 150# UNLESS OTHERWISE NOTED.
6. ALL CONNECTIONS ARE FEMALE NPT.



**PLAN VIEW**



**FRONT VIEW**

**RIGHT SIDE VIEW**

**REAR VIEW**

1. PROBE TYPE L.W.C.O. 2. FORCED DRAFT BURNER 3. RELIEF VALVE 4. CONTROL CONN. 5. 1" CONTROL & EXP TANK CONN	7. PRESSURE/TEMP GAUGE 8. CLNOUT./INSP. OPNG.-1 1/2"NPT 9. ELEC. ENCLOSURE -	12. BURNER CONTROL PANEL 13. REMOTE OIL PUMP 14. LIFTING LUGS 15. ACCESS DOOR COVER	16. 2" BLOWDOWN CONN. 17. DRAIN 18. FLAME OBSERVATION PORT 19. JACKET ACCESS PANEL
--	--	--	---

BOILER MODEL	RW850	RW1050	RW1260	RW1500	RW1700	RW1900	RW2100
A-LENGTH OVER JACKET	124" (314.96)	134" (340.36)	156 1/2" (397.51)	179" (454.66)	201 1/2" (511.81)	224" (568.96)	246 1/2" (626.11)
B-FLUE LOCATION	36" (91.44)	36" (91.44)	37" (93.98)	37" (93.98)	38" (96.52)	39" (99.06)	40" (101.60)
C-FLUE DIAMETER	20" (50.80)	20" (50.80)	22" (55.88)	22" (55.88)	24" (60.96)	26" (66.04)	28" (71.12)
D-LENGTH OVER BASE	163 3/4" (415.93)	176 5/8" (448.63)	199 1/4" (506.10)	221 3/4" (563.25)	244 1/4" (620.40)	266 3/4" (677.55)	289 1/2" (735.33)
G-SUPPLY / FEED NOZZLE SIZE	8" FLG. (20.32)	8" FLG. (20.32)	8" FLG. (20.32)	8" FLG. (20.32)	8" FLG. (20.32)	10" FLG. (25.4)	10" FLG. (25.4)



**BRYAN BOILERS**

783 N CHILI AVE  
PERU, INDIANA 46970

ORDER NO.:	
ORDER REV. NO.:	
FORM NO.:	2174

## RW SERIES FORCED DRAFT WATER BOILER

BOILER MODEL		RW850	RW1050	RW1260	RW1500	RW1700	RW1900	RW2100
INPUT	MBH	8,500	10,500	12,600	15,000	17,000	19,000	21,000
	(KW)	2,490.5	3,076.5	3,691.8	4,395.0	4,981.0	5,566.9	6,152.9
OUTPUT*	MBH	7,140	8,820	10,584	12,600	14,280	15,960	17,640
	(KW)	2,092.0	2,584.2	3,101.1	3,691.8	4,184.0	4,676.2	5,168.5
BOILER HORSEPOWER*	HP	213	263	316	376	427	477	527
	(KW)	2,090	2,582	3,099	3,689	4,181	4,672	5,164
TUBE DIAMETER	INCHES	1.50	1.50	1.50	1.50	1.50	1.50	1.50
	(CM)	3.81	3.81	3.81	3.81	3.81	3.81	3.81
NUMBER OF TUBES		120	136	164	192	220	248	276
PRESSURE VESSEL								
VOLUME	GAL	472	522	608	695	781	868	955
	(L)	1,786.5	1,975.8	2,301.3	2,630.6	2,956.1	3,285.4	3,614.7
HEATING SURFACE	SQ FT	1,118	1,266	1,527	1,787	2,048	2,308	2,569
	(SQ M)	103.9	117.7	141.9	166.1	190.3	214.5	238.8
OPERATING WEIGHT	LBS	20,640	22,895	25,845	28,870	31,430	34,200	36,770
	(KG)	9,362.3	10,385.2	11,723.3	13,095.4	14,256.6	15,513.1	16,678.9
SHIPPING WEIGHT	LBS	16,700	18,540	20,770	23,070	24,910	26,950	28,800
	(KG)	7,575.1	8,409.7	9,421.3	10,464.6	11,299.2	12,224.5	13,063.7
RELIEF VALVE TYPICAL 30 PSIG (206.8 KPA)								
QUANTITY		3	3	3	4	4	5	5
SIZE	INCHES	2 x 2½	2 x 2½	2 x 2½	2 x 2½	2 x 2½	2 x 2½	2 x 2½
	(CM)	5.08 x 6.35	5.08 x 6.35	5.08 x 6.35	5.08 x 6.35	5.08 x 6.35	5.08 x 6.35	5.08 x 6.35
CAPACITY-TOTAL	MBH	15,750	15,750	15,750	21,000	21,000	26,250	26,250
	(KW)	4,614.7	4,614.7	4,614.7	6,152.9	6,152.9	7,691.2	7,691.2
RELIEF VALVE TYPICAL 125 PSIG (861.8 KPA)								
QUANTITY		2	2	2	2	2	2	3
SIZE	INCHES	1½ x 1½	1½ x 1½	2 x 2	2 x 2	2 x 2	2 x 2	2 x 2
	(CM)	3.81 x 3.81	3.81 x 3.81	5.08 x 5.08	5.08 x 5.08	5.08 x 5.08	5.08 x 5.08	5.08 x 5.08
CAPACITY-TOTAL	MBH	12,920	12,920	24,340	24,340	24,340	24,340	36,510
	(KW)	3,785.5	3,785.5	7,131.6	7,131.6	7,131.6	7,131.6	10,697.3

\* Output and Boiler HP based on an average natural gas combustion efficiency.