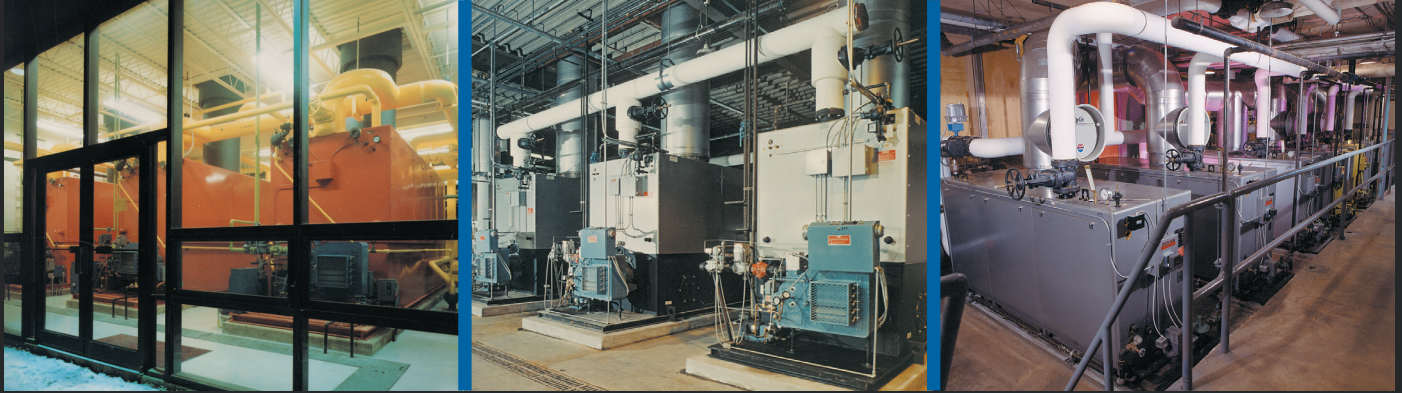


# **BRYAN**. BOILERS.



Boiler technology leaders  
since 1916.

*A subsidiary of Burnham Holdings*

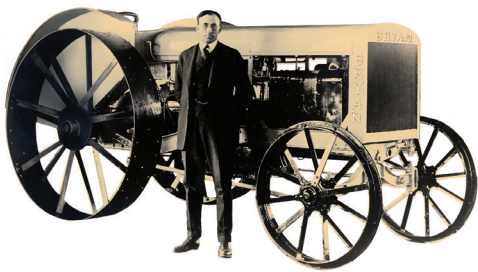


# BRYAN® BOILERS.

## Originators of the “Flexible Water Tube” design

- George Bryan invented the flexible water tube boiler.
- 99 years of continuous boiler technology improvements followed.
- Bryan has delivered higher and higher boiler efficiencies.
- Nobody delivers a more efficient boiler. **Nobody.**

Bryan Steam, originators of the “Flexible Water Tube” design, offers a line of boilers including forced draft gas, electric, condensing, Low NOx and knockdown boilers in capacities from 6 to 600 hp for industrial, commercial and institutional applications. The “Flexible Water Tube” design provides fast, natural internal circulation for maximum heat transfer and operating efficiency. Bryan Steam also manufactures indirect water heaters, pool heaters, feed systems and related equipment and accessories.



Quick Reference Selection Chart

Bryan Boiler Series	Size Ranges			Boiler Type		Energy Source				Low Nox Package Option	Knock-down Option
	MBH Input	MBH Output	BHP Output	Hot Water	Steam	Forced Draft Gas	Forced Draft Oil	Dual-Fuel (Gas/Oil)	Electric		
Triple-Flex	1,500-3,000	1,350-2,940	40-90	X		X				X	
DR	250-850	200-680	6-21	X	X	X	X	X		X	
AB	900-3,000	720-2,400	21-75	X	X	X	X	X		X	X
HE-AB	900-3,000	765-2,550	23-76	X		X				X	X
RV	3,500-8,000	2,800-6,400	84-201	X	X	X	X	X		X	X
HE-RV	3,500-8,000	2,975-6,800	89-203	X		X				X	X
RW	8,500-21,000	6,800-16,800	200-527	X	X	X	X	X		X	
CLM	1,200-3,000	960-2,400	29-73	X	X	X	X	X			X
HE-CLM	900-3,000	765-2,550	23-76	X		X					X
BE	30KW-330KW	98-1,081	3-39	X	X				X	X**	
BH	60KW-3,000KW	196-9,828	6-300	X	X				X	X**	

\*\* There are no emissions from electric boilers.

# Boiler technology leaders since 1916.

- **Forced draft gas, oil and dual-fuel boilers... hot water and steam**

*Hot water and steam\* boilers with forced draft gas, oil or dual-fuel firing. Bryan's largest boilers for the big heating requirements. Sizes from 8,500 MBH to 21,000 MBH input (200 BHP to 527 BHP output).*



- **High efficiency forced draft gas, oil and dual-fuel boilers... hot water**

*High efficiency versions of AB and RV Series forced draft gas hot water boilers. Integrated, extended surface heat extractor boosts guaranteed performance of these boilers to 85% without complications of condensation. HE-AB Series from 900 MBH to 3,000 MBH input (23 BHP to 76 BHP output). HE-RV Series from 3,500 MBH to 8,000 MBH input (89 BHP to 203 BHP output).*



- **Triple-Flex™ ultra-high efficiency condensing boilers... hot water**

*TF300 - Minimum 90% thermal efficiency with 160° return, 180° supply at 100% load. Efficiencies to 99%. Sizes from 1500 MBH to 3000 MBH input.*



- **Electric boilers... hot water and steam**

*For medium to high capacity applications. Heavy steel pressure vessel. Horizontal or vertical configuration. Incoloy sheathed heating elements, in 208, 240, 460, 480 or 575 volt. Units rated from 60 to 3,000 KW input, 196 MBH to 9,828 MBH output. Hot water, high temperature hot water, steam and high pressure steam models.*



- **Knockdown™ and reverse construction boilers**

*Installation of two Bryan Knockdown, RV Series boilers, with 7,000 MBH each. The Knockdown™ sections were moved to location through existing doorways and assembled in position. Reverse construction too.*



- **Complete boiler room accessories**

*Horizontal boiler feed systems, feed-water softener systems, deaerators, overflow traps, automatic blow-down systems, exhaust heads, heat exchanger type pool heaters and shell and tube heat exchangers.*



\*Bryan steam boilers are available as standard for 15 psi MWP or 150 psi MWP. Also available for steam pressures up to 300 psi.

# Your complete boiler room solution.



**Bryan Steam LLC — Leaders Since 1916**

783 N. Chili Ave., Peru, Indiana 46970 U.S.A.

Phone: 765-473-6651 • [www.bryanboilers.com](http://www.bryanboilers.com)

Fax: 765-473-3074 • E-mail: [inquiry@bryansteam.com](mailto:inquiry@bryansteam.com)