

EXHAUST HEADS (FLANGED)

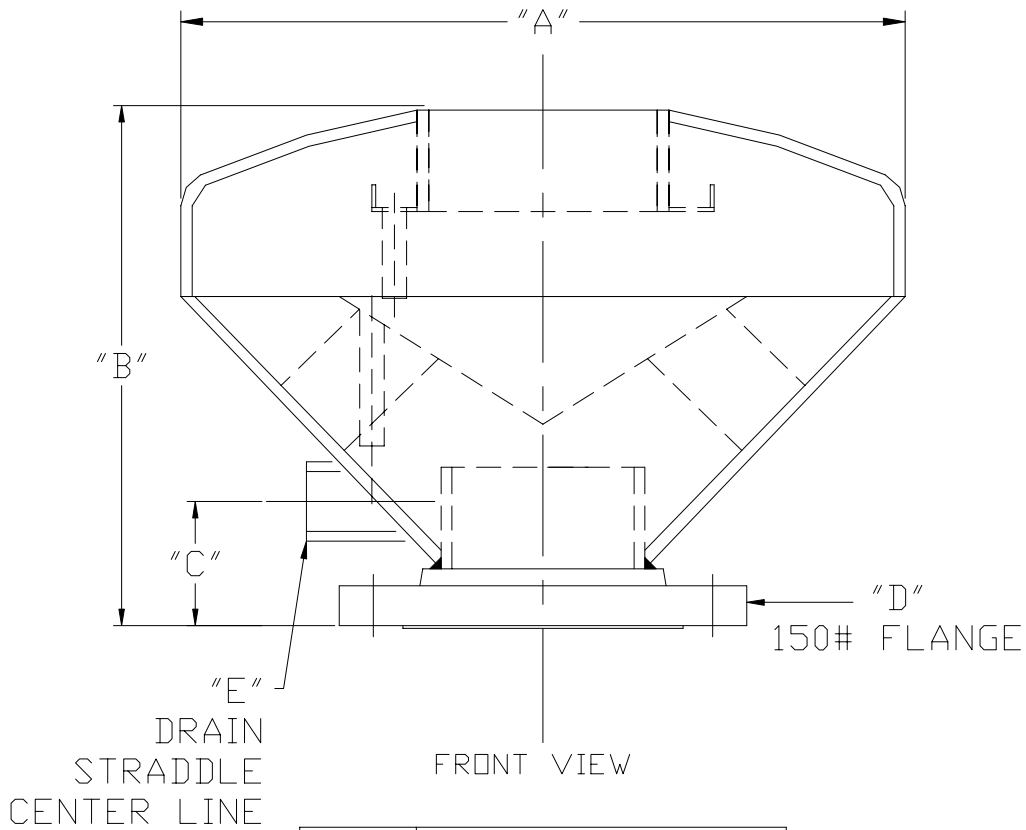
EFFECTIVE DATE: 2/1/04

REPLACES:

NOTES:

1. DIMENSIONS ARE SUBJECT TO CHANGE WITHOUT NOTICE. CONSULT FACTORY FOR CERTIFIED DIMENSIONS.

MATERIALS OF CONSTRUCTION : CARBON STEEL
EXTERNAL SURFACES PAINTED WITH ONE COAT OF HEAT RESISTANT ALUMINUM PAINT.



MODELS	DIMENSIONS				
	A	B	C	D	E
HEH-3F	12-3/4"	14-3/16"	4-1/2"	3" FLG	3/4" NPT
HEH-4F	16"	11-1/2"	2-3/4"	4" FLG	1" NPT
HEH-5F	16"	11-1/2"	2-7/8"	5" FLG	1" NPT
HEH-6F	18"	15-3/4"	3-1/2"	6" FLG	1" NPT
HEH-8F	20"	17"	3-7/8"	8" FLG	1-1/2" NPT
HEH-10F	24"	19-3/4"	6"	10" FLG	2" NPT
HEH-12F	24"	21"	6"	12" FLG	2" NPT
HEH-14F	30"	23-7/8"	5-5/8"	14" FLG	2" NPT
HEH-16F	30"	24-3/8"	6"	16" FLG	3" NPT
HEH-18F	42"	34-7/8"	7"	18" FLG	3" NPT
HEH-20F	42"	37"	8"	20" FLG	3" NPT
HEH-24F	60"	49-1/2"	8"	24" FLG	4" NPT

B BRYAN STEAM

783 N. CHILI AVE.
PERU, INDIANA 46970

DWG. NO: A50869
FORM NO: 2209