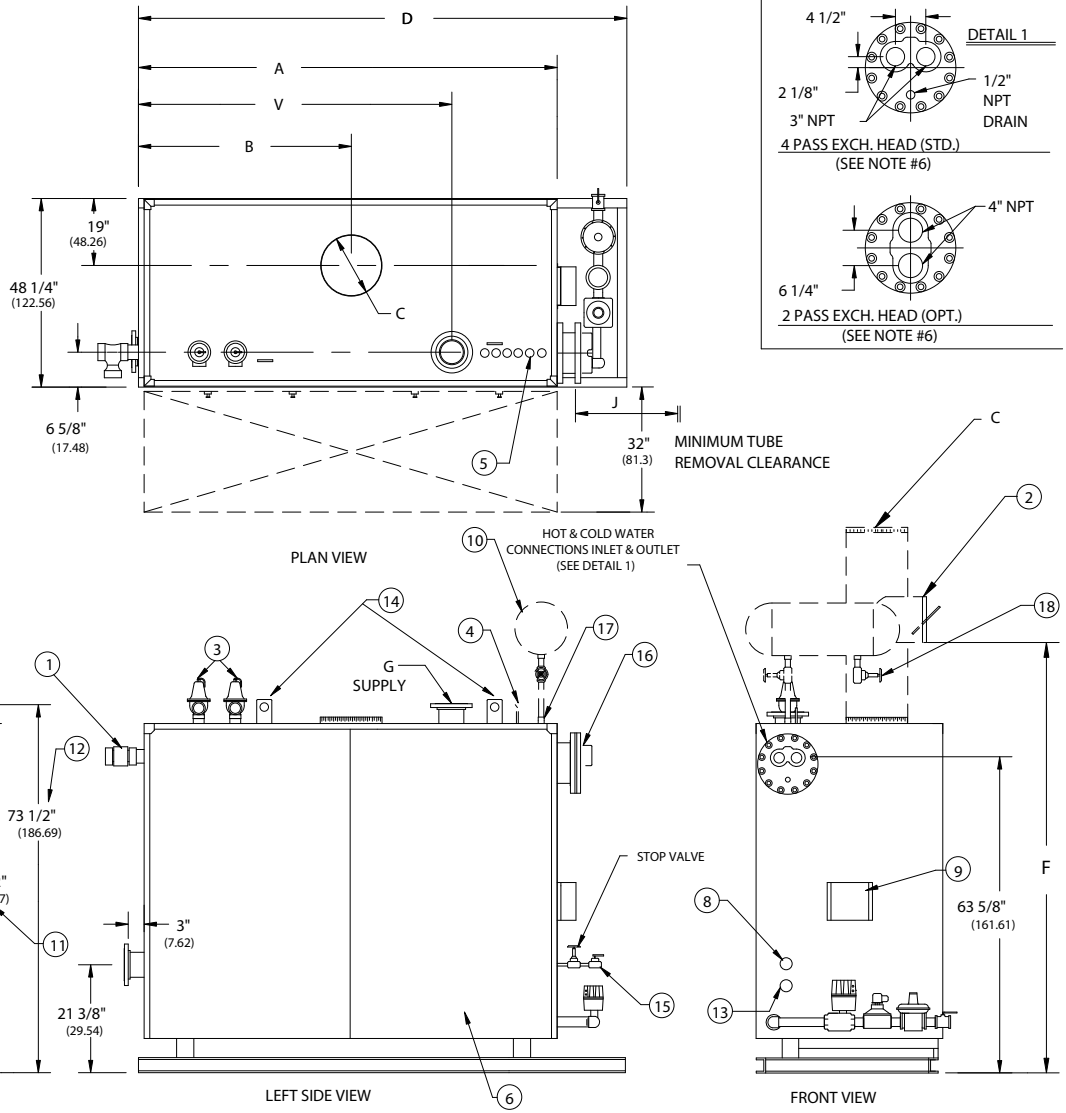


**K SERIES ATMOSPHERIC GAS  
INDIRECT WATER HEATERS  
(K350WT-K400WT)**

EFFECTIVE DATE: 05/05/03  
REPLACES: 09/9/97

**NOTES:**

1. ALL DIMENSIONS ARE IN INCHES THOSE IN PARENTHESES ARE CENTIMETERS.
2. LOCATION DIMENSIONS ARE ALL ±1/2".
3. GAS TRAIN AND CONTROL WILL VARY DEPENDING ON JOB SPECIFICATIONS & CONDITIONS.
4. DIMENSIONS ARE SUBJECT TO CHANGE WITHOUT NOTICE. CONSULT FACTORY FOR CERTIFIED DIMENSIONS.
5. ALL FLANGES ARE 150# UNLESS OTHERWISE NOTED, FLANGES TO STRADDLE CENTER LINE.
6. SEE FORMS 1594 AND 1595 FOR FLOW RATES AND PRESSURE DROPS OF 2 PASS AND 4 PASS EXCHANGERS



1. PROBE TYPE LWCO-	6. JACKET ACCESS PANELS	11. HEIGHT OVER JACKET	16. INDIRECT HEAT EXCHANGER
2. BARO DRAFT CONTROL (LOOSE)	7.	12. HEIGHT OVER SUPPLY	17. EXPANSION TANK CONN
3. RELIEF VALVE'S	8. CLNOUT./INSP. OPNG.-1 1/2"NPT	13. DRAIN CONN 2" NPT	18. DRAIN VALVE (EXP TANK)
4. PRESS/TEMP GAUGE	9. ELEC. ENCLOSURE-	14. LIFTING LUGS	19.
5. CONTROL TAP 3/4" NPT	10. EXP. TANK (SHIP LOOSE)	15. FILL VALVE	20.

BOILER MODEL	K350WT	K400WT
A-LENGTH OVER JACKET	107 1/4" (272.42)	117" (297.13)
B-FLUE LOCATION	54 1/8" (137.48)	59" (149.86)
C-FLUE DIAMETER	24" (60.96)	24" (60.96)
D-LENGTH OVER BASE	123 1/4" (313.06)	133" (337.82)
F-HEIGHT TO BAROMETRIC	97 1/2" (247.65)	97 1/2" (247.65)
G-SPACE HEATING SUPPLY AND RETURN CONN (IF USED)	4" FLG (10.16)	6" FLG (15.24)
J-HEAT EXCH REMOVAL CLEARANCE	105" (266.70)	115" (292.10)
V-FLOW NOZZLE LOCATION	75 3/4" (192.41)	85 1/2" (217.17)



783 NORTH CHILI AVE  
PERU, INDIANA 46970

ORDER NO.:	
ORDER REV. NO.:	
FORM NO.:	1675

# K SERIES ATMOSPHERIC GAS INDIRECT WATER HEATERS

BOILER MODEL		K350	K400
INPUT	MBH	3,500	4,000
	(KW)	1,025.5	1,172.0
OUTPUT*	MBH	2,800.0	3,200.0
	(KW)	820.4	937.6
BOILER HORSEPOWER	HP	84	96
	(KW)	823	941
TUBE DIAMETER	INCHES	1.50	1.50
	(CM)	3.81	3.81
NUMBER OF TUBES		53	59
PRESSURE VESSEL			
VOLUME	GAL	146	160
	(L)	552.6	605.6
HEATING SURFACE	SQ FT	424	480
	(SQ M)	39.4	44.6
INDIRECT HEAT EXCHANGER			
UTF(###)-(##)-(#)	INCHES	105	115
	(CM)	267	292
OPERATING WEIGHT	LBS	6,040	6,555
	(KG)	2,739.7	2,973.3
SHIPPING WEIGHT	LBS	4,820	5,220
	(KG)	2,186.4	2,367.8
RELIEF VALVE TYPICAL - 30 PSIG (206.8 KPA)			
QUANTITY		1	1
SIZE	INCHES	2 x 2½	2 x 2½
	(CM)	5.08 x 6.35	5.08 x 6.35
CAPACITY-TOTAL	MBH	5,250	5,250
	(KW)	1,538.2	1,538.2
RELIEF VALVE TYPICAL - 125 PSIG (861.8 KPA)			
QUANTITY		1	1
SIZE	INCHES	1¼ x 1¼	1¼ x 1¼
	(CM)	3.17 x 3.17	3.17 x 3.17
CAPACITY-TOTAL	MBH	5,370	5,370
	(KW)	1,573.4	1,573.4

\* Output based on nominal 80% of input. Actual combustion efficiencies may vary.  
 (###) - - Indicates number of passes.  
 (##) - - Indicates number of tubes.  
 (#) - - Indicates length of exchanger.