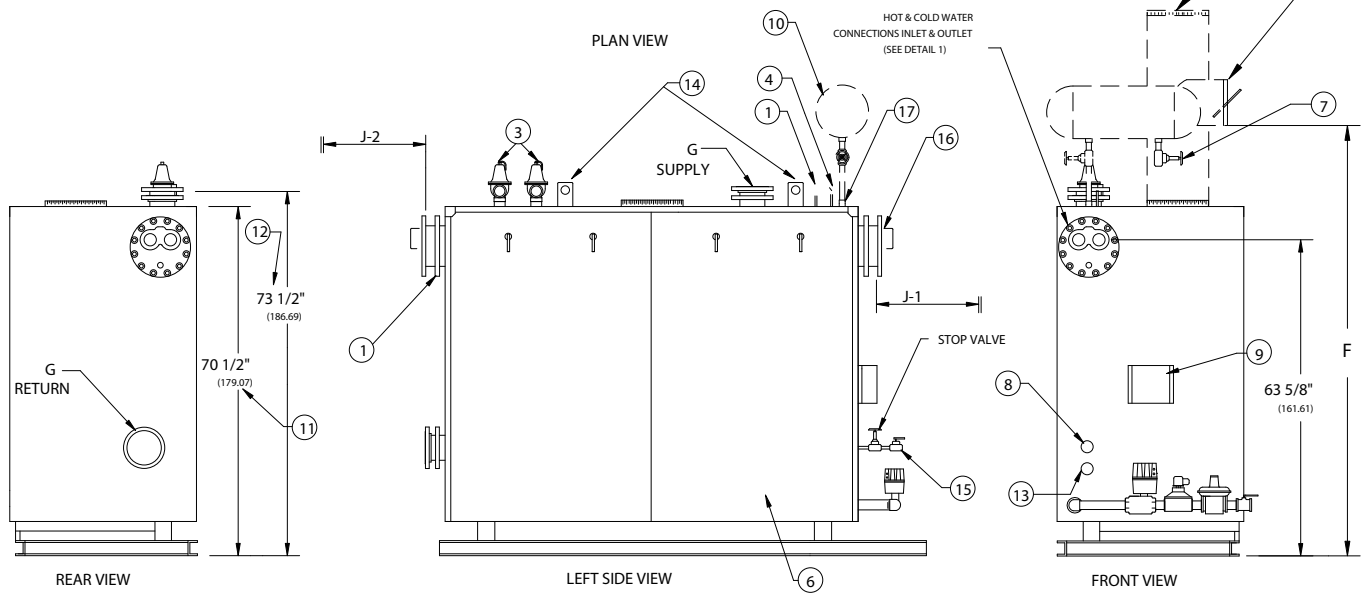
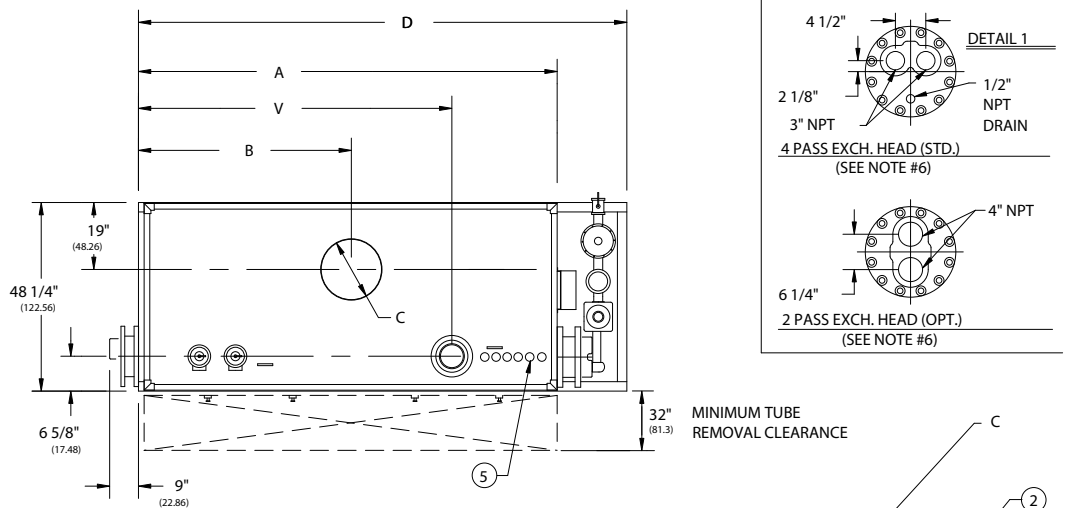


**K SERIES ATMOSPHERIC GAS
INDIRECT WATER HEATERS (K450WT-K650WT)**

EFFECTIVE DATE: 05/05/03
REPLACES: 09/11/97

NOTES:

1. ALL DIMENSIONS ARE IN INCHES THOSE IN PARENTHESES ARE CENTIMETERS.
2. LOCATION DIMENSIONS ARE ALL ±1/2".
3. GAS TRAIN AND CONTROL WILL VARY DEPENDING ON JOB SPECIFICATIONS & CONDITIONS.
4. DIMENSIONS ARE SUBJECT TO CHANGE WITHOUT NOTICE. CONSULT FACTORY FOR CERTIFIED DIMENSIONS.
5. ALL FLANGES ARE 150# UNLESS OTHERWISE NOTED, FLANGES TO STRADDLE CENTER LINE.
6. SEE FORMS 1594 AND 1595 FOR FLOW RATES AND PRESSURE DROPS OF 2 PASS AND 4 PASS EXCHANGERS



- | | | | |
|-------------------------------|----------------------------------|------------------------|-----------------------------|
| 1. PROBE TYPE LWCO- | 6. JACKET ACCESS PANELS | 11. HEIGHT OVER JACKET | 16. INDIRECT HEAT EXCHANGER |
| 2. BARO DRAFT CONTROL (LOOSE) | 7. DRAIN VALVE (EXP TANK) | 12. HEIGHT OVER SUPPLY | 17. EXPANSION TANK CONN |
| 3. RELIEF VALVE | 8. CLNOUT./INSP. OPNG.-1 1/2"NPT | 13. DRAIN CONN 2" NPT | 18. |
| 4. PRESS/TEMP GAUGE | 9. ELEC. ENCLOSURE- | 14. LIFTING LUGS | 19. |
| 5. CONTROL TAP 3/4" NPT | 10. EXP. TANK (SHIP LOOSE) | 15. FILL VALVE | 20. |

BOILER MODEL	K450WT	K500WT	K550WT	K600WT	K650WT
A-LENGTH OVER JACKET	129 3/4" (329.57)	142 1/2" (361.95)	155 1/2" (294.97)	165" (419.10)	178" (452.12)
B-FLUE LOCATION	65 3/8" (166.05)	71 3/4" (182.25)	78 1/4" (198.76)	83" (210.82)	89 1/2" (227.33)
C-FLUE DIAMETER	26" (66.04)	28" (71.12)	30" (76.20)	30" (76.20)	30" (76.20)
D-LENGTH OVER BASE	145 3/4" (370.21)	158 1/2" (402.59)	171 1/2" (435.61)	181" (459.74)	194" (492.76)
F-HEIGHT TO BAROMETRIC	99 1/2" (252.73)	101 1/2" (257.81)	103 1/2" (262.89)	103 1/2" (262.89)	103 1/2" (262.89)
SPACE HEATING SUPPLY G-AND RETURN CONN (IF USED)	6" FLG (15.24)	6" FLG (15.24)	6" FLG (15.24)	6" FLG (15.24)	6" FLG (15.24)
V-FLOW NOZZLE LOCATION	98 1/4" (249.56)	111" (281.94)	124" (314.96)	133 1/2" (339.09)	146 1/2" (372.11)
J1-HEAT EXCH REMOVAL CLEARANCE	75" (190.50)	75" (190.50)	88" (223.52)	88" (223.52)	101" (256.64)
J2-HEAT EXCH REMOVAL CLEARANCE	75" (190.50)	88" (223.52)	88" (223.52)	101" (256.64)	101" (256.64)



783 NORTH CHILI AVE
PERU, INDIANA 46970

ORDER NO.:
ORDER REV. NO.:
FORM NO.: 1768

K SERIES ATMOSPHERIC GAS INDIRECT WATER HEATERS

BOILER MODEL		K450	K500	K550	K600	K650
INPUT	MBH	5,000	5,000	5,500	6,000	6,500
	(KW)	1,465.0	1,465.0	1,611.5	1,758.0	1,904.5
OUTPUT*	MBH	4,000	4,000	4,400	4,800	5,200
	(KW)	1,172.0	1,172.0	1,289.2	1,406.4	1,523.6
BOILER HORSEPOWER	HP	119	119	131	143	155
	(KW)	1,171.0	1,171.0	1,288.1	1,405.2	1,522.3
TUBE DIAMETER	INCHES	1.50	1.50	1.50	1.50	1.50
	(CM)	3.81	3.81	3.81	3.81	3.81
NUMBER OF TUBES		67	75	83	89	97
PRESSURE VESSEL						
VOLUME	GAL	179	198	217	232	251
	(L)	677.5	749.4	821.3	878.1	950.0
HEATING SURFACE	SQ FT	540	600	661	717	777
	(SQ M)	50.2	55.8	61.4	66.6	72.2
INDIRECT HEAT EXCHANGER						
HEAT EXCHANGER #1 UTF(###)-(##)-(#)	INCHES	66	79	79	92	92
	(CM)	167.6	200.7	200.7	233.7	233.7
HEAT EXCHANGER #2 UTF(###)-(##)-(#)	INCHES	66	66	79	79	92
	(CM)	167.6	167.6	200.7	200.7	233.7
OPERATING WEIGHT	LBS	7,692	8,441	9,189	9,974	10,793
	(KG)	3,489.2	3,828.7	4,168.2	4,524.3	4,895.5
SHIPPING WEIGHT	LBS	6,200	6,790	7,380	8,040	8,700
	(KG)	2,812.3	3,079.9	3,347.6	3,646.9	3,946.3
RELIEF VALVE TYPICAL - 30 PSIG (206.8 KPA)						
QUANTITY		2	2	2	2	2
SIZE	INCHES	1 ¼ x 2	2 x 2 ½	2 x 2 ½	2 x 2 ½	2 x 2 ½
	(CM)	3.17 x 5.08	5.08 x 6.35	5.08 x 6.35	5.08 x 6.35	5.08 x 6.35
CAPACITY-TOTAL	MBH	5,800	10,500	10,500	10,500	10,500
	(KW)	1,699.4	3,076.5	3,076.5	3,076.5	3,076.5
RELIEF VALVE TYPICAL - 125 PSIG (861.8 KPA)						
QUANTITY		1	1	2	2	2
SIZE	INCHES	1 ½ x 1 ½	1 ½ x 1 ½	1 ¼ x 1 ¼	1 ¼ x 1 ¼	1 ¼ x 1 ¼
	(CM)	3.81 x 3.81	3.81 x 3.81	3.17 x 3.17	3.17 x 3.17	3.17 x 3.17
CAPACITY-TOTAL	MBH	6,460	6,460	10,740	10,740	10,740
	(KW)	1,892.8	1,892.8	3,146.8	3,146.8	3,146.8

* Output based on nominal 80% of input. Actual combustion efficiencies may vary.
 (###) - - Indicates number of passes.
 (##) - - Indicates number of tubes.
 (#) - - Indicates length of exchanger.