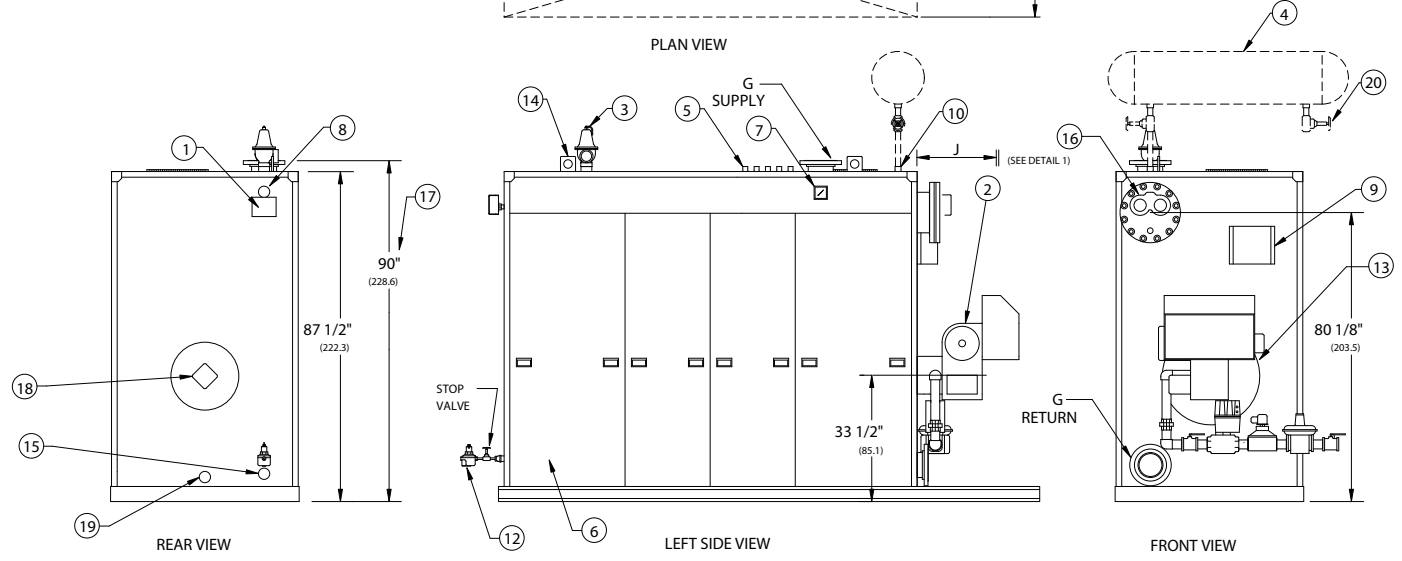
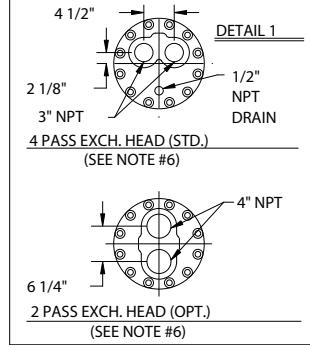
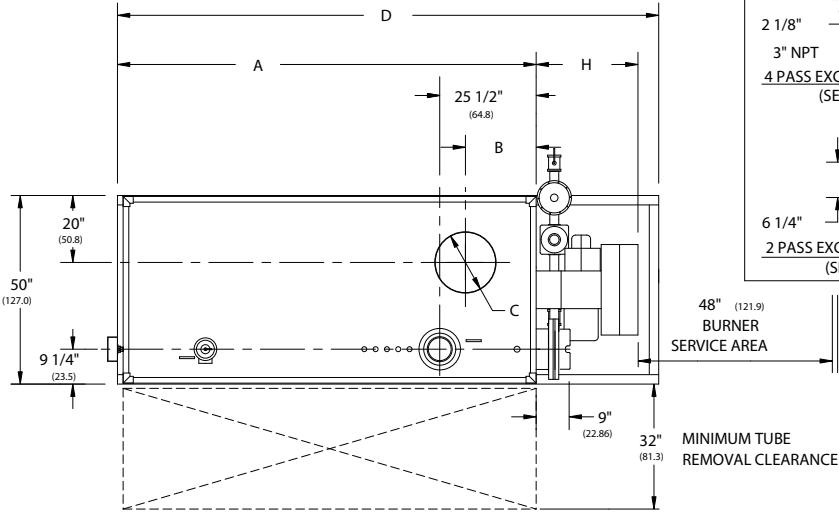


RV SERIES FORCED DRAFT INDIRECT
WATER HEATERS (RV350 - RV450)

EFFECTIVE DATE: 3/15/04
REPLACES: 7/24/03

NOTES:

1. ALL DIMENSIONS ARE IN INCHES. THOSE IN PARENTHESES ARE CENTIMETERS.
2. LOCATION DIMENSIONS ARE ALL $\pm 1/2"$.
3. GAS TRAIN, CONTROL AND BURNER CONFIGURATION WILL VARY DEPENDING ON JOB SPECIFICATIONS & CONDITIONS.
4. DIMENSIONS ARE SUBJECT TO CHANGE WITHOUT NOTICE. CONSULT FACTORY FOR CERTIFIED DIMENSIONS.
5. ALL FLANGES ARE 150# UNLESS OTHERWISE NOTED.
6. SEE FORMS 1594 AND 1595 FOR FLOW RATES AND PRESS. DROPS OF 2 AND 4 PASS HEAT EXCHANGERS.



1. PROBE TYPE L.W.C.O.-	6. JACKET ACCESS PANELS	12. FILL VALVE	16. INDIRECT HEAT EXCHANGER
2. FORCED DRAFT BURNER	7. PRESS./TEMP. GAUGE	13. OIL PUMP LOCATION	17. HEIGHT OVER SUPPLY
3. RELIEF VALVE	8. CLNOUT./INSP. OPNG.-1 1/2"NPT	14. LIFTING LUGS	18. FLAME OBSERVATION PORT
4. EXPANSION TANK (LOOSE)	9. ELEC. ENCLOSURE-	15. DRAIN CONNECTION 2" NPT	19. COMB. CHAMBER DRAIN 1" NPT
5. CONTROL TAPPINGS 3/4" NPT	10. VENT/EXP. TANK CONN. 1" NPT		20. DRAIN VALVE (BY OTHERS)

BOILER MODEL	RV350WT	RV400WT	RV450WT
A-LENGTH OVER JACKET	98" (248.9)	111" (281.9)	120 1/2" (306.1)
B-FLUE LOCATION	16" (40.6)	18 3/4" (47.6)	18 3/4" (47.6)
C-FLUE DIAMETER	16" (40.6)	16" (40.6)	16" (40.6)
D-LENGTH OVER BASE	130 1/2" (331.5)	143 1/2" (364.5)	153 1/4" (389.3)
G-SUPPLY / RETURN NOZZLE SIZE	4" FLG (10.2)	6" FLG (15.2)	6" FLG (15.2)
H-BURNER EXTENSION	CONSULT FACTORY FOR BURNER EXTENSION APPLICATIONS		
J-HT. EXCH. REMOVAL CLR.	101" (256.5)	114" (289.6)	124" (315.0)



783 NORTH CHILI AVE
PERU, INDIANA 46970

ORDER NO.:	
ORDER REV. NO.:	
FORM NO.:	1769

RV SERIES FORCED DRAFT INDIRECT WATER HEATERS

BOILER MODEL		RV350	RV400	RV450
INPUT	MBH	3,500	4,000	4,500
	(KW)	1,025.5	1,172.0	1,318.5
OUTPUT*	MBH	2,800	3,200	3,600
	(KW)	820.4	937.6	1,054.8
BOILER HORSEPOWER	HP	84	96	108
	(KW)	819.7	936.8	1,053.9
TUBE DIAMETER	INCHES	1.50	1.50	1.50
	(CM)	3.81	3.81	3.81
NUMBER OF TUBES		47	55	61
PRESSURE VESSEL				
VOLUME	GAL	146	169	181
	(L)	552.6	639.7	685.1
HEATING SURFACE	SQ FT	419	490	544
	(SQ M)	38.9	45.5	50.6
INDIRECT HEAT EXCHANGER				
UTF2-68-(#) OR UTF4-64-(#)	INCHES	92	105	115
	(CM)	233.7	266.7	292.1
OPERATING WEIGHT	LBS	9,317	9,729	10,309
	(KG)	4,226.3	4,413.1	4,676.2
SHIPPING WEIGHT	LBS	8,100	8,320	8,800
	(KG)	3,674.2	3,774.0	3,991.7
RELIEF VALVE TYPICAL - 30 PSIG (206.8 KPA)				
QUANTITY		(1) 740	(1) 740	(2) 741
SIZE	INCHES	2 x 2½	2 x 2½	1½ x 2
	(CM)	5.08 x 6.35	5.08 x 6.35	3.81 x 5.08
CAPACITY-TOTAL	MBH	5,250	5,250	5,800
	(KW)	1,538.2	1,538.2	1,699.4
RELIEF VALVE TYPICAL - 125 PSIG (861.8 KPA)				
QUANTITY		(1) 174A	(1) 174A	(1) 174A
SIZE	INCHES	1¼ x 1¼	1¼ x 1¼	1½ x 1½
	(CM)	3.17 x 3.17	3.17 x 3.17	3.81 x 3.81
CAPACITY-TOTAL	MBH	5,370	5,370	6,460
	(KW)	1,573.4	1,573.4	1,892.8

* Output based on nominal 80% of input. Actual combustion efficiencies will vary and are fuel dependant.
 (#) - - Indicates length of exchanger.