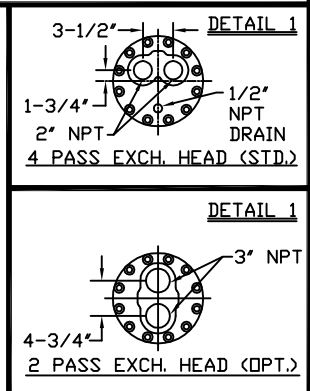
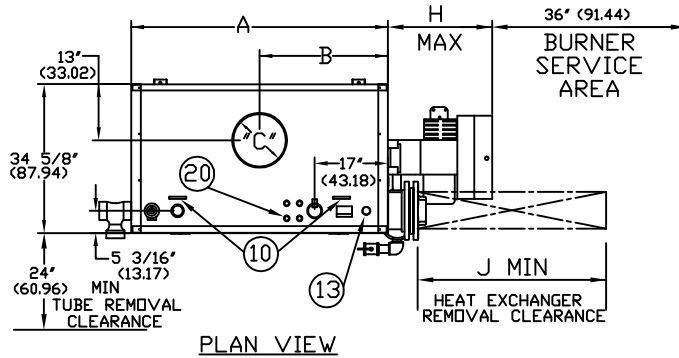


CLM SERIES FORCED DRAFT INDIRECT WATER HEATERS (CLM120-CLM300)

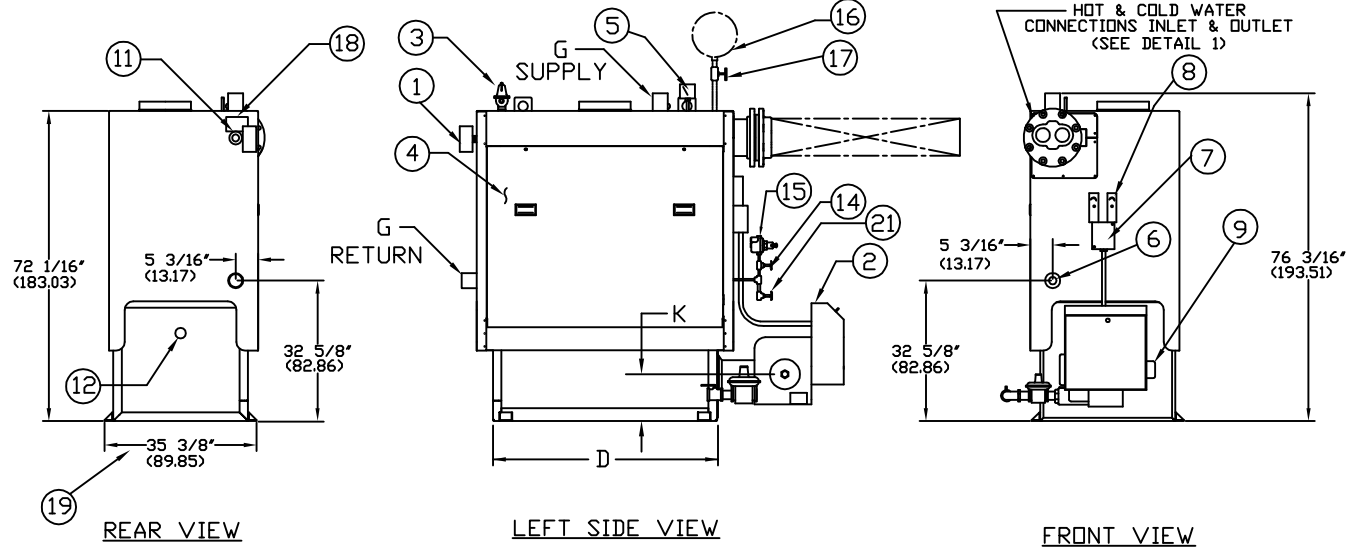
EFFECTIVE DATE: 07/09/15
REPLACES: 1/24/13

NOTES:

1. ALL DIMENSIONS ARE IN INCHES THOSE IN PARENTHESES ARE CENTIMETERS.
2. LOCATION DIMENSIONS ARE ALL ±1/2".
3. GAS TRAIN AND CONTROL LOCATION WILL VARY DEPENDING ON JOB SPECIFICATIONS & CONDITIONS.
4. DIMENSIONS ARE SUBJECT TO CHANGE WITHOUT NOTICE. CONSULT FACTORY FOR CERTIFIED DIMENSIONS.
5. COIL HEAD WILL ADD 1 9/16" TO OVERALL WIDTH, AND 8 11/16" TO LENGTH.



MODEL	K
120-240	12"
270-300	15"



- | | | | |
|----------------------------------|-----------------------------------|-------------------------------|-------------------------|
| 1. PROBE TYPE L.W.C.O.- | 7. ELEC. ENCLOSURE- | 13. 1" (2.54) EXP TANK CONN | 19. WIDTH OVER MTG LUGS |
| 2. FORCED DRAFT BURNER | 8. AQUASTATS | 14. STOP VALVE | 20. CONTROL CONNECTIONS |
| 3. RELIEF VALVE | 9. OIL PUMP LOCATION | 15. FILL VALVE | 21. DRAIN VALVE |
| 4. TUBE ACCESS PANEL | 10. LIFTING LUG | 16. EXP TANK (SHIP LOOSE) | |
| 5. PRESS./TEMP. GAUGE | 11. CLNDOUT./INSP. OPNG-1 1/4"NPT | 17. 1" GATE VALVE (BY OTHERS) | |
| 6. CLNDOUT./INSP. OPNG-1 1/2"NPT | 12. FLAME OBSERVATION PORT | 18. ASME NAME PLATE | |

BOILER MODEL	CLM120WT	CLM150WT	CLM180WT	CLM210WT	CLM240WT	CLM270WT	CLM300WT
A-LENGTH OVER JACKET	50 11/16" (128.74)	59 11/16" (151.60)	69 1/8" (175.57)	78 3/8" (199.07)	88" (223.52)	97" (246.38)	106 5/8" (270.82)
B-FLUE LOCATION	25 5/16" (64.29)	29 13/16" (75.72)	34 9/16" (87.78)	39 3/16" (99.53)	44" (111.76)	48 1/2" (123.19)	53 5/16" (135.41)
C-FLUE DIAMETER	10" (25.40)	12" (30.48)	14" (35.56)	14" (35.56)	16" (40.64)	16" (40.64)	16" (40.64)
D-LENGTH OVER BASE	43 1/8" (109.53)	52 3/8" (133.03)	61 5/8" (156.52)	70 7/8" (180.02)	80 1/8" (203.51)	89 7/16" (219.54)	99 1/16" (251.61)
G-SUPPLY/ RETURN NOZZLE SIZE	3" (7.62)	3" (7.62)	3" (7.62)	3" (7.62)	3" (7.62)	3" (7.62)	3" (7.62)
H-BURNER EXTENSION	CONSULT FACTORY FOR BURNER EXTENSION APPLICATIONS						
J- HEAT EXCHANGER REMOVAL CLEARANCE	54" (137.2)	63" (160.0)	72" (185.4)	81" (205.7)	91" (231.14)	100" (254)	109" (276.86)

CLM SERIES FORCED DRAFT INDIRECT WATER HEATERS

BOILER MODEL		CLM120	CLM150	CLM180	CLM210	CLM240	CLM270	CLM300
INPUT	MBH	1,200	1,500	1,800	2,100	2,400	2,700	3,000
	(KW)	351.6	439.5	527.4	615.3	703.2	791.1	879.0
OUTPUT*	MBH	960	1,200	1,440	1,680	1,920	2,160	2,400
	(KW)	281.3	351.6	421.9	492.2	562.6	632.9	703.2
BOILER HORSEPOWER	HP	29	36	43	50	57	65	72
	(KW)	281.0	351.3	421.6	491.8	562.1	632.4	702.6
TUBE DIAMETER	INCHES	1.00	1.00	1.00	1.00	1.00	1.00	1.00
	(CM)	2.54	2.54	2.54	2.54	2.54	2.54	2.54
NUMBER OF TUBES		36	45	54	63	72	81	90
PRESSURE VESSEL								
VOLUME	GAL	38	47	55	63	71	80	88
	(L)	143.8	177.9	208.2	238.5	268.7	302.8	333.1
HEATING SURFACE	SQ FT	145	180	215	251	287	322	360
	(SQ M)	13.5	16.7	20.0	23.3	26.7	29.9	33.5
INDIRECT HEAT EXCHANGER		UT8Fx-xx-54	UT8Fx-xx-63	UT8Fx-xx-72	UT8Fx-xx-81	UT8Fx-xx-91	UT8Fx-xx-100	UT8Fx-xx-109
	INCHES	54	63	73	81	91	100	109
	(CM)	137.2	160.0	185.4	205.7	231.1	254.0	276.9
OPERATING WEIGHT	LBS	3,517	3,992	4,509	5,000	5,492	6,192	6,267
	(KG)	1,595.3	1,810.8	2,045.1	2,268.2	2,491.2	2,808.8	2,842.7
SHIPPING WEIGHT	LBS	3,200	3,600	4,050	4,475	4,900	5,525	5,533
	(KG)	1,451.5	1,633.0	1,837.1	2,029.9	2,222.6	2,506.1	2,509.8

* Output based on nominal 80% of input. Actual combustion efficiencies will vary and are fuel dependant.
 x Number of passes.
 xx Number of tubes.