

HORIZONTAL INDIRECT WATER
PAK POWER FIRED, SETTING A.H
DR, AB, CLM & RV SERIES BOILERS

EFFECTIVE DATE: 05/05/04
REPLACES:

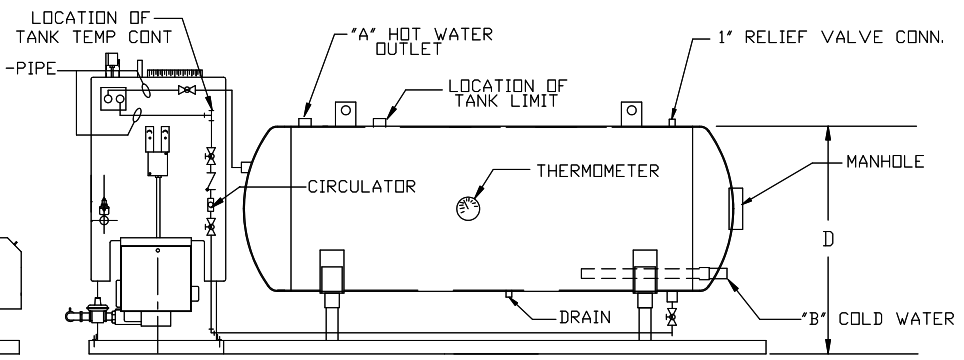
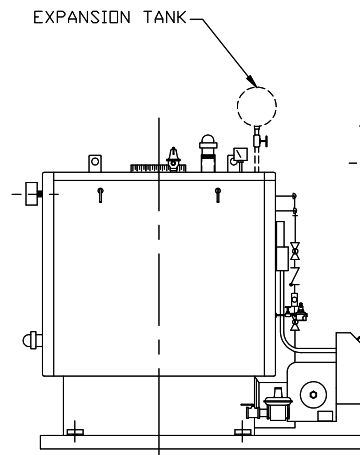
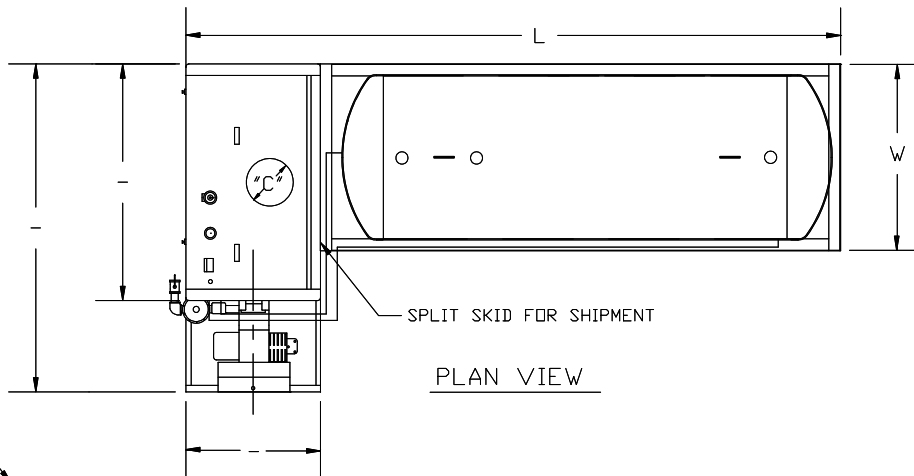
SPECIFICATIONS

WATER HEATER INPUT - BTU
RECOVERY CAP - GPH - TO -°F
FUEL GAS/OIL
HEAT EXCHANGER MODEL -
TANK STORAGE CAPACITY - GALLONS
TANK MAX. WORKING PRESS. 150 PSI
TANK LINING -
CIRCULATOR MODEL -
CIRCULATOR VOLTAGE -
CIRCULATOR HORSEPOWER -
FLOW RATE - GPM AT - FT DROP
TANK SIZE -

NOTE:

PIPING CONFIGURATION WILL VARY DEPENDING ON JOB SPECIFICATIONS & CONDITIONS.

DIM'S	
A	-
B	-
C	-
D	-
L	-
W	-



BRYAN BOILERS

783 NORTH CHILLI AVE
PERU, INDIANA 46970

FORM# 2260