

Filling Methods for Bryan WP or WT Indirect Heaters With Fill-trol Expansion Tanks

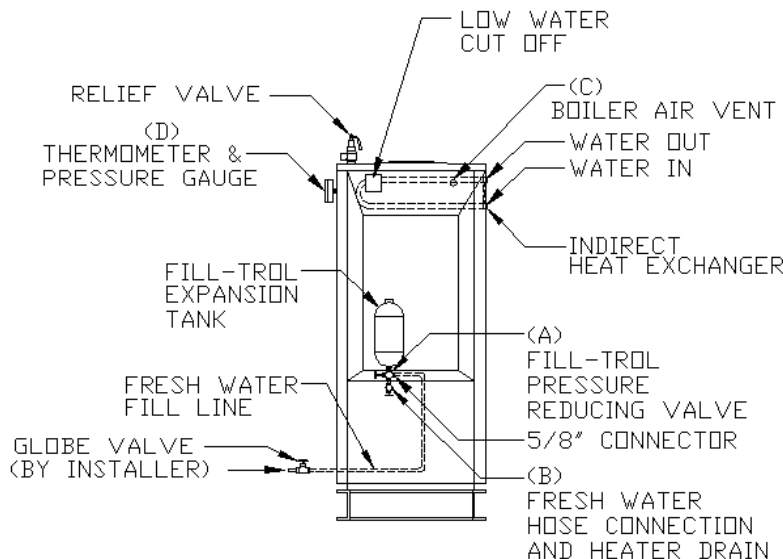
The Bryan WP or WT Indirect Heater utilizes primary water in the boiler shell to act as a heat transfer medium to the pool or potable water flowing through the separate internally mounted heat exchanger. Therefore, we recommend that the boiler be filled with fresh city water. The following two methods of accomplishing this are:

Fill Method # 1 (Preferred) Permanent Connection

1. Do not turn on electrical power to heater until boiler is properly filled with water.
2. Connect fresh city water line to Fill-trol valve "A".
3. Close drain valve "B".
4. Open boiler vent "C".
5. Open Fill-trol valve "A", allowing water to run into the boiler. When the water runs out of boiler vent "C", close vent "C" and leave Fill-trol valve "A" open. This will fill the boiler automatically to approximately 12 psig, as read on gauge "D".
6. Fill-trol valve "A" is kept open at all times so that water remains in the boiler under proper pressure.
7. (Pool applications only) Pool temperature control is set to desired pool temperature and the boiler high limit is to be set at 160°F.
8. Burner can now be operated as per burner and boiler I&O Instruction Manuals.

Fill Method #2 Temporary Connection

1. Do not turn on electrical power to heater until boiler is properly filled with water.
2. Connect the male end of a garden hose to the hose adapter attached to the drain "B".
3. Close Fill-trol valve "A".
4. Open boiler vent "C".
5. Open drain valve "B", allowing water to run into boiler.
6. When water runs out of boiler vent "C", close vent "C" and leave drain valve "B" open until a water pressure of 12 psig is obtained on gauge "D".
7. Close drain valve "B" and disconnect hose.
8. (Pool applications only) Pool temperature control is set to desired pool temperature and the boiler high limit is to be set at 160°F.
9. Burner can now be operated as per burner and boiler I&O Instruction Manuals.



Draining the Boiler

Note: If indirect heater is installed in freezing areas, it is necessary to completely drain both the primary boiler water and the indirect heat exchanger. Open vent valve "C", drain valve

**Filling Methods for Bryan WP or WT Indirect Heaters
With Fill-trol Expansion Tanks**

“B”, and disconnect fresh water fill line from Fill-trol valve “A”. Drain water from relief valve. Disconnect unions in piping to the indirect heat exchanger.