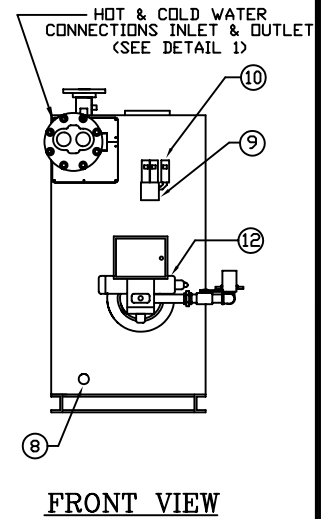
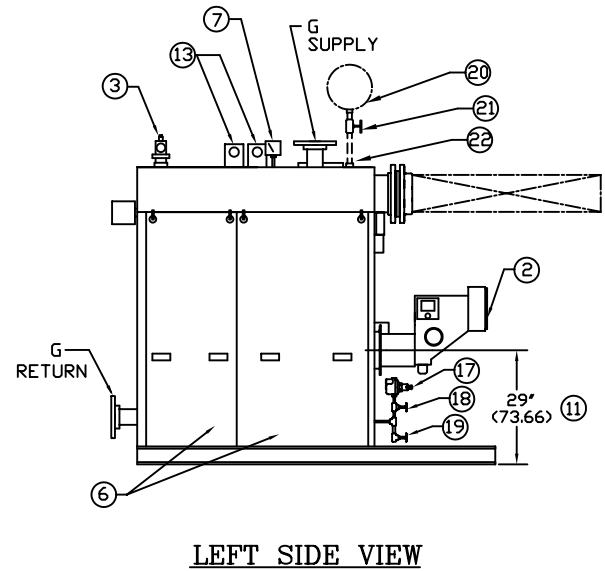
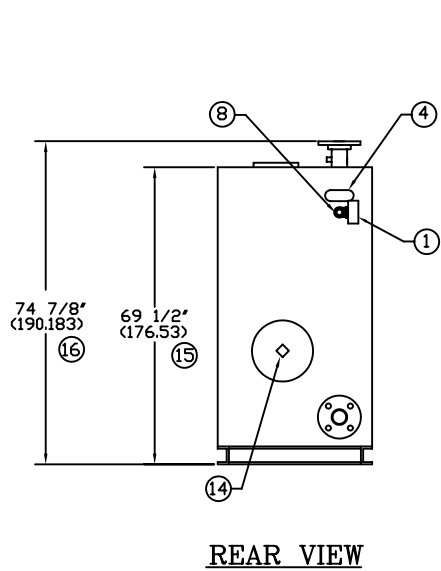
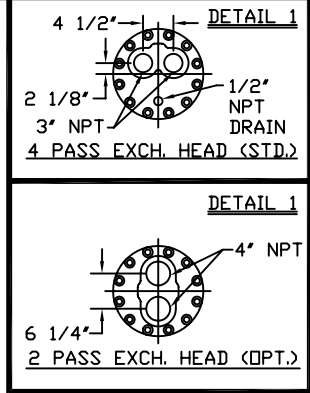
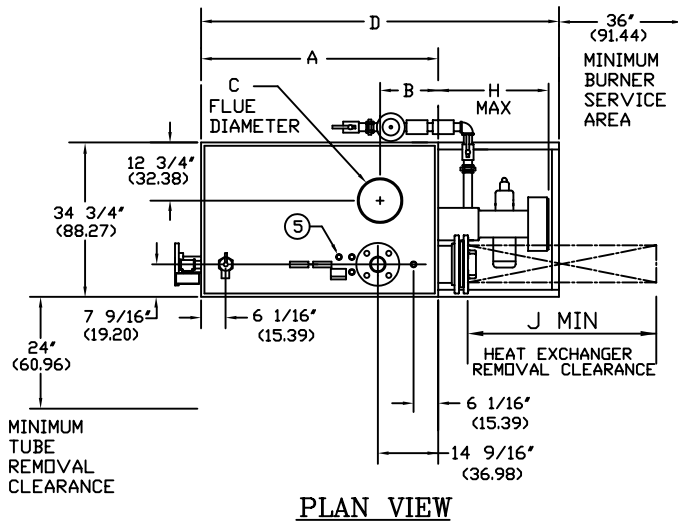


# AB SERIES FORCED DRAFT INDIRECT WATER HEATERS (AB90-AB300)

EFFECTIVE DATE: 8/12/10  
REPLACES: 11/3/09

**NOTES:**

1. ALL DIMENSIONS ARE IN INCHES THOSE IN PARENTHESES ARE CENTIMETERS.
2. LOCATION DIMENSIONS ARE ALL  $\pm 1/2"$ .
3. GAS TRAIN, CONTROL AND BURNER CONFIGURATION WILL VARY DEPENDING ON JOB SPECIFICATIONS & CONDITIONS.
4. DIMENSIONS ARE SUBJECT TO CHANGE WITHOUT NOTICE. CONSULT FACTORY FOR CERTIFIED DIMENSIONS.
5. ALL FLANGES ARE 150# UNLESS OTHERWISE NOTED, FLANGES TO STRADDLE CENTER LINE.
6. AB 90 THRU AB 150 WILL HAVE ONLY (1) LIFT LUG. AB 200 THRU AB 300 WILL HAVE (2) LIFT LUGS.
7. COIL HEAD WILL ADD  $1\ 9/16"$  TO OVERALL WIDTH. AND  $8\ 11/16"$  TO LENGTH.



- |                         |                                  |                                 |                                 |
|-------------------------|----------------------------------|---------------------------------|---------------------------------|
| 1. PROBE TYPE L.W.C.O.- | 7. PRESS./TEMP. GAUGE            | 13. LIFTING LUG(S) (SEE NOTE 6) | 19. DRAIN VALVE                 |
| 2. FORCED DRAFT BURNER  | 8. CLNDUT./INSP. OPNG.-1 1/2"NPT | 14. FLAME OBSERVATION PORT      | 20. EXPANSION TANK (SHIP LOOSE) |
| 3. RELIEF VALVE         | 9. ELEC. ENCLOSURE-              | 15. HEIGHT OVER JACKET          | 21. 1" GATE VALVE (BY OTHERS)   |
| 4. ASME NAMEPLATE       | 10. AQUASTATS                    | 16. HEIGHT OVER SUPPLY          | 22. 1" (2.54) EXP TANK CONN.    |
| 5. CONTROL CONNECTION   | 11. BURNER CENTER LINE           | 17. FILL VALVE                  |                                 |
| 6. JACKET ACCESS PANELS | 12. OIL PUMP LOCATION            | 18. STOP VALVE                  |                                 |

BOILER MODEL	AB 90	AB 120	AB 150	AB 200	AB 250	AB 300
A-LENGTH OVER JACKET	44 15/16" (114.14)	54 3/16" (137.63)	63 1/2" (161.29)	78 15/16" (200.5)	94 7/16" (239.87)	108 13/16" (276.38)
B-FLUE LOCATION	12" (30.48)	12" (30.48)	12" (30.48)	16 1/2" (41.91)	15" (38.10)	15" (38.10)
C-FLUE DIAMETER	10" (25.40)	10" (25.40)	10" (25.40)	10" (25.40)	12" (30.48)	12" (30.48)
D-LENGTH OVER BASE	76" (193.04)	85 3/8" (216.83)	94 3/4" (240.67)	110" (279.40)	125 1/2" (318.77)	139 7/8" (355.28)
G-SUPPLY/RETURN NOZZLE SIZE	3" (7.62)	3" (7.62)	3" (7.62)	3" (7.62)	3" (7.62)	3" (7.62)
H-BURNER EXTENSION	CONSULT FACTORY FOR BURNER EXTENSION APPLICATIONS					
J-HEAT EXCHANGER REMOVAL CLEARANCE	48" (121.92)	57" (144.78)	66" (167.64)	82" (208.28)	97" (246.38)	110" (279.40)



783 NORTH CHILI AVE  
PERU, INDIANA 46970

ORDER NO.:	
ORDER REV. NO.:	
FORM NO.:	2373

# AB SERIES FORCED DRAFT GAS INDIRECT WATER HEATERS

BOILER MODEL		AB90	AB120	AB150	AB200	AB250	AB300
INPUT	MBH	900	1,200	1,500	2,000	2,500	3,000
	(KW)	263.7	351.6	439.5	586.0	732.5	879.0
OUTPUT*	MBH	752	1,002	1,253	1,670	2,088	2,505
	(KW)	220.2	293.6	367.0	489.3	611.6	734.0
BOILER HORSEPOWER	HP	22	30	37	50	62	75
	(KW)	220.0	293.3	366.7	488.9	611.1	733.4
TUBE DIAMETER	INCHES	1.00	1.00	1.00	1.00	1.00	1.00
	(CM)	2.54	2.54	2.54	2.54	2.54	2.54
NUMBER OF TUBES		26	35	44	59	74	88
PRESSURE VESSEL							
VOLUME	GAL	33	40	48	61	73	100
	(L)	124.9	151.4	181.7	230.9	276.3	378.5
HEATING SURFACE	SQ FT	113	148	184	244	303	360
	(SQ M)	10.5	13.8	17.1	22.7	28.2	33.5
INDIRECT HEAT EXCHANGER		UT8Fx-xx-47	UT8Fx-xx-56	UT8Fx-xx-65	UT8Fx-xx-81	UT8Fx-xx-96	UT8Fx-xx-109
	INCHES	47	56	65	81	96	109
	(CM)	119.4	142.2	165.1	205.7	243.8	276.9
OPERATING WEIGHT	LBS	2,388	2,717	3,120	3,759	4,347	4,860
	(KG)	1,083.2	1,232.4	1,415.2	1,705.1	1,971.8	2,204.5
SHIPPING WEIGHT	LBS	2,124	2,397	2,720	3,259	3,747	4,030
	(KG)	963.4	1,087.3	1,233.8	1,478.3	1,699.6	1,828.0

\* Output and Boiler HP based on an average natural gas combustion efficiency  
x Number of passes.  
xx Number of tubes.