

EFF. DATE 6/01/04

REPL. NEW

# ILLUSTRATED PARTS LIST

FORM: 2352

PAGE: CLM - FD - S - 1

FOR CLM-SERIES, FORCED DRAFT, STEAM BOILERS CLM120 THRU CLM300

---

## ORDERING INSTRUCTIONS

WHEN ORDERING PARTS FOR YOUR BRYAN BOILER OR HEATER,  
BE SURE TO INCLUDE THE FOLLOWING INFORMATION:

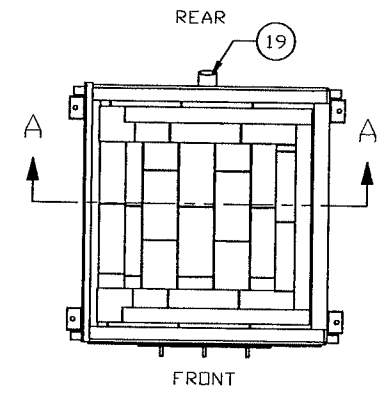
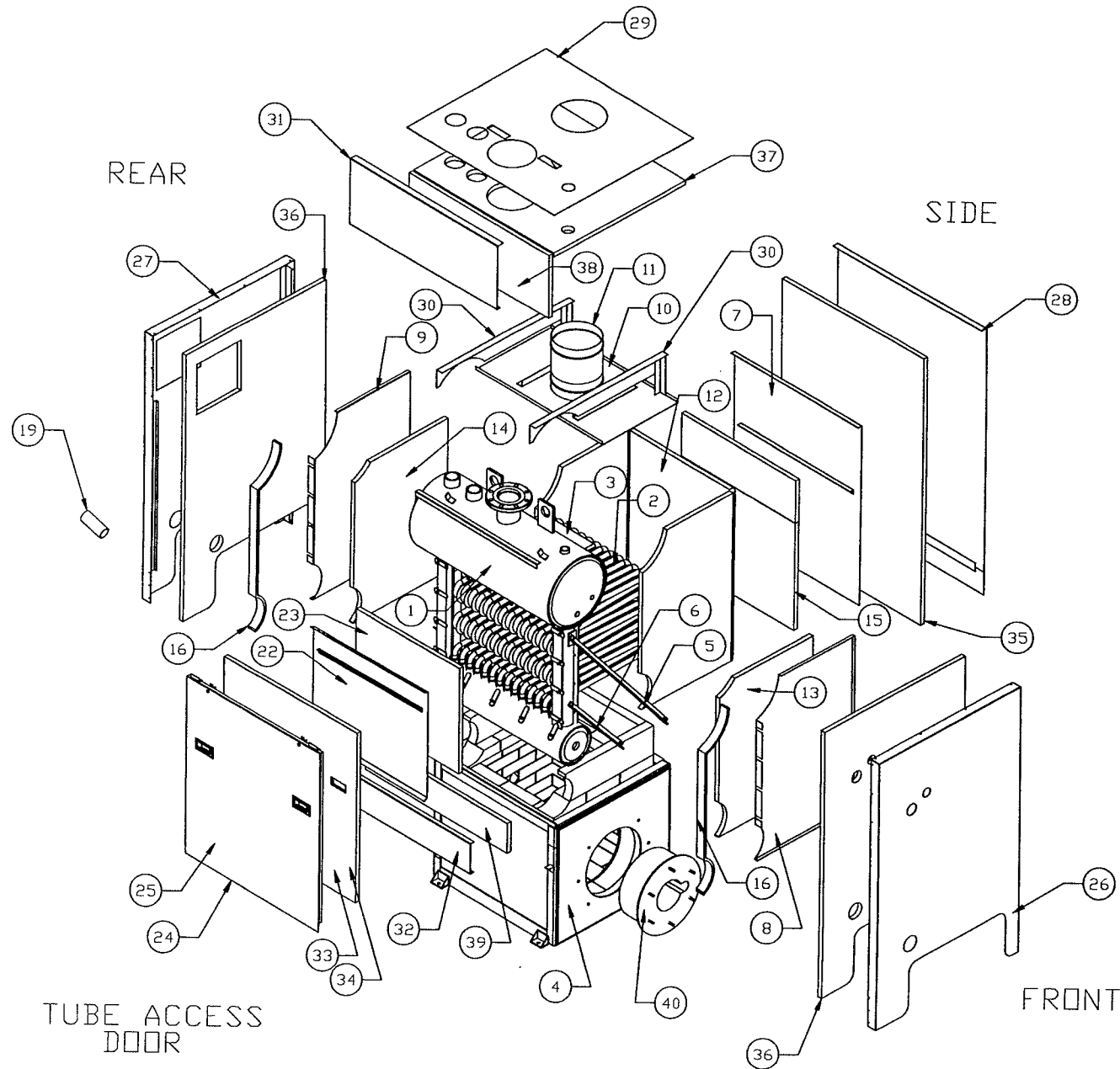
- |   |                          |
|---|--------------------------|
| 1. QUANTITY OF ITEMS REQUIRED                   | 4. BOILER MODEL NUMBER   |
| 2. PART NUMBER FROM THIS PARTS LIST (IF LISTED) | 5. BOILER SERIAL NUMBER  |
| 3. DESCRIPTION OF PART                          | 6. SHIPPING INSTRUCTIONS |

## EXAMPLE

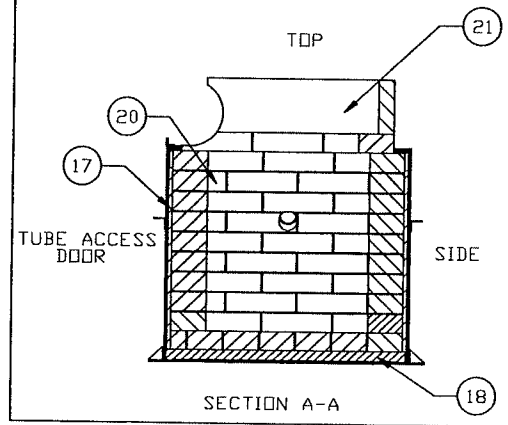
PLEASE FORWARD TO US:

<u>QTY.</u>	<u>PART NO.</u>	<u>DESCRIPTION</u>	<u>FOR MODEL</u>	<u>BOILER SERIAL NO.</u>	<u>SHIP VIA</u>
5	400131	Boiler Tubes	CLM180	12345	Freight Truck


BRYAN BOILERS  
783 N. CHILI AVE. \* PERU \* INDIANA \* 46970  
PHONE: 765-473-6651 \* FAX: 765-473-3074  
E-MAIL: bryanboilers@iquest.net \* INTERNET: <http://www.bryanboilers.com>



BASE ASSEMBLY DETAIL



SECTION A-A

		BRYAN STEAM	
783 North Chili Avenue		Peru, IN 46970	
DWG. TITLE:			
CLM90 FORCED DRAFT			
STEAM BOILER ASSEMBLY			
DRAWN BY:	DATE:	SCALE:	STEP:
JSL	11/14/03	NONE	FS
DWG. NO.:		C21000	

EFF.DATE: 6/01/04

REPL.: NEW

**CLM - SERIES  
FORCED DRAFT - STEAM  
PARTS LIST**

FORM: 2352

PAGE: CLM - FD - S - 2

ITEM	DESCRIPTION	CLM120-S		CLM150-S		CLM180-S		CLM210-S		CLM240-S		CLM270-S		CLM300-S	
		QTY	PART NO.	QTY	PART NO.	QTY	PART NO.	QTY	PART NO.	QTY	PART NO.	QTY	PART NO.	QTY	PART NO.
1	PRESSURE VESSEL - (With Tubes) - 15#	1	400111.120	1	400111.150	1	400111.180	1	400111.210	1	400111.240	1	400111.270	1	400111.300
	PRESSURE VESSEL - (With Tubes) - 150#	1	400112.120	1	400112.150	1	400112.180	1	400112.210	1	400112.240	1	400112.270	1	400112.300
	<b>BOILER TUBE ASSEMBLY</b>														
2	Boiler Tube	27	400131	36	400131	45	400131	63	400131	72	400131	81	400131	90	400131
	Boiler Tube Studs	26	25184	36	25184	44	25184	62	25184	71	25184	80	25184	89	25184
	Tube Clamp	26	23622	36	23622	44	23622	62	23622	71	23622	80	23622	89	23622
	Tube Clamp Nut	26	25114	36	25114	44	25114	62	25114	71	25114	80	25114	89	25114
3	Tube Baffle														
	<b>BOILER BASE ASSEMBLY - Welded Assembly</b>														
4	Support Bar (long) 42-1/8" (ft)	4	11002	4	11002	4	11002	4	11002	4	11002	4	11002	4	11002
6	Support Bar (short) - Knockdown Only 22-1/8" (ft)	2	11002	2	11002	2	11002	2	11002	2	11002	2	11002	2	11002
	<b>FLUE COLLECTOR PANELS</b>														
7	Flue Collector Side	1	300299.120	1	300299.150	1	300299.180	1	300299.210	1	300299.240	1	300299.270	1	300299.300
8	Flue Collector - Front	1	300281	1	300281	1	300281	1	300281	1	300281	1	300281	1	300281
9	Flue Collector - Rear	1	300281	1	300281	1	300281	1	300281	1	300281	1	300281	1	300281
10	Flue Collector Top	1	300286.120	1	300286.150	1	300286.180	1	300286.210	1	300286.240	1	300286.270	1	300286.300
11	Flue Collector Stack Extension	1	28701	1	28702	1	28703	1	28703	1	28704	1	28704	1	28704
	<b>FLUE COLLECTOR PANEL INSULATION</b>														
12	Flue Collector Tube Wrap	1	300357.120	1	300357.150	1	300357.180	1	300357.210	1	300357.240	1	300357.270	1	300357.300
13	Flue Collector Front Insulation	1	300358.120	1	300358.150	1	300358.180	1	300358.210	1	300358.240	1	300358.270	1	300358.300
14	Flue Collector Rear Insulation	1	300358.120	1	300358.150	1	300358.180	1	300358.210	1	300358.240	1	300358.270	1	300358.300
15	Flue Collector Side Insulation	1	300359.120	1	300359.150	1	300359.180	1	300359.210	1	300359.240	1	300359.270	1	300359.300
16	Flue Collector Insulation Strips Front/Rear 6' x 3" x 1" Inswool	2	24529	2	24529	2	24529	2	24529	2	24529	2	24529	2	24529
	<b>COMBUSTION CHAMBER REFRACTORY ASSEMBLY</b>														
17	Side Insulation Block 1/2" x 18" x 24" (sq. ft.)	17	24500	21	24500	21	24500	28	24500	32	24500	29	24500	35	24500
18	Floor Insulation Block 1-1/2" x 24" x 36" (sq. ft.)	21	24504	24	24504	25	24504	26	24504	30	24504	30	24504	33	24504



EFF.DATE: 6/01/04

REPL.: NEW

**CLM - SERIES  
FORCED DRAFT - STEAM  
PARTS LIST**

FORM: 2352

PAGE: CLM - FD - S - 4

ITEM	DESCRIPTION	CLM120-S		CLM150-S		CLM180-S		CLM210-S		CLM240-S		CLM270-S		CLM300-S	
		REQ	PART NO.	REQ	PART NO.	REQ	PART NO.	REQ	PART NO.	REQ	PART NO.	REQ	PART NO.	REQ	PART NO.
		<b>STEAM TRIM</b>													
	Control Panel	<b>REFER TO EQUIPMENT LIST</b>													
	Terminal Strip *														
	Gauge Glass														
	Gauge Glass Valves														
	Pressuretrol - Operator														
	Pressuretrol - High Limit														
	Low Water Cut Off & Pump Control														
	Auxiliary Low Water Cut Off														
	Try Cocks														
	Pressure Gauge														
	Pressure Relief Valve														
	Pressure Shutoff Cock														
	Blowdown Valves (Optional)														
	<b>SERVICE TOOLS</b>														
	Tube Puller **	1	28905	1	28905	1	28905	1	28905	1	28905	1	28905	1	28905
	Tube Driver **	1	28901	1	28901	1	28901	1	28901	1	28901	1	28901	1	28901
	Tube Brush ***	1	28917	1	28917	1	28917	1	28917	1	28917	1	28917	1	28917

\* Depends on Number of Terminals Required

\*\* Furnished as Standard on High Pressure Steam Only

\*\*\* Not Standard. Available Upon Request.