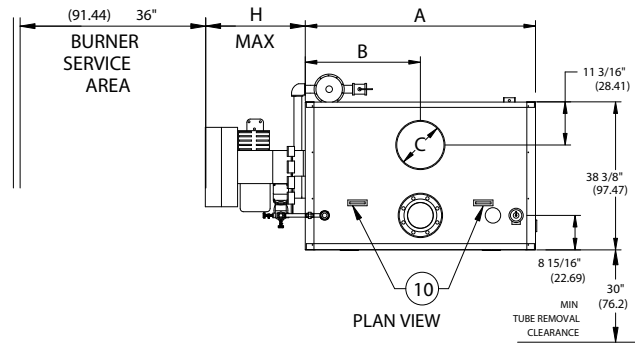


CLM SERIES FORCED DRAFT 15# & 150#
 STEAM BOILERS (CLM120-CLM300) REVERSE CONSTRUCTION

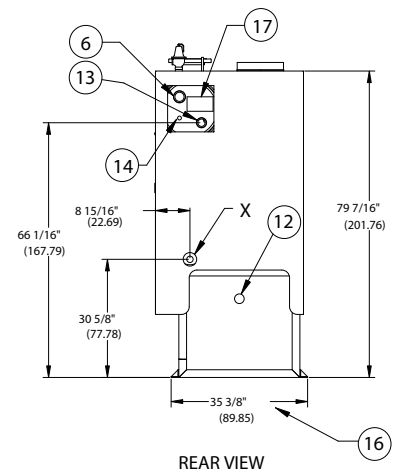
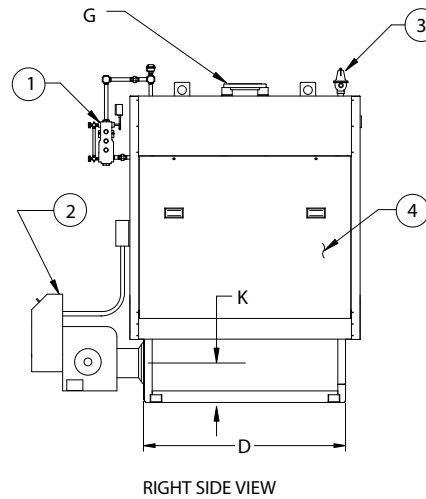
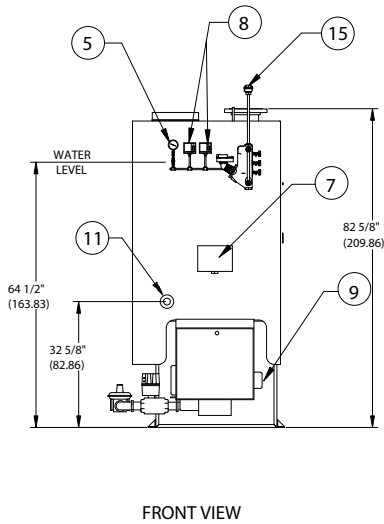
EFFECTIVE DATE: 12/9/03
 REPLACES: 9/16/03

NOTES:

1. ALL DIMENSIONS ARE IN INCHES. THOSE IN PARENTHESES ARE CENTIMETERS.
2. LOCATION DIMENSIONS ARE ALL $\pm 1/2"$.
3. GAS TRAIN, CONTROL AND BURNER CONFIGURATION WILL VARY DEPENDING ON JOB SPECIFICATIONS & CONDITIONS.
4. DIMENSIONS ARE SUBJECT TO CHANGE WITHOUT NOTICE. CONSULT FACTORY FOR CERTIFIED DIMENSIONS.
5. ALL FLANGES ARE 150# DESIGN UNLESS NOTED.



MODEL	K
120-240	12"
270-300	15"



1. FLOAT TYPE L.W.C.O.	6. CLNOUT./INSP. OPNG-2"NPT(5.08)	11. CLNOUT./INSP OPNG-1 1/2" (3.81)	16. WIDTH OVER MTG LUGS
2. FORCED DRAFT BURNER	7. ELEC. ENCLOSURE	12. FLAME OBSERVATION PORT	17. ASME NAME PLATE
3. RELIEF VALVE	8. PRESSURETROLS	13. 1" NPT (2.54) SURFACE BLOWOFF CONNECTION	
4. TUBE ACCESS PANEL	9. OIL PUMP LOCATION	14. 1 1/2" (3.81) FEED CONNECTION	
5. PRESSURE GAUGE	10. MFTING LUG	15. PROBE TYPE AUX L.W.C.O	

BOILER MODEL		CLM120	CLM150	CLM180	CLM210	CLM240	CLM270	CLM300
A-LENGTH OVER JACKET		50 11/16" (128.74)	59 11/16" (151.60)	69 1/8" (175.57)	78 3/8" (199.07)	88" (223.52)	97" (246.38)	106 5/8" (270.82)
B-FLUE LOCATION		25 11/32" (64.37)	29 27/32" (75.80)	34 9/16" (87.78)	39 3/16" (99.53)	44" (111.76)	48 1/2" (123.19)	53 5/16" (135.41)
C-FLUE DIAMETER		10" (25.40)	12" (30.48)	14" (35.56)	14" (35.56)	16" (40.64)	16" (40.64)	16" (40.64)
D-LENGTH OVER BASE		43 1/8" (109.53)	52 3/8" (133.03)	61 5/8" (156.52)	70 7/8" (180.02)	80 1/8" (203.51)	89 7/16" (227.16)	99 1/16" (251.61)
G-SUPPLY NOZZLE SEE NOTE 5	15 PSI	6" FLG (15.24)	6" FLG (15.24)	6" FLG (15.24)	6" FLG (15.24)	6" FLG (15.24)	6" FLG (15.24)	6" FLG (15.24)
	150 PSI	3" NPT (7.62)	3" NPT (7.62)	3" NPT (7.62)	3" NPT (7.62)	3" NPT (7.62)	3" NPT (7.62)	3" NPT (7.62)
X-BLOWDOWN CONNECTION	15 PSI	1 1/4" (3.18)	1 1/4" (3.18)	1 1/4" (3.18)	1 1/2" (3.81)	1 1/2" (3.81)	1 1/2" (3.81)	1 1/2" (3.81)
	150 PSI	1" (2.54)	1" (2.54)	1" (2.54)	1" (2.54)	1" (2.54)	1" (2.54)	1" (2.54)

H- BURNER EXTENSION

CONSULT FACTORY FOR BURNER EXTENSION APPLICATIONS



BRYAN BOILERS

783 NORTH CHILI AVE
 PERU, INDIANA 46970

ORDER NO.:	
ORDER REV. NO.:	
FORM NO.:	2153

CLM SERIES FORCED DRAFT STEAM BOILERS REVERSE CONSTRUCTION

BOILER MODEL		CLM120	CLM150	CLM180	CLM210	CLM240	CLM270	CLM300
INPUT	MBH	1,200	1,500	1,800	2,100	2,400	2,700	3,000
	(KW)	351.6	439.5	527.4	615.3	703.2	791.1	879.0
OUTPUT*	MBH	960	1,200	1,440	1,680	1,920	2,160	2,400
	(KW)	281.3	351.6	421.9	492.2	562.6	632.9	703.2
BOILER HORSEPOWER	HP	29	36	43	50	57	64	72
	(KW)	284	353	421	490	559	627	706
TUBE DIAMETER	INCHES	1.00	1.00	1.00	1.00	1.00	1.00	1.00
	(CM)	2.54	2.54	2.54	2.54	2.54	2.54	2.54
NUMBER OF TUBES		36	45	54	63	72	81	90
PRESSURE VESSEL								
VOLUME	GAL	66	79	93	106	120	133	147
	(L)	249.8	299.0	352.0	401.2	454.2	503.4	556.4
HEATING SURFACE	SQ FT	145	180	215	251	287	322	360
	(SQ M)	13.5	16.7	20.0	23.3	26.7	29.9	33.5
STEAM OUTPUT*	LBS/HR	990	1,237	1,485	1,732	1,979	2,227	2,474
	(KG/HR)	449.1	561.1	673.6	785.6	897.7	1,010.2	1,122.2
OPERATING WEIGHT	LBS	3,000	3,510	4,025	4,535	5,050	6,010	6,150
	(KG)	1,360.8	1,592.1	1,825.7	2,057.1	2,290.7	2,726.1	2,789.6
SHIPPING WEIGHT	LBS	2,450	2,850	3,250	3,650	4,050	4,900	4,925
	(KG)	1,111.3	1,292.8	1,474.2	1,655.6	1,837.1	2,222.6	2,234.0
RELIEF VALVE TYPICAL - 15 PSIG (103.4 KPA)								
QUANTITY		(1) 13-214	(1) 13-214	(1) 13-214	(2) 13-214	(2) 13-214	(2) 13-214	(2) 13-214
SIZE	INCHES	1½ x 2	1½ x 2	1½ x 2	1½ x 2	1½ x 2	1½ x 2	1½ x 2
	(CM)	3.81 x 5.08	3.81 x 5.08	3.81 x 5.09	3.81 x 5.08	3.81 x 5.09	3.81 x 5.08	3.81 x 5.09
CAPACITY-TOTAL	MBH	1,900	1,900	1,900	3,800	3,800	3,800	3,800
	(KW)	556.7	556.7	556.7	1,113.4	1,113.4	1,113.4	1,113.4
RELIEF VALVE TYPICAL - 150 PSIG (1,034.2 KPA)								
QUANTITY		(1) 6021ED	(1) 6021ED	(1) 6021ED	(1) 6021FE	(1) 6021FE	(1) 6021FE	(1) 6021FE
SIZE	INCHES	3/4 x 1	3/4 x 1	3/4 x 1	1 x 1¼	1 x 1¼	1 x 1¼	1 x 1¼
	(CM)	1.90 x 2.54	1.90 x 2.54	1.90 x 2.55	2.54 x 3.17	2.54 x 3.18	2.54 x 3.17	2.54 x 3.18
CAPACITY-TOTAL	MBH	1,651	1,651	1,651	2,583	2,583	2,583	2,583
	(KW)	483.7	483.7	483.7	756.8	756.8	756.8	756.8

* Output based on nominal 80% of input. Actual combustion efficiencies will vary and are fuel dependant.