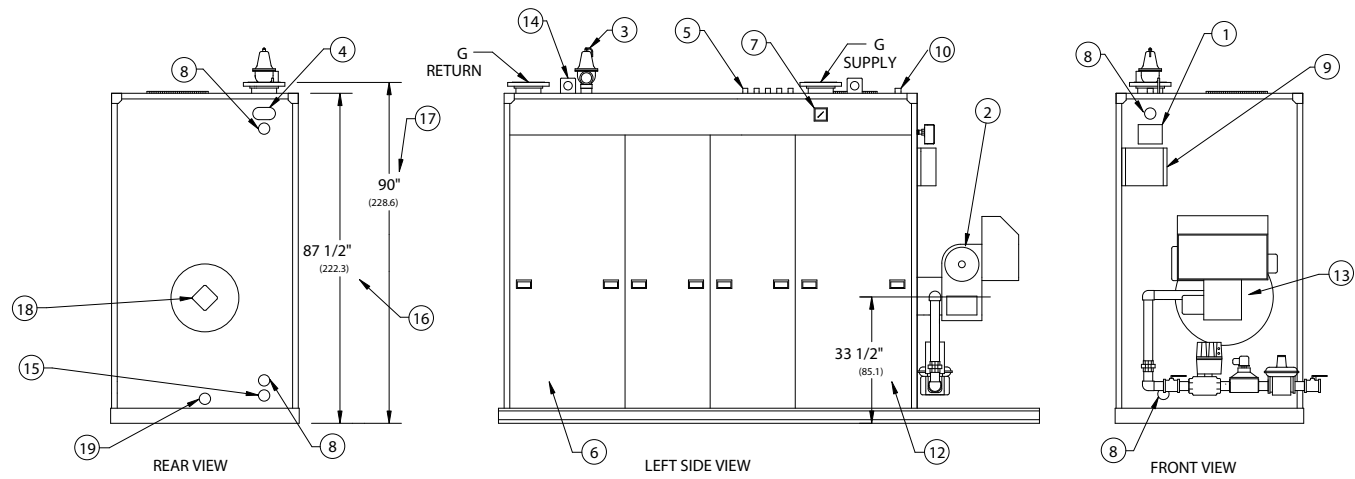
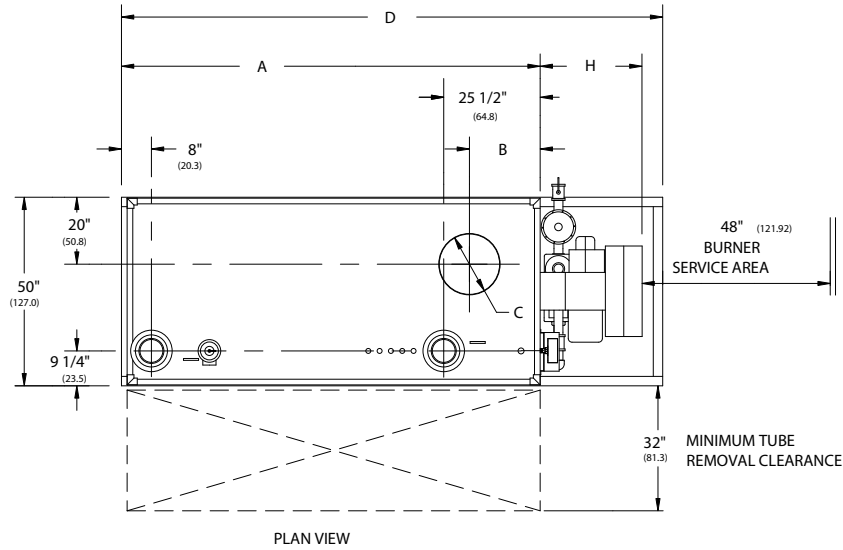


**RV SERIES FORCED DRAFT
WATER BOILERS (RV350-RV400)**

EFFECTIVE DATE: 3/15/04
REPLACES: 7/24/03

NOTES:

1. ALL DIMENSIONS ARE IN INCHES. THOSE IN PARENTHESES ARE CENTIMETERS.
2. LOCATION DIMENSIONS ARE ALL $\pm 1/2"$.
3. GAS TRAIN, CONTROL AND BURNER CONFIGURATION WILL VARY DEPENDING ON JOB SPECIFICATIONS & CONDITIONS.
4. DIMENSIONS ARE SUBJECT TO CHANGE WITHOUT NOTICE. CONSULT FACTORY FOR CERTIFIED DIMENSIONS.
5. ALL FLANGES ARE 150# UNLESS OTHERWISE NOTED, FLANGES TO STRADDLE CENTER LINE.



1. PROBE TYPE L.W.C.O.-	6. JACKET ACCESS PANELS	12. BURNER CENTER LINE	16. HEIGHT OVER JACKET
2. FORCED DRAFT BURNER	7. PRESS./TEMP. GAUGE	13. OIL PUMP LOCATION	17. HEIGHT OVER SUPPLY
3. RELIEF VALVE	8. CLNOUT./INSP. OPNG.-1 1/2" NPT	14. LIFTING LUGS	18. FLAME OBSERVATION PORT
4. ASME NAMEPLATE	9. ELEC. ENCLOSURE-	15. DRAIN CONNECTION 2" NPT	19. COMB. CHAMBER DRAIN 1" NPT
5. CONTROL TAPPINGS 3/4" NPT	10. VENT CONNECTION 1" NPT		

BOILER MODEL			RV350	RV400
A-LENGTH OVER JACKET			98" (248.9)	111" (281.9)
B-FLUE LOCATION			16" (40.6)	18 3/4" (47.6)
C-FLUE DIAMETER			16" (40.6)	16" (40.6)
D-LENGTH OVER BASE			130 1/2" (331.5)	143 1/2" (364.5)
G-SUPPLY / RETURN NOZZLE SIZE			4" FLG (10.2)	6" FLG (15.2)
H-BURNER EXTENSION	CONSULT FACTORY FOR BURNER EXTENSION APPLICATIONS			



783 NORTH CHILI AVE
PERU, INDIANA 46970

ORDER NO.:	
ORDER REV. NO.:	
FORM NO.:	1705

RV SERIES FORCED DRAFT WATER BOILERS

BOILER MODEL		RV350	RV400
INPUT	MBH	3,500	4,000
	(KW)	1,025.5	1,172.0
OUTPUT*	MBH	2,940	3,360
	(KW)	861.4	984.5
BOILER HORSEPOWER*	HP	88	100
	(KW)	860.7	983.7
TUBE DIAMETER	INCHES	1.50	1.50
	(CM)	3.81	3.81
NUMBER OF TUBES		47	55
PRESSURE VESSEL			
VOLUME	GAL	146	169
	(L)	552.6	639.7
HEATING SURFACE	SQ FT	419	490
	(SQ M)	38.9	45.5
OPERATING WEIGHT	LBS	8,217	9,099
	(KG)	3,727.3	4,127.3
SHIPPING WEIGHT	LBS	7,000	7,690
	(KG)	3,175.2	3,488.2
RELIEF VALVE TYPICAL - 30 PSIG (206.8 KPA)			
QUANTITY		(1) 740	(1) 740
SIZE	INCHES	2 x 2½	2 x 2½
	(CM)	5.08 x 6.35	5.08 x 6.35
CAPACITY-TOTAL	MBH	5,250	5,250
	(KW)	1,538.2	1,538.2
RELIEF VALVE TYPICAL - 125 PSIG (861.8 KPA)			
QUANTITY		(1) 174A	(1) 174A
SIZE	INCHES	1¼ x 1¼	1¼ x 1¼
	(CM)	3.17 x 3.17	3.17 x 3.17
CAPACITY-TOTAL	MBH	5,370	5,370
	(KW)	1,573.4	1,573.4

* Output and Boiler HP based on an average natural gas combustion efficiency.