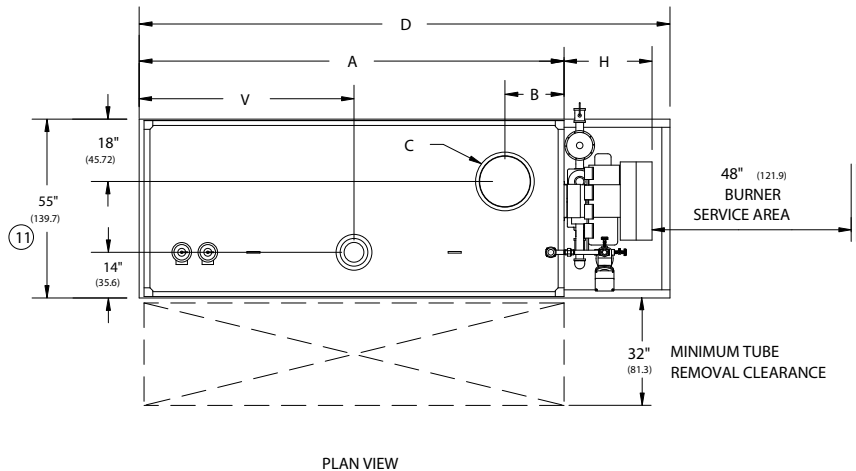


RV SERIES FORCED DRAFT 15# & 150#
STEAM BOILERS (RV350-RV400)

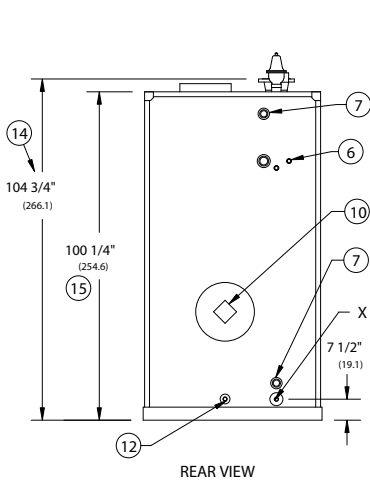
EFFECTIVE DATE: 3/15/04
REPLACES: 7/24/03

NOTES:

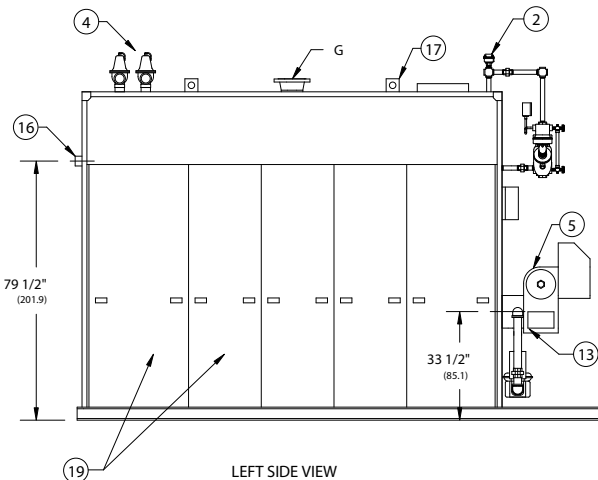
1. ALL DIMENSIONS ARE IN INCHES. THOSE IN PARENTHESES ARE CENTIMETERS.
2. LOCATION DIMENSIONS ARE ALL $\pm 1/2"$.
3. GAS TRAIN, CONTROL AND BURNER CONFIGURATION WILL VARY DEPENDING ON JOB SPECIFICATIONS & CONDITIONS.
4. DIMENSIONS ARE SUBJECT TO CHANGE WITHOUT NOTICE. CONSULT FACTORY FOR CERTIFIED DIMENSIONS.
5. ALL FLANGES ARE 150# UNLESS OTHERWISE NOTED, FLANGES TO STRADDLE CENTER LINE.



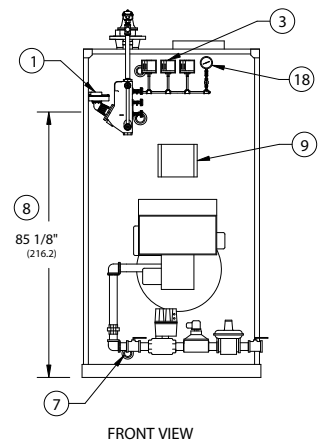
PLAN VIEW



REAR VIEW



LEFT SIDE VIEW



FRONT VIEW

1. L.W.C.O./PUMP CONTROL - 157
2. PROBE TYPE AUX. L.W.C.O.
3. PRESSURE CONTROLS
4. RELIEF VALVE(S)
5. FORCED DRAFT BURNER

6. SURFACE BLOWOFF 1" NPT
7. CLNOUT./INSP. OPNG.-1 1/2"NPT
8. NORMAL BOILER WATER LEVEL
9. ELEC. ENCLOSURE-
10. FLAME OBSERVATION PORT

11. WIDTH OVER BASE
12. COMB. CHAMBER DRAIN 1" NPT
13. OIL CONNECTION
14. HEIGHT OVER FLOW NOZZLE
15. HEIGHT OVER JACKET

16. FEEDWATER CONN. 2" NPT
17. LIFTING LUGS
18. PRESS./TEMP. GAUGE
19. JACKET ACCESS PANELS

BOILER MODEL				RV350	RV400
A-LENGTH OVER JACKET				98" (248.9)	111" (281.9)
B-FLUE LOCATION				16" (40.6)	18 3/4" (47.6)
C-FLUE DIAMETER				16" (40.6)	16" (40.6)
D-LENGTH OVER BASE				130 1/2" (331.5)	143 1/2" (364.5)
G-SUPPLY NOZZLE SIZE	15 PSI			6" FLG (15.2)	8" FLG (20.3)
	150 PSI			4" FLG (10.2)	6" FLG (15.2)
H-BURNER EXTENSION		CONSULT FACTORY FOR BURNER EXTENSION APPLICATIONS			
V-SUPPLY NOZZLE LOC.				49 7/8" (126.7)	56 1/4" (142.9)
X-BLOWDOWN CONNECTION	15 PSI			1 1/2" (3.81)	1 1/2" (3.81)
	150 PSI			1" (2.54)	1" (2.54)



BRYAN BOILERS

783 NORTH CHILI AVE
PERU, INDIANA 46970

ORDER NO.:
ORDER REV. NO.:
FORM NO.: 1723

RV SERIES FORCED DRAFT STEAM BOILERS

BOILER MODEL		RV350	RV400
INPUT	MBH	3,500	4,000
	(KW)	1,025.5	1,172.0
OUTPUT*	MBH	2,800	3,200
	(KW)	820.4	937.6
BOILER HORSEPOWER	HP	84	96
	(KW)	820	937
TUBE DIAMETER	INCHES	1.50	1.50
	(CM)	3.81	3.81
NUMBER OF TUBES		47	55
PRESSURE VESSEL			
VOLUME	GAL	160	182
	(L)	605.6	688.9
HEATING SURFACE	SQ FT	419	490
	(SQ M)	38.9	45.5
STEAM OUTPUT*	LBS/HR	2,887	3,299
	(KG/HR)	1,309.4	1,496.4
OPERATING WEIGHT	LBS	8,444	9,688
	(KG)	3,830.4	4,394.4
SHIPPING WEIGHT	LBS	7,110	8,170
	(KG)	3,225.1	3,705.9
RELIEF VALVE TYPICAL - 15 PSIG (103.4 KPA)			
QUANTITY		(2) 12-205	(2) 12-205
SIZE	INCHES	2 x 2	2 x 2
	(CM)	5.08 x 5.08	5.08 x 5.08
CAPACITY-TOTAL	MBH	5,000	5,000
	(KW)	1,465.0	1,465.0
RELIEF VALVE TYPICAL - 150 PSIG (1,034.2 KPA)			
QUANTITY		(1) 6021GF	(1) 6021GF
SIZE	INCHES	1¼ x 1½	1¼ x 1½
	(CM)	3.17 x 3.81	3.17 x 3.81
CAPACITY-TOTAL	MBH	4,234	4,234
	(KW)	1,240.6	1,240.6

* Output based on nominal 80% of input. Actual combustion efficiencies will vary and are fuel dependant.