

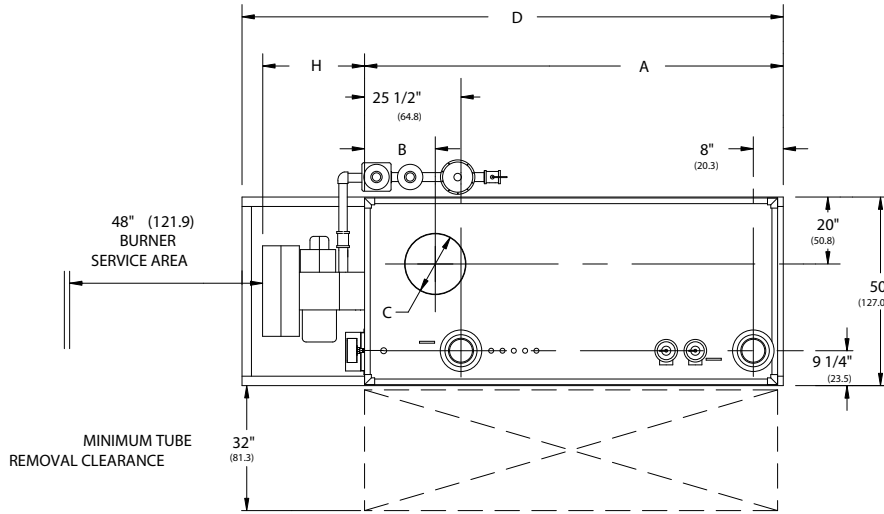
RV SERIES FORCED DRAFT WATER BOILERS
(RV350-RV400) REVERSE CONSTRUCTION

EFFECTIVE DATE: 3/15/04

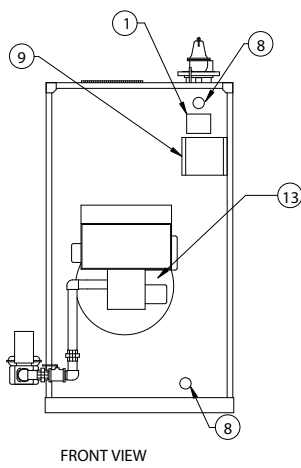
REPLACES: 12/9/03

NOTES:

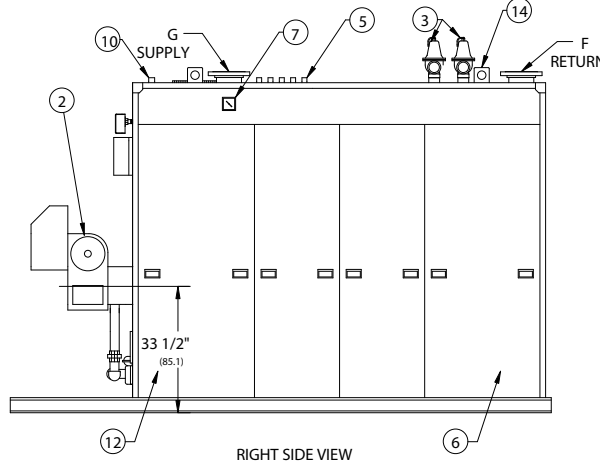
1. ALL DIMENSIONS ARE IN INCHES THOSE IN PARENTHESES ARE CENTIMETERS.
2. LOCATION DIMENSIONS ARE ALL $\pm 1/2"$.
3. GAS TRAIN, CONTROL AND BURNER CONFIGURATION WILL VARY DEPENDING ON JOB SPECIFICATIONS & CONDITIONS.
4. DIMENSIONS ARE SUBJECT TO CHANGE WITHOUT NOTICE. CONSULT FACTORY FOR CERTIFIED DIMENSIONS.
5. ALL FLANGES ARE 150# UNLESS OTHERWISE NOTED, FLANGES TO STRADDLE CENTER LINE.



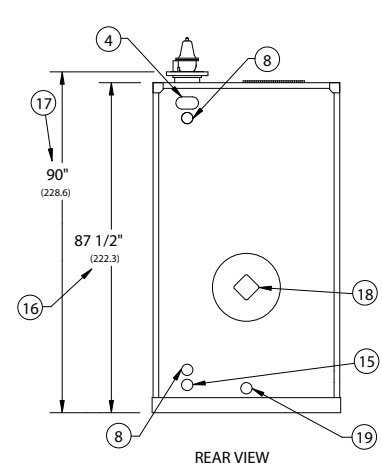
PLAN VIEW



FRONT VIEW



RIGHT SIDE VIEW



REAR VIEW

1. PROBE TYPE L.W.C.O.-
2. FORCED DRAFT BURNER
3. RELIEF VALVE
4. ASME NAMEPLATE
5. CONTROL TAPPINGS 3/4" NPT

6. JACKET ACCESS PANELS
7. PRESS./TEMP. GAUGE
8. CLNOUT./INSP. OPNG.-1 1/2" NPT
9. ELEC. ENCLOSURE-
10. VENT CONNECTION 1" NPT

12. BURNER CENTER LINE
13. OIL PUMP LOCATION
14. LIFTING LUGS
15. DRAIN CONNECTION 2" NPT

16. HEIGHT OVER JACKET
17. HEIGHT OVER SUPPLY
18. FLAME OBSERVATION PORT
19. COMB. CHAMBER DRAIN 1" NPT

BOILER MODEL			RV350	RV400
A-LENGTH OVER JACKET			98" (248.9)	111" (281.9)
B-FLUE LOCATION			16" (40.6)	18 3/4" (47.6)
C-FLUE DIAMETER			16" (40.6)	16" (40.6)
D-LENGTH OVER BASE			130 1/2" (331.5)	143 1/2" (364.5)
G-SUPPLY / RETURN NOZZLE SIZE			4" FLG (10.2)	6" FLG (15.2)
H-BURNER EXTENSION	CONSULT FACTORY FOR BURNER EXTENSION APPLICATIONS			



BRYAN BOILERS

783 NORTH CHILI AVE
PERU, INDIANA 46970

ORDER NO.:

ORDER REV. NO.:

FORM NO: 2156

RV SERIES FORCED DRAFT WATER BOILERS REVERSE CONSTRUCTION

BOILER MODEL		RV350	RV400
INPUT	MBH	3,500	4,000
	(KW)	1,025.5	1,172.0
OUTPUT*	MBH	2,940	3,360
	(KW)	861.4	984.5
BOILER HORSEPOWER*	HP	88	100
	(KW)	860.7	983.7
TUBE DIAMETER	INCHES	1.50	1.50
	(CM)	3.81	3.81
NUMBER OF TUBES		47	55
PRESSURE VESSEL			
VOLUME	GAL	146	169
	(L)	552.6	639.7
HEATING SURFACE	SQ FT	419	490
	(SQ M)	38.9	45.5
OPERATING WEIGHT	LBS	8,217	9,099
	(KG)	3,727.3	4,127.3
SHIPPING WEIGHT	LBS	7,000	7,690
	(KG)	3,175.2	3,488.2
RELIEF VALVE TYPICAL - 30 PSIG (206.8 KPA)			
QUANTITY		(1) 740	(1) 740
SIZE	INCHES	2 x 2½	2 x 2½
	(CM)	5.08 x 6.35	5.08 x 6.35
CAPACITY-TOTAL	MBH	5,250	5,250
	(KW)	1,538.2	1,538.2
RELIEF VALVE TYPICAL - 125 PSIG (861.8 KPA)			
QUANTITY		(1) 174A	(1) 174A
SIZE	INCHES	1¼ x 1¼	1¼ x 1¼
	(CM)	3.17 x 3.17	3.17 x 3.17
CAPACITY-TOTAL	MBH	5,370	5,370
	(KW)	1,573.4	1,573.4

* Output and Boiler HP based on an average natural gas combustion efficiency.