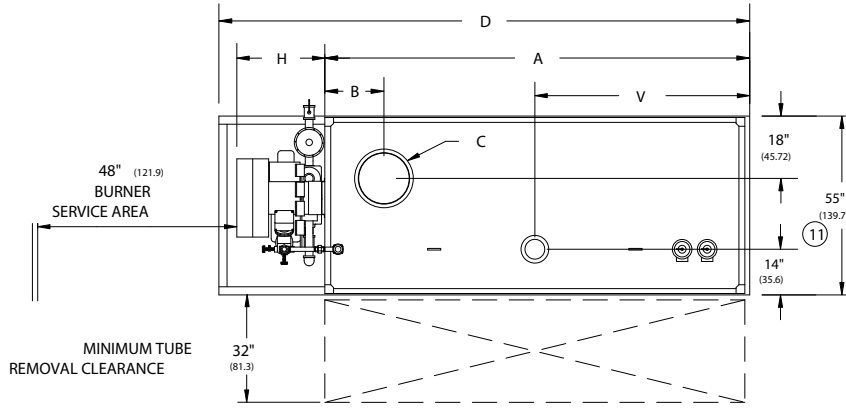


RV SERIES FORCED DRAFT 15# & 150#  
STEAM BOILERS (RV350-RV400) REVERSE CONSTRUCTION

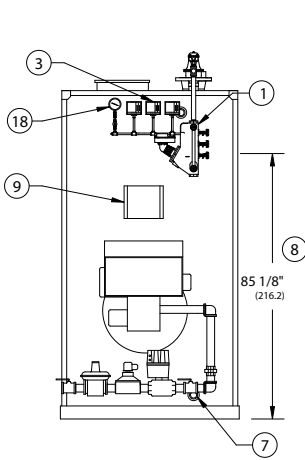
EFFECTIVE DATE: 3/15/04  
REPLACES: 12/9/03

NOTES:

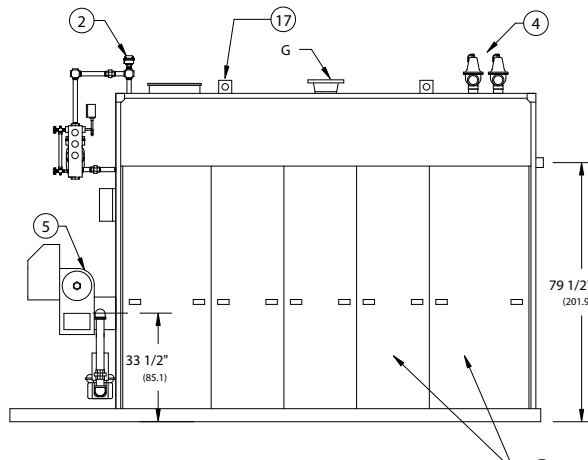
1. ALL DIMENSIONS ARE IN INCHES. THOSE IN PARENTHESES ARE CENTIMETERS.
2. LOCATION DIMENSIONS ARE ALL  $\pm 1/2"$ .
3. GAS TRAIN, CONTROL AND BURNER CONFIGURATION WILL VARY DEPENDING ON JOB SPECIFICATIONS & CONDITIONS.
4. DIMENSIONS ARE SUBJECT TO CHANGE WITHOUT NOTICE. CONSULT FACTORY FOR CERTIFIED DIMENSIONS.
5. ALL FLANGES ARE 150# UNLESS OTHERWISE NOTED, FLANGES TO STRADDLE CENTER LINE.



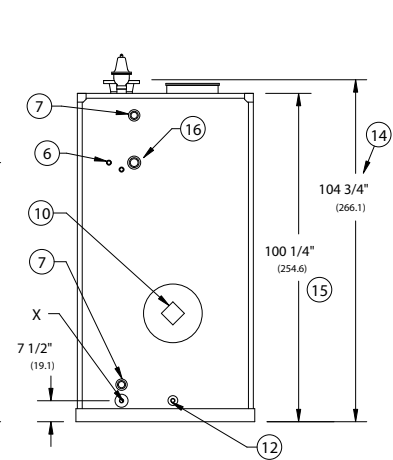
PLAN VIEW



FRONT VIEW



RIGHT SIDE VIEW



REAR VIEW

1. L.W.C.O./PUMP CONTROL - 157	6. SURFACE BLOWOFF 1" NPT	11. WIDTH OVER BASE	16. FEEDWATER CONN. 2" NPT
2. PROBE TYPE AUX. L.W.C.O.	7. CLNOUT./INSP. OPNG.-1 1/2"NPT	12. COMB. CHAMBER DRAIN 1" NPT	17. LIFTING LUGS
3. PRESSURE CONTROLS	8. NORMAL BOILER WATER LEVEL	13. OIL PUMP LOCATION	18. PRESS./TEMP. GAUGE
4. RELIEF VALVE(S)	9. ELEC. ENCLOSURE-	14. HEIGHT OVER FLOW NOZZLE	19. JACKET ACCESS PANELS
5. FORCED DRAFT BURNER	10. FLAME OBSERVATION PORT	15. HEIGHT OVER JACKET	

BOILER MODEL		RV350	RV400
A-LENGTH OVER JACKET		98" (248.9)	111" (281.9)
B-FLUE LOCATION		16" (40.6)	18 3/4" (47.6)
C-FLUE DIAMETER		16" (40.6)	16" (40.6)
D-LENGTH OVER BASE		130 1/2" (331.5)	143 1/2" (364.5)
G-SUPPLY NOZZLE SIZE	15 PSI	6" FLG (15.2)	8" FLG (20.3)
	150 PSI	4" FLG (10.2)	6" FLG (15.2)
H-BURNER EXTENSION	CONSULT FACTORY FOR BURNER EXTENSION APPLICATION		
V-SUPPLY NOZZLE LOC.		49 7/8" (126.7)	56 1/4" (142.9)
X-BLOWDOWN CONNECTION	15 PSI	1 1/2" (3.81)	1 1/2" (3.81)
	150 PSI	1" (2.54)	1" (2.54)



BRYAN BOILERS

783 NORTH CHILI AVE  
PERU, INDIANA 46970

ORDER NO.:	
ORDER REV. NO.:	
FORM NO.:	2159

# RV SERIES FORCED DRAFT STEAM BOILERS REVERSE CONSTRUCTION

BOILER MODEL		RV350	RV400
INPUT	MBH	3,500	4,000
	(KW)	1,025.5	1,172.0
OUTPUT*	MBH	2,800	3,200
	(KW)	820.4	937.6
BOILER HORSEPOWER	HP	84	96
	(KW)	820	937
TUBE DIAMETER	INCHES	1.50	1.50
	(CM)	3.81	3.81
NUMBER OF TUBES		47	55
PRESSURE VESSEL			
VOLUME	GAL	160	182
	(L)	605.6	688.9
HEATING SURFACE	SQ FT	419	490
	(SQ M)	38.9	45.5
STEAM OUTPUT*	LBS/HR	2,887	3,299
	(KG/HR)	1,309.4	1,496.4
OPERATING WEIGHT	LBS	8,444	9,688
	(KG)	3,830.4	4,394.4
SHIPPING WEIGHT	LBS	7,110	8,170
	(KG)	3,225.1	3,705.9
RELIEF VALVE TYPICAL - 15 PSIG (103.4 KPA)			
QUANTITY		(2) 12-205	(2) 12-205
SIZE	INCHES	2 x 2	2 x 2
	(CM)	5.08 x 5.08	5.08 x 5.08
CAPACITY-TOTAL	MBH	5,000	5,000
	(KW)	1,465.0	1,465.0
RELIEF VALVE TYPICAL - 150 PSIG (1,034.2 KPA)			
QUANTITY		(1) 6021GF	(1) 6021GF
SIZE	INCHES	1¼ x 1½	1¼ x 1½
	(CM)	3.17 x 3.81	3.17 x 3.81
CAPACITY-TOTAL	MBH	4,234	4,234
	(KW)	1,240.6	1,240.6

\* Output based on nominal 80% of input. Actual combustion efficiencies will vary and are fuel dependant.