

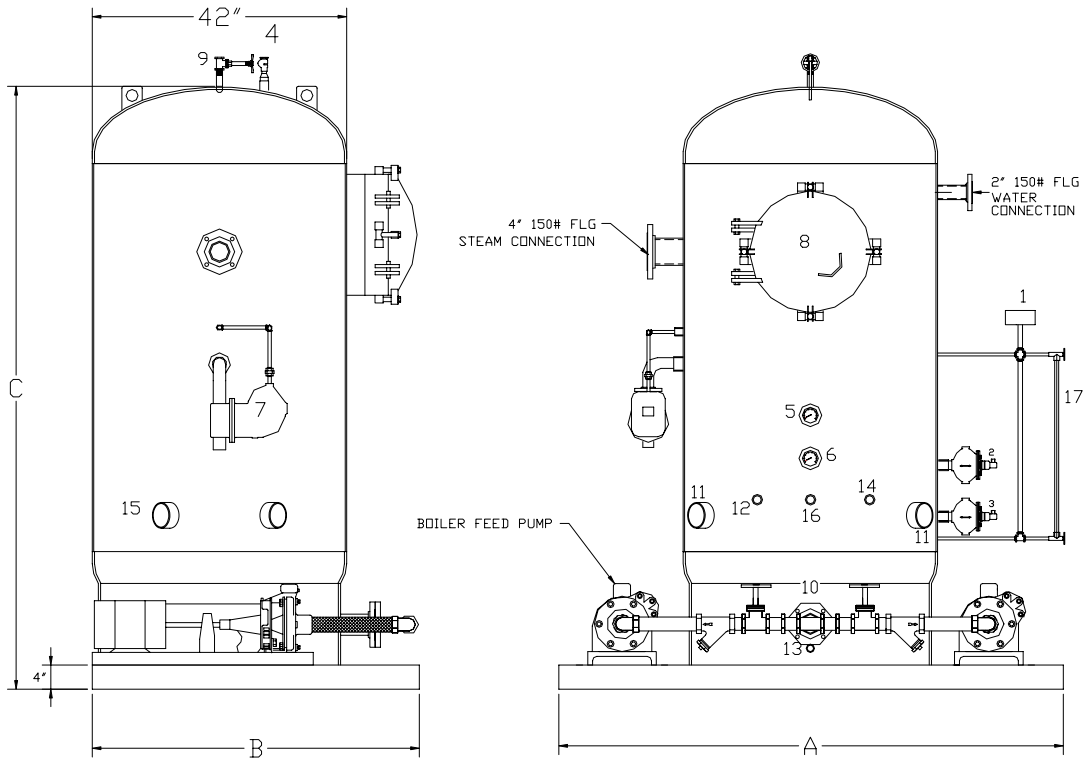
TRAY TYPE DEAERATOR
VERTICAL TANK DESIGN (5,000 PPH - 15,000 PPH)

EFFECTIVE DATE: 04/5/2000

REPLACES: 00/00/00

NOTES:

1. CONTROL AND PIPING CONFIGURATIONS WILL VARY DEPENDING ON JOB SPECIFICATIONS AND CONDITIONS.
2. DIMENSIONS ARE SUBJECT TO CHANGE WITHOUT NOTICE. CONSULT FACTORY FOR CERTIFIED DIMENSIONS.



- | | | | | |
|--------------------------|------------------------------|------------------------------|--|----------------------------|
| 1. MAKE-UP WATER CONTROL | 5. TEMPERATURE GAUGE | 9. 1-1/2" NPT VENT | 13. 1" NPT DRAIN | 16. 1" NPT MAGNESIUM ANODE |
| 2. HIGH LEVEL CONTROL | 6. PRESSURE GAUGE | 10. 3" 150# FLG PUMP SUCTION | 14. 1" NPT SAMPLE PORT | |
| 3. LOW LEVEL CONTROL | 7. 2" NPT OVERFLOW TRAP | 11. 2" NPT PUMP BYPASS | 15. 2" 150# FLG HIGH TEMPERATURE CONDENSATE RETURN | |
| 4. VACUUM BREAKER | 8. 20" DIA. TRAY ACCESS DOOR | 12. 1" NPT CHEMICAL PORT | 17. GAUGE GLASS | |

MODEL	CAPACITY		DIMENSIONS				INCHES CM
	LBS/HR Kg/HR	BOILER HP KW	(STORAGE) GALLONS LITERS	(A) OVER-ALL LENGTH	(B) OVER-ALL WIDTH	(C) OVER-ALL HEIGHT	
* = # OF PUMPS							
LDTV-150-5-1-*	5,000 2,268	145 1,422	100 378	66 168	54 137	83 211	
LDTV-150-10-2-*	10,000 4,536	290 2,844	200 757	66 168	54 137	99 251	
LDTV-150-15-3-*	15,000 6,804	435 4,267	300 1,135	66 168	54 137	113 287	

BRYAN STEAM

783 N. CHILI AVE
 PERU, IND.
 46970

DWG NO.:

A50766

	LDTV-5		LDTV-10		LDTV-15	
Deaerator Design						
Capacity	(pph)	(Kg/Hr)	(pph)	(Kg/Hr)	(pph)	(Kg/Hr)
	5000	2268	10000	4536	15000	6804
Number of Tray Columns	1		1		1	
Trays in each Column	5		5		5	
Number of Trays	5		5		5	
Style of Tray	46501		46501		46501	

Pressure Vessel						
Diameter	(in.)	(cm.)	(in.)	(cm.)	(in.)	(cm.)
	42	106.68	42	106.68	42	106.68
Shell Length	47.625	120.97	63.625	161.61	77.625	197.17
Head Thickness	0.3125	0.79	0.3125	0.79	0.3125	0.79
Shell Thickness	0.375	0.95	0.375	0.95	0.375	0.95

Connections/Opening						
Tray Access Door	(in.)	(cm.)	(in.)	(cm.)	(in.)	(cm.)
	20	50.8	20	50.8	20	50.8
Unde-aerated Water Inlet	2	5.08	2	5.08	2	5.08
Steam Inlet	4	10.16	4	10.16	4	10.16
High Temperature Return	3	7.62	3	7.62	3	7.62
Pump Suction	3	7.62	3	7.62	3	7.62
Pump Bypass	2	5.08	2	5.08	2	5.08
Overflow	2	5.08	2	5.08	2	5.08
Drain	2	5.08	2	5.08	2	5.08
Sample	1	2.54	1	2.54	1	2.54

Standard Level from Bottom of Storage Tank						
Overflow	(in.)	(cm.)	(in.)	(cm.)	(in.)	(cm.)
	26.5	67.31	41.5	105.41	55.5	140.97
High Level	22.5	57.15	37.5	95.25	51.5	130.81
Low Level	15.5	39.37	15.5	39.37	15.5	39.37
Head Seam	12.65	32.131	12.65	32.131	12.65	32.131
Overflow	(gallons)	(liters)	(gallons)	(liters)	(gallons)	(liters)
	131	496	215	814	302	1143
High Level	120	454	204	772	291	1101
Low Level	70	265	70	265	70	265
Head Seam	51.7	196	51.7	196	51.7	196