

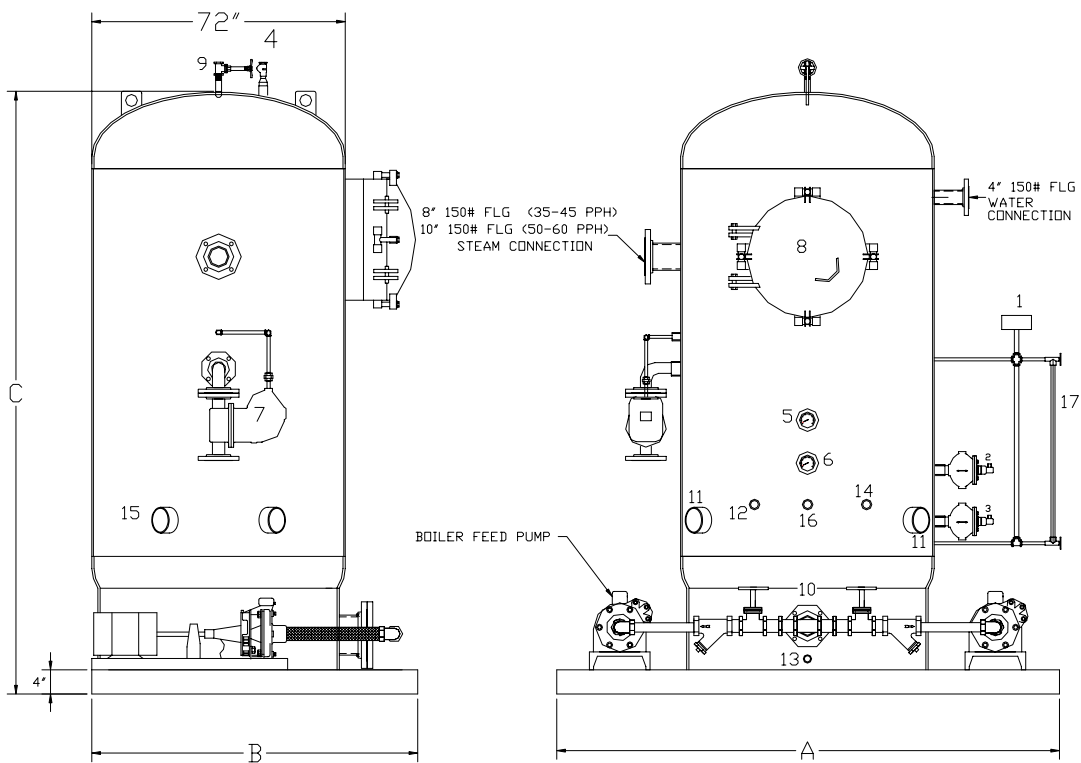
**TRAY TYPE DEAERATOR**  
**VERTICAL TANK DESIGN (35,000 PPH – 60,000 PPH)**

EFFECTIVE DATE: 04/5/2000

REPLACES: 00/00/0000

**NOTES:**

- |   |  |
|---|--|
| <p>1. CONTROL AND PIPING CONFIGURATIONS WILL VARY DEPENDING ON JOB SPECIFICATIONS AND CONDITIONS.</p> | <p>2. DIMENSIONS ARE SUBJECT TO CHANGE WITHOUT NOTICE. CONSULT FACTORY FOR CERTIFIED DIMENSIONS.</p> |
|---|--|



- |                          |                              |                              |  |                            |
|--------------------------|------------------------------|------------------------------|--|----------------------------|
| 1. MAKE-UP WATER CONTROL | 5. TEMPERATURE GAUGE         | 9. 1-1/2" NPT VENT           | 13. 1" NPT DRAIN                                   | 16. 1" NPT MAGNESIUM ANODE |
| 2. HIGH LEVEL CONTROL    | 6. PRESSURE GAUGE            | 10. 6" 150# FLG PUMP SUCTION | 14. 1" NPT SAMPLE PORT                             |                            |
| 3. LOW LEVEL CONTROL     | 7. 3" 150# FLG OVERFLOW TRAP | 11. 3" NPT PUMP BYPASS       | 15. 3" 150# FLG HIGH TEMPERATURE CONDENSATE RETURN | 17. GAUGE GLASS            |
| 4. VACUUM BREAKER        | 8. 24" DIA. TRAY ACCESS DOOR | 12. 1" NPT CHEMICAL PORT     |  |                            |

MODEL	CAPACITY			DIMENSIONS			INCHES CM
	LBS/HR Kg/HR	BOILER HP KW	(STORAGE) GALLONS LITERS	(A) OVER-ALL LENGTH	(B) OVER-ALL WIDTH	(C) OVER-ALL HEIGHT	
LDTV-150-35-7-*	35,000 15,876	1014 9,956	700 2,650	96 244	84 213	125 318	
LDTV-150-40-8-*	40,000 18,144	1159 11,378	800 3,028	96 244	84 213	131 333	
LDTV-150-45-9-*	45,000 20,412	1304 12,800	900 3,407	96 244	84 213	141 358	
LDTV-150-50-10-*	50,000 22,680	1449 14,222	1000 3,785	96 244	84 213	147 373	
LDTV-150-60-12-*	60,000 27,216	1739 17,067	1200 4,542	96 244	84 213	157 399	

**BRYAN STEAM**

783 N. CHILI AVE  
 PERU, IND.  
 46970

DWG NO.:

A50764

	LDTV-35		LDTV-40		LDTV-45		LDTV-50		LDTV-60	
<b>Deaerator Design</b>										
	(pph)	(Kg/Hr)	(pph)	(Kg/Hr)	(pph)	(Kg/Hr)	(pph)	(Kg/Hr)	(pph)	(Kg/Hr)
Capacity	35000	15880	40000	18149	45000	20417	50000	22686	60000	27223
Number of Tray Columns	3		3		3		3		3	
Trays in each Column	5		5		6		6		7	
Number of Trays	15		15		18		18		21	
Style of Tray	46501		46501		46501		46501		46501	
<b>Pressure Vessel</b>										
	(in.)	(cm.)	(in.)	(cm.)	(in.)	(cm.)	(in.)	(cm.)	(in.)	(cm.)
Diameter	72	182.88	72	182.88	72	182.88	72	182.88	72	182.88
Shell Length	74.625	189.55	80.625	204.79	90.625	230.19	96.625	245.43	106.625	270.83
Head Thickness	0.375	0.95	0.375	0.95	0.375	0.95	0.375	0.95	0.375	0.95
Shell Thickness	0.375	0.95	0.375	0.95	0.375	0.95	0.375	0.95	0.375	0.95
<b>Connections/Opening</b>										
	(in.)	(cm.)	(in.)	(cm.)	(in.)	(cm.)	(in.)	(cm.)	(in.)	(cm.)
Tray Access Door	24	60.96	24	60.96	24	60.96	24	60.96	24	60.96
Unde aerated Water Inlet	4	10.16	4	10.16	4	10.16	4	10.16	4	10.16
Steam Inlet	8	20.32	8	20.32	8	20.32	10	25.4	10	25.4
High Temperature Return	3	7.62	3	7.62	3	7.62	3	7.62	3	7.62
Pump Suction	6	15.24	6	15.24	6	15.24	6	15.24	6	15.24
Pump Bypass	3	7.62	3	7.62	3	7.62	3	7.62	3	7.62
Overflow	3	7.62	3	7.62	3	7.62	3	7.62	3	7.62
Drain	1	2.54	1	2.54	1	2.54	1	2.54	1	2.54
Sample	1	2.54	1	2.54	1	2.54	1	2.54	1	2.54
<b>Standard Level from Bottom of Storage Tank</b>										
	(in.)	(cm.)	(in.)	(cm.)	(in.)	(cm.)	(in.)	(cm.)	(in.)	(cm.)
Overflow	54	137.16	60	152.4	66	167.64	72	182.88	78	190.50
High Level	49	124.46	55	139.7	61	154.94	67	170.18	73	187.96
Head Seam	19.6	43.18	19.6	43.18	19.6	43.18	19.6	43.18	19.6	43.18
	(gallons)	(liters)	(gallons)	(liters)	(gallons)	(liters)	(gallons)	(liters)	(gallons)	(liters)
Overflow	836	3164	941	3562	1048	3967	1154	4368	1259	4765
High Level	748	2831	854	3232	960	3634	1065	4031	1171	4432
Head Seam	230	871	230	871	230	871	230	871	230	871